

VÁLVULAS DE VENTILACIÓN

BREATHER VALVES

VÁLVULAS DE FUNDICIÓN

Fabricadas durante cuarenta años, el rango de válvulas de ventilación con cuerpo de aluminio ha alcanzado un alto nivel de seguridad y funcionamiento. Suministradas con sellado excelente conseguido mediante una progresiva reducción de los límites aceptable por nuestro laboratorio de pruebas.

Partes internas en acero inoxidable (asientos, clapetas guías, tornillos y mallas) dentro de un sólido cuerpo de fundición de aluminio, este tipo de válvulas son válidas para el proceso de muchos tipos de fluidos, de hecho, el oxígeno del aire forma en la superficie del aluminio una capa de óxido de aluminio que aumenta su resistencia a la corrosión, este proceso se llama auto-pasivación y también es común en el acero y el acero inoxidable. Obviamente el aluminio no se puede instalar con ácidos o soluciones básicas fuertes, de todas maneras, el aluminio ofrece resultados muy satisfactorios con todos los hidrocarburos más comunes como la gasolina y el gasoil, con casi todos los disolventes, alcoholes, tratamiento de plantas depuradoras (biogás). Nosotros hemos llevamos a cabo el mantenimiento en válvulas instaladas durante 20 años y hemos comprobado que el espesor de la pared no se ha reducido significativamente gracias a la pintura epoxi que damos en la parte exterior.

Estas válvulas se suministran con bridas de 2" a 12" ASA150Lbs FF y de DN50 a DN300 PN10.

Tarado: en presión entre +22 y +1000 mmH₂O y en vacío entre -22 y 500 mmH₂O. Otros tarados consultar.

CAST VALVES

Manufactured for forty years, the range of aluminium bodied breather valves reached a high level of reliability and performance. Provided with a premium tightness got through progressive decrease of acceptance limits in our tightness test procedures. With stainless steel inner parts (seats, discs, guides, screws and screens) housed in a solid casted aluminium body, this kind of valves is suitable for a lot of process fluid; in fact the oxygen contained in the air forms on aluminium surfaces an aluminium-oxide layer that increases corrosion resistance ; this process is called auto-passivation and it is common to stainless steel as well . Obviously aluminium cannot be installed with acids or basic strong solutions, however aluminium gives satisfactory results with common hydrocarbons like petrol and diesel oil, with most of solvents , with alcohols , in waste water gas treatment (biogas) : we carried out maintenance on valves installed for twenty years and found that body thickness had not significative reduction even thanks to epoxidic painting we provide on external surfaces .

This range of valves is supplied with flanges from 2" up to 12" ANSI 150FF. From DN50 up to DN300 PN10.

Setting: pressure from +22 up to +1000 mmH₂O, vacuum from -22 up to -500 mmH₂O. Other settings upon request.

Ejemplos de válvula de aluminio / Examples of aluminium valves:

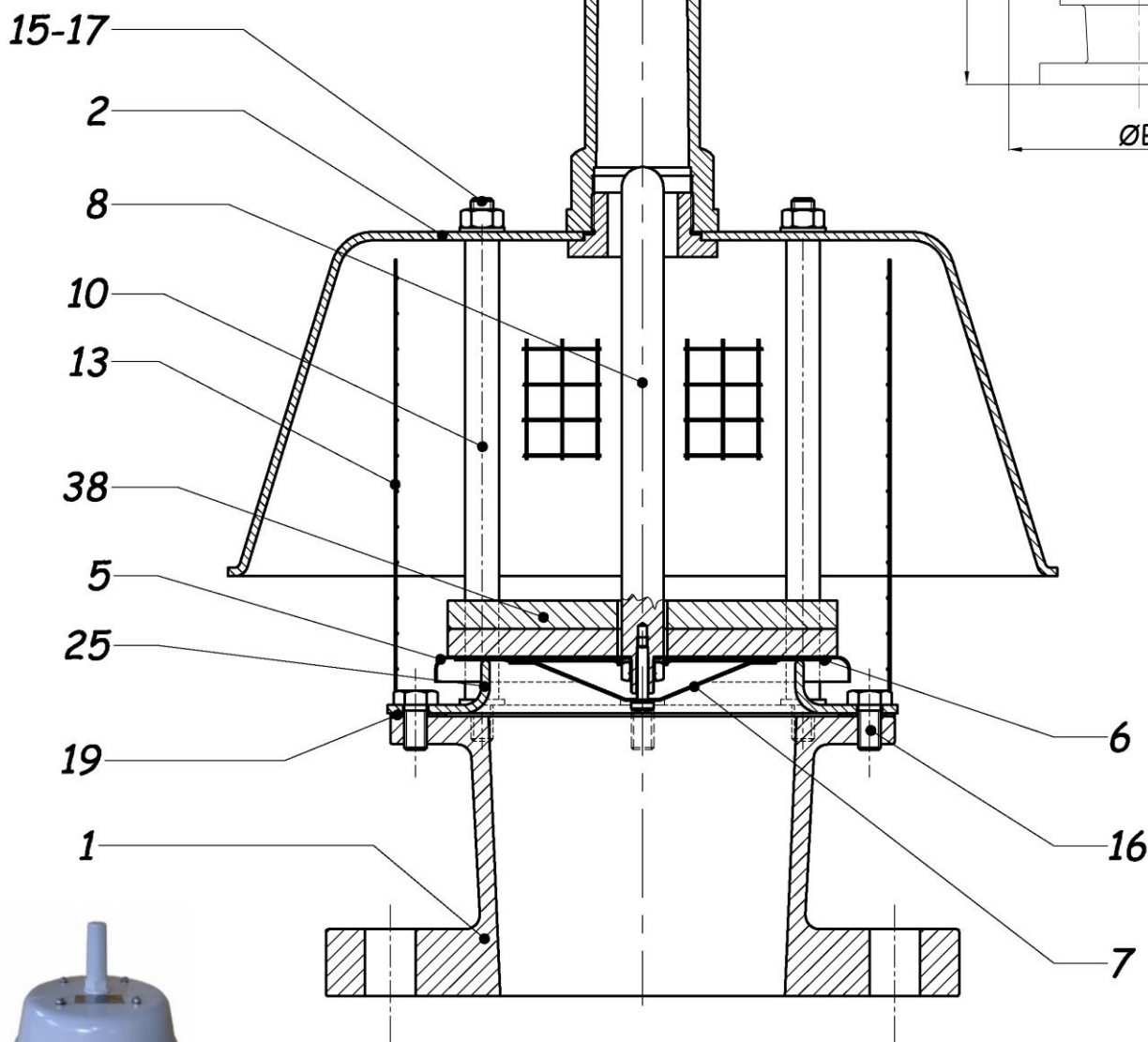
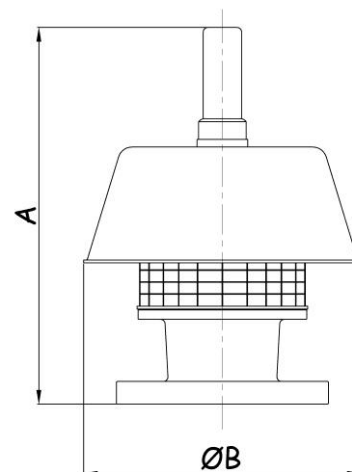
Mod. 54



Mod. 92



| TAMAÑO SIZE | A | B |
|-------------|-----|-----|
| DN | mm | mm |
| 2" | 250 | 230 |
| 3" | 310 | 250 |
| 4" | 365 | 325 |
| 6" | 448 | 408 |
| 8" | 500 | 485 |
| 10" | 560 | 578 |
| 12" | 600 | 652 |



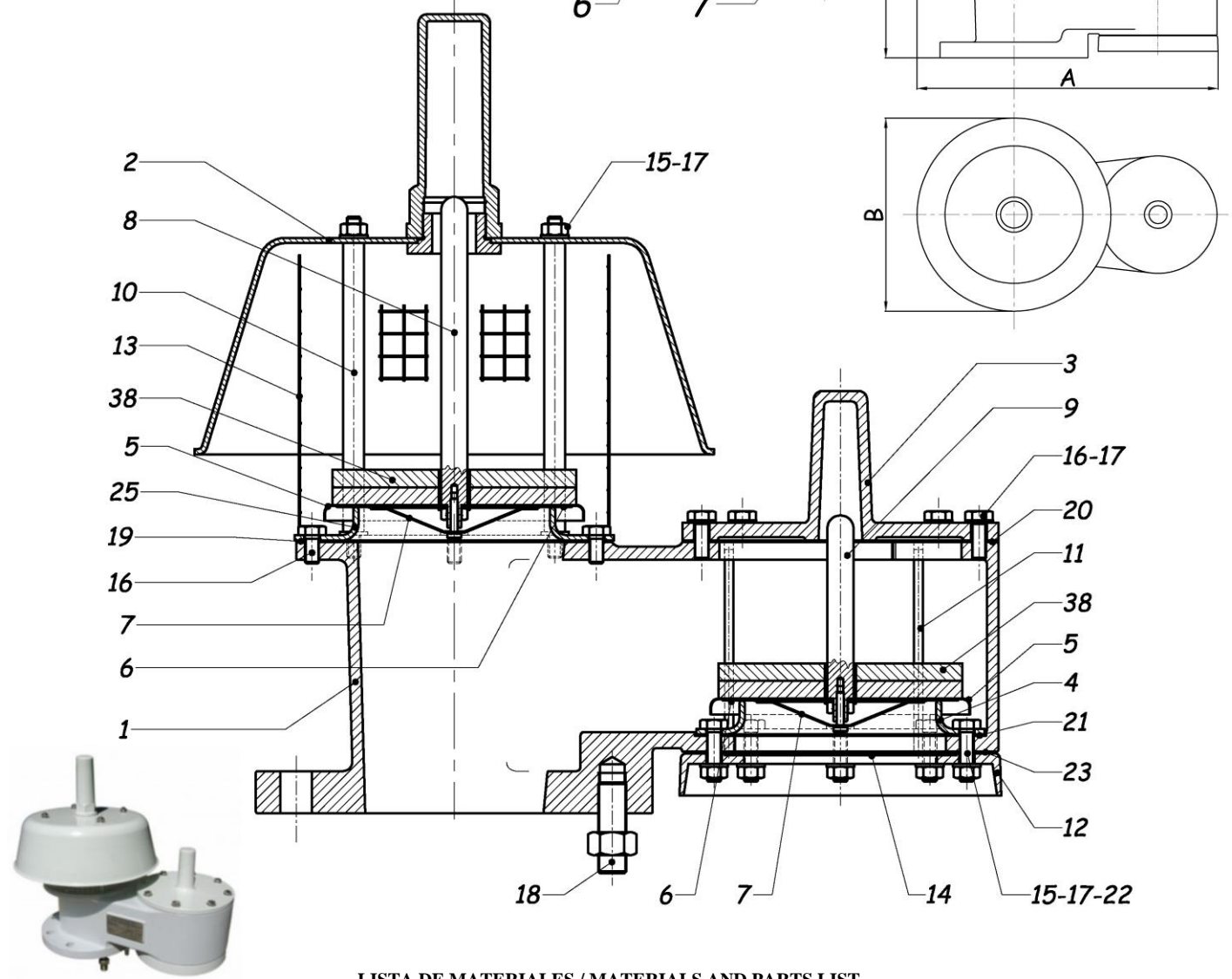
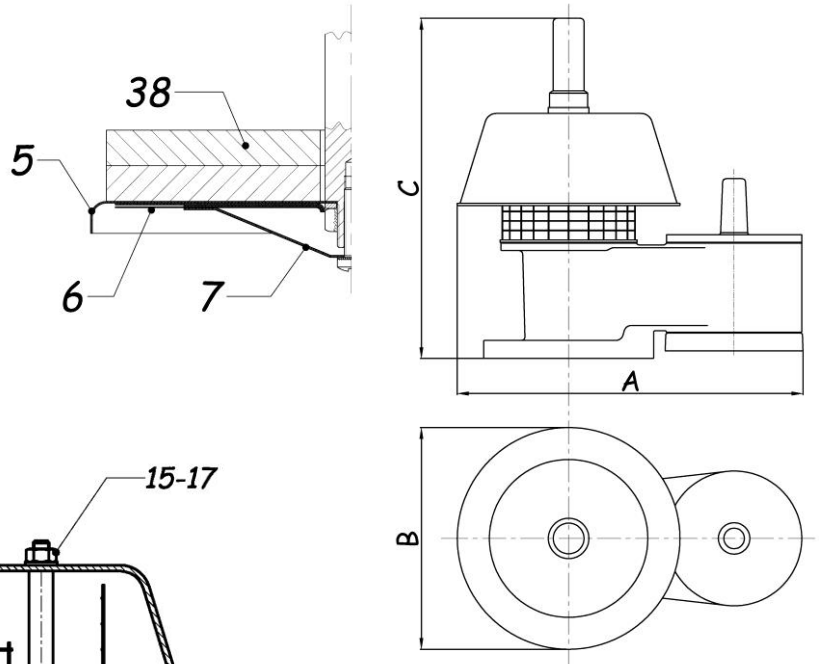
LISTA DE MATERIALES / MATERIALS AND PARTS LIST

| Nº NO. | DESCRIPCIÓN DESCRIPTION | MATERIAL MATERIALS |
|--------|-------------------------|--------------------|
| 1 | CUERPO BODY | ALUMINIO ALUMINIUM |
| 2 | CAPERUZA PRESSURE HOOD | ALUMINIO ALUMINIUM |
| 5 | CLAPETA PALLET | AISI 316 |
| 6 | DIAFRAGMA DIAPHRAGM | F.E.P. + P.T.F.E. |
| 7 | DEFLECTOR DEFLECTOR | AISI 316 |

| Nº NO. | DESCRIPCIÓN DESCRIPTION | MATERIAL MATERIALS |
|--------|--------------------------------|--------------------|
| 8 | VÁSTAGO PRESIÓN PRESSURE STEM | ALUMINIO ALUMINIUM |
| 10 | GUIA PRESIÓN PRESSURE GUIDE | AISI 304 |
| 13 | MALLA PRESIÓN PRESSURE SCREEN | AISI 304 |
| 15 | TUERCA HEXAGONAL HEXAGONAL NUT | AISI 304 |
| 16 | TORNILLO SCREW | AISI 304 |

| Nº NO. | DESCRIPCIÓN DESCRIPTION | MATERIAL MATERIALS |
|--------|-------------------------------|--------------------|
| 17 | ARANDELA WASHER | AISI 304 |
| 19 | JUNTA GASKET | FLEXOID |
| 25 | ASIENTO PRESIÓN PRESSURE SEAT | AISI 304 |
| 38 | CONTRAPESOS LOADING WEIGHTS | PLOMO LEAD |

| TAMAÑO SIZE | A | B | C | PESO WEIGHT |
|----------------|------|-----|-----|----------------|
| DN | mm | mm | mm | kg |
| 2" | 350 | 230 | 295 | 8 |
| 3" | 395 | 250 | 355 | 12 |
| 4" | 475 | 325 | 410 | 15 |
| 6" | 627 | 408 | 510 | 25 |
| 8" | 744 | 485 | 570 | 42 |
| 10" | 876 | 578 | 650 | 43 |
| 12" | 1005 | 652 | 745 | 76 |



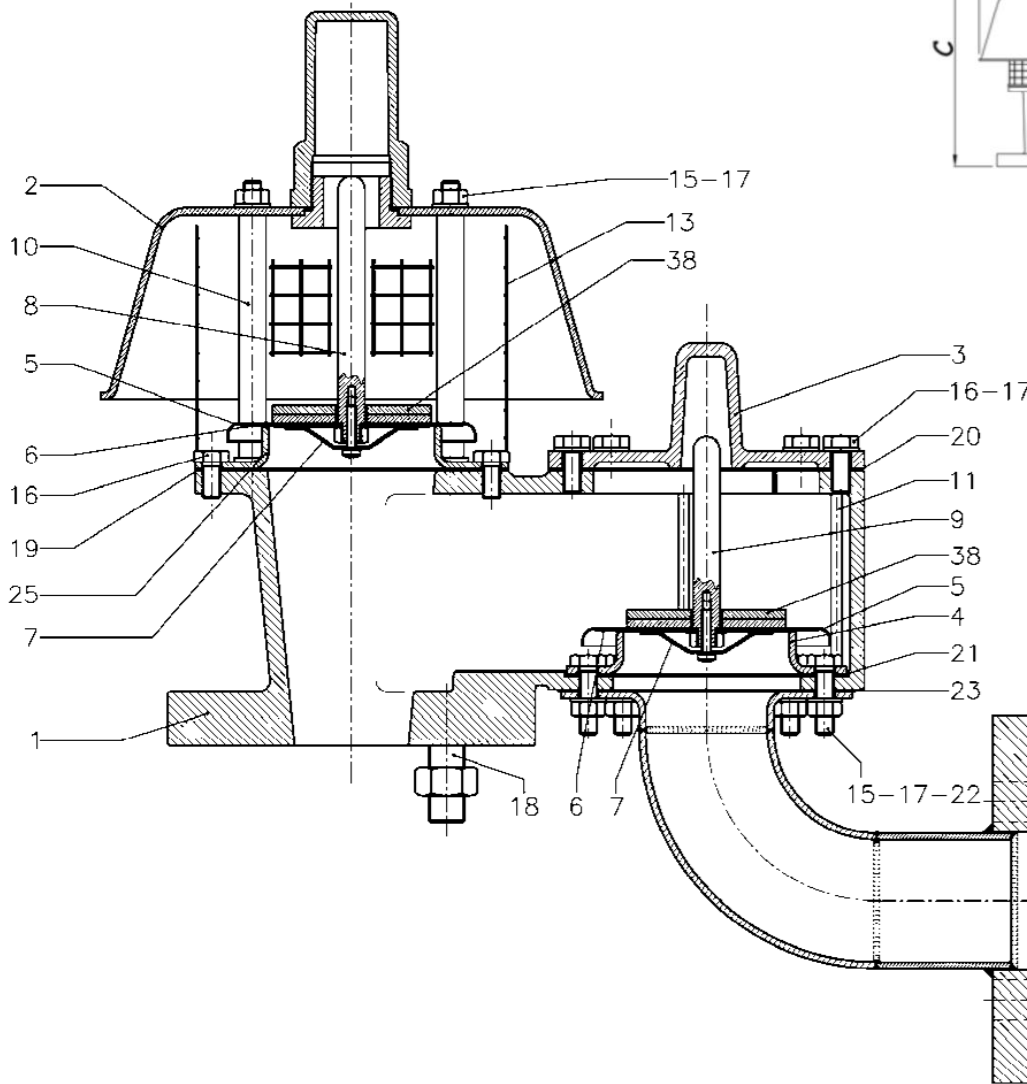
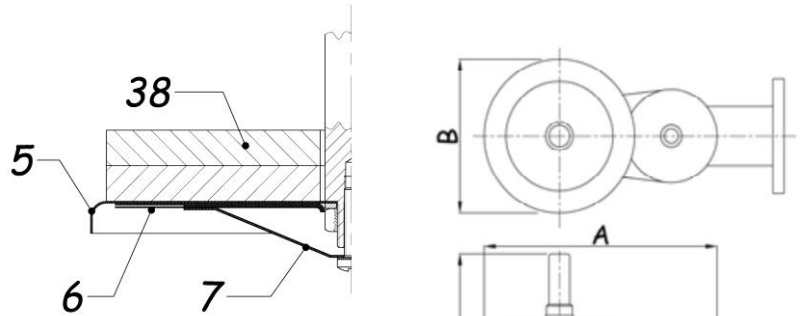
LISTA DE MATERIALES / MATERIALS AND PARTS LIST

| N° NO. | DESCRIPCIÓN DESCRIPTION | MATERIAL MATERIALS |
|--------|--------------------------------|--------------------|
| 1 | CUERPO BODY | ALUMINIO ALUMINIUM |
| 2 | CAPERUZA PRESIÓN PRESSURE HOOD | ALUMINIO ALUMINIUM |
| 3 | TAPA VACÍO VACUUM COVER | ALUMINIO ALUMINIUM |
| 4 | ASIENTO VACÍO VACUUM SEAT | AISI 304 |
| 5 | CLAPETA PALLET | AISI 316 |
| 6 | DIAFRAGMA DIAPHRAGM | P.T.F.E. + F.E.P. |
| 7 | DEFLECTOR DEFLECTOR | AISI 316 |
| 8 | VÁSTAGO PRESIÓN PRESSURE STEM | ALUMINIO ALUMINIUM |
| 9 | VÁSTAGO VACÍO VACUUM STEM | ALUMINIO ALUMINIUM |

| N° NO. | DESCRIPCIÓN DESCRIPTION | MATERIAL MATERIALS |
|--------|----------------------------------|--------------------|
| 10 | GUÍA PRESIÓN PRESSURE GUIDE | AISI 304 |
| 11 | GUÍA VACÍO VACUUM GUIDE | AISI 304 |
| 12 | VIERTEAGUAS WATER DRIP | ALUMINIO ALUMINIUM |
| 13 | MALLA DE PRESIÓN PRESSURE SCREEN | AISI 304 |
| 14 | MALLA DE VACÍO VACUUM SCREEN | AISI 304 |
| 15 | TUERCA HEXAGONAL HEXAGONAL NUT | AISI 304 |
| 16 | TORNILLO SCREW | AISI 304 |
| 17 | ARANDELA WASHER | AISI 304 |
| 18 | EJE ROSCADO STUD BOLT | AISI 304 |

| N° NO. | DESCRIPCIÓN DESCRIPTION | MATERIAL MATERIALS |
|--------|-------------------------------|--------------------|
| 19 | JUNTA GASKET | FLEXOID |
| 20 | JUNTA GASKET | FLEXOID |
| 21 | JUNTA GASKET | FLEXOID |
| 22 | TORNILLO SCREW | AISI 304 |
| 23 | JUNTA GASKET | FLEXOID |
| 25 | ASINETO PRESIÓN PRESSURE SEAT | AISI 304 |
| 38 | CONTRAPESOS LOADING WEIGHTS | PLOMO LEAD |

| TAMAÑO SIZE | A | B | C | PESO WEIGHT |
|----------------|------|-----|-----|----------------|
| DN | mm | mm | mm | kg |
| 2" | 350 | 230 | 295 | |
| 3" | 395 | 250 | 355 | |
| 4" | 475 | 325 | 410 | |
| 6" | 627 | 408 | 510 | |
| 8" | 744 | 485 | 570 | |
| 10" | 876 | 578 | 650 | |
| 12" | 1005 | 652 | 745 | |



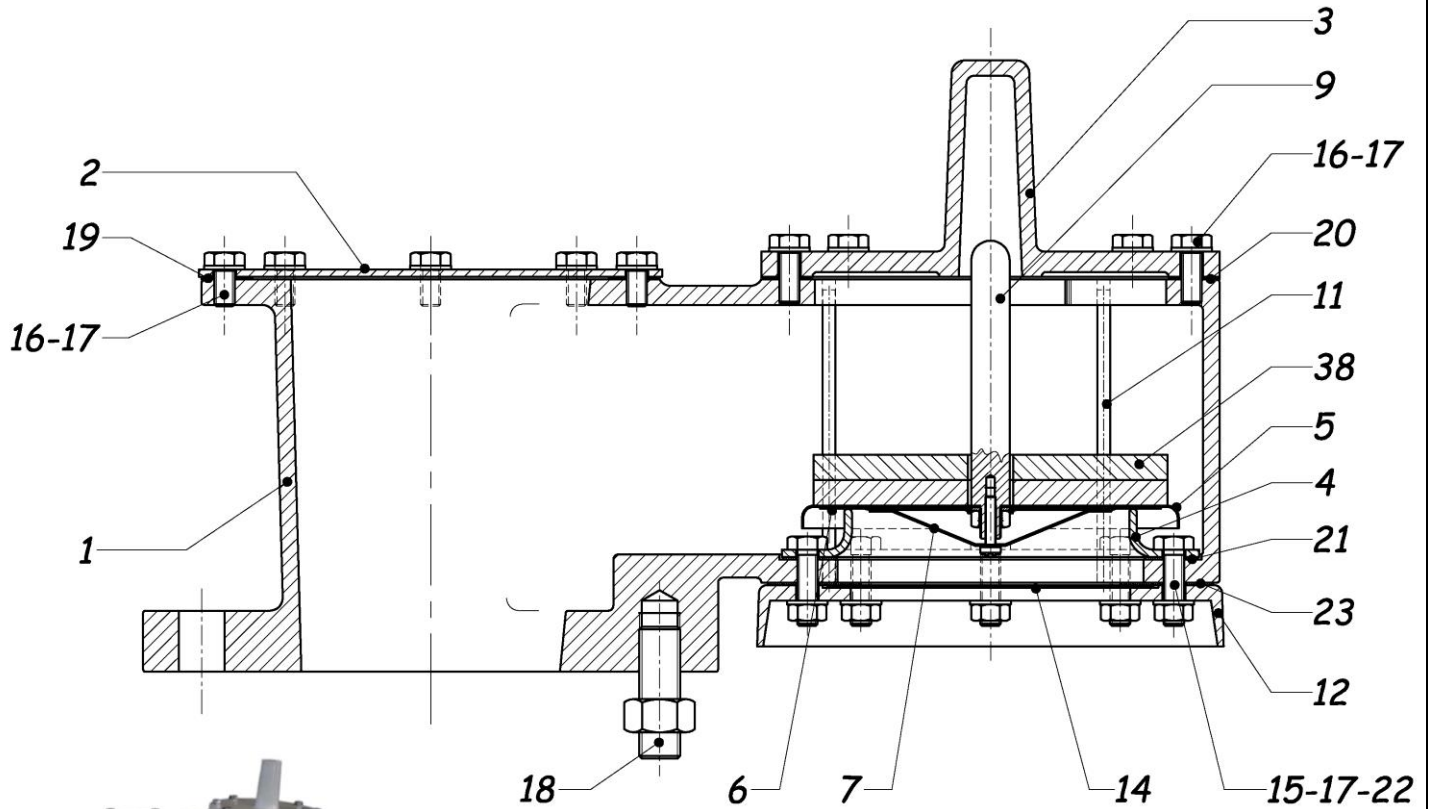
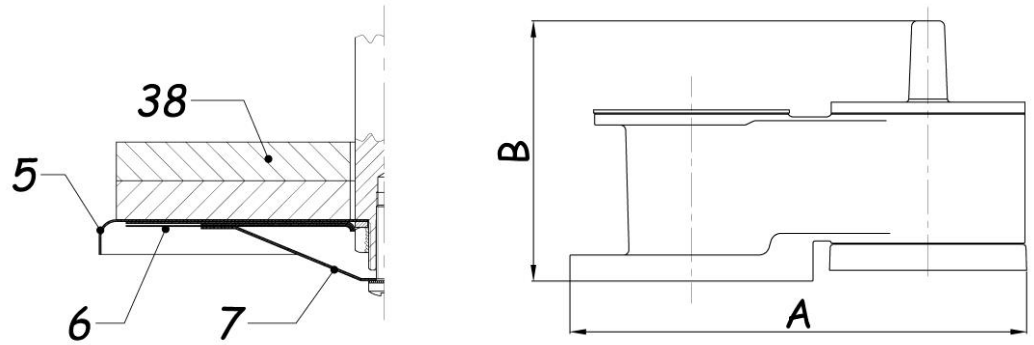
LISTA DE MATERIALES / MATERIALS AND PARTS LIST

| N° NO. | DESCRIPCIÓN DESCRIPTION | MATERIAL MATERIALS |
|--------|-----------------------------------|-----------------------|
| 1 | CUERPO BODY | ALUMINIO ALUMINIUM |
| 2 | CAPERUZA PRESIÓN PRESSURE HOOD | ALUMINIO ALUMINIUM |
| 3 | TAPA VACÍO VACUUM COVER | ALUMINIO ALUMINIUM |
| 4 | ASIENTO VACÍO VACUUM SEAT | AISI 304 |
| 5 | CLAPETA PALLET | AISI 316 |
| 6 | DIAFRAGMA DIAPHRAGM | P.T.F.E. + F.E.P. |
| 7 | DEFLECTOR DEFLECTOR | AISI 316 |
| 8 | VÁSTAGO PRESIÓN PRESSURE STEM | ALUMINIO ALUMINIUM |
| 9 | VÁSTAGO VACÍO VACUUM STEM | ALUMINIO ALUMINIUM |

| N° NO. | DESCRIPCIÓN DESCRIPTION | MATERIAL MATERIALS |
|--------|-------------------------------------|-----------------------|
| 10 | GUÍA PRESIÓN PRESSURE GUIDE | AISI 304 |
| 11 | GUÍA VACÍO VACUUM GUIDE | AISI 304 |
| 13 | MALLA DE PRESIÓN PRESSURE SCREEN | AISI 304 |
| 15 | TUERCA HEXAGONAL HEXAGONAL NUT | AISI 304 |
| 16 | TORNILLO SCREW | AISI 304 |
| 17 | ARANDELA WASHER | AISI 304 |
| 18 | EJE ROSCADO STUD BOLT | AISI 304 |

| N° NO. | DESCRIPCIÓN DESCRIPTION | MATERIAL MATERIALS |
|--------|----------------------------------|-----------------------|
| 19 | JUNTA GASKET | FLEXOID |
| 20 | JUNTA GASKET | FLEXOID |
| 21 | JUNTA GASKET | FLEXOID |
| 22 | TORNILLO SCREW | AISI 304 |
| 23 | JUNTA GASKET | FLEXOID |
| 25 | ASINETO PRESIÓN PRESSURE SEAT | AISI 304 |
| 38 | CONTRAPESOS LOADING WEIGHTS | PLOMO LEAD |

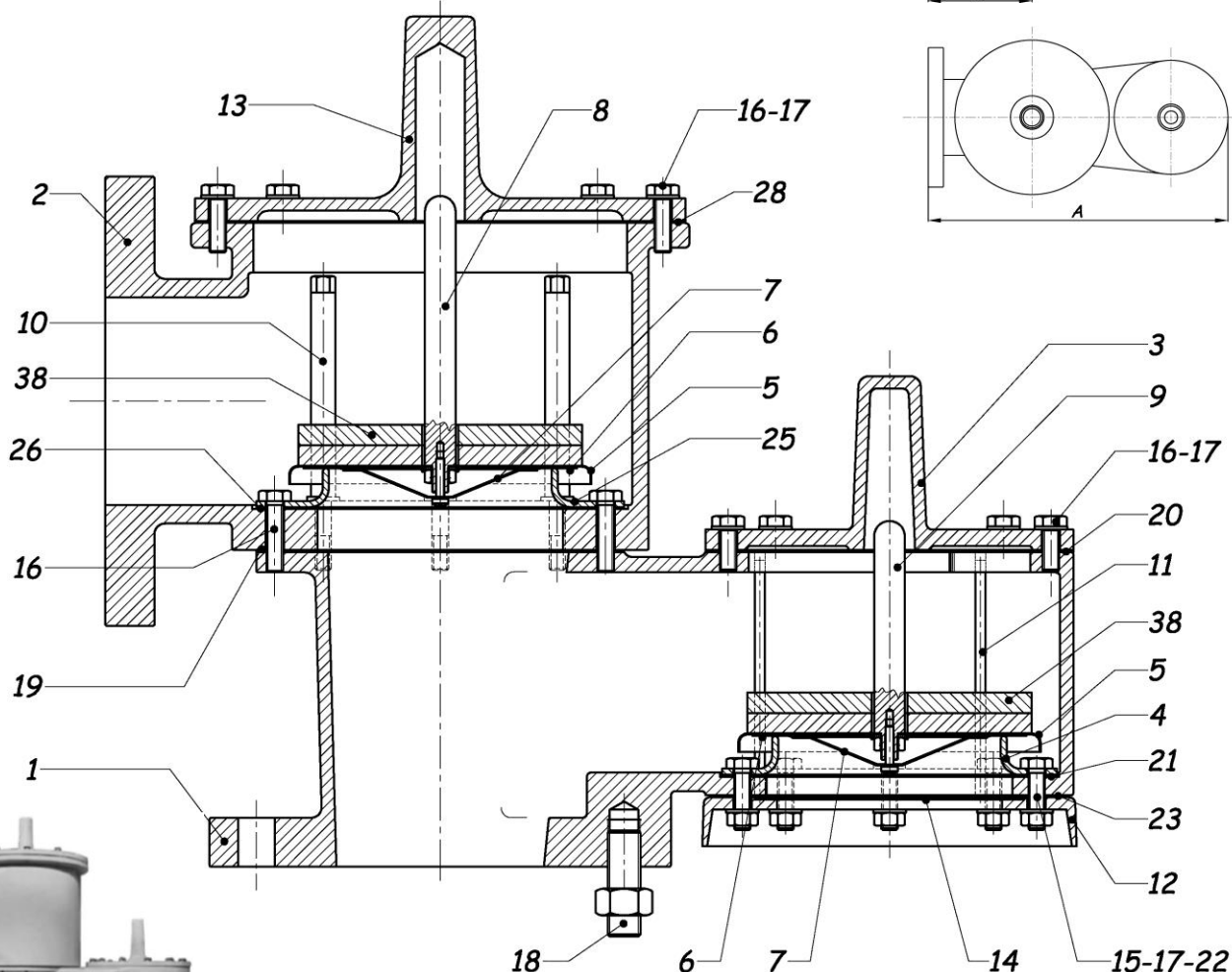
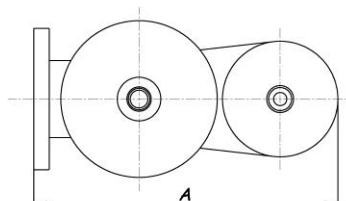
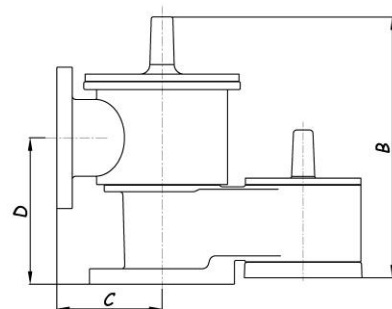
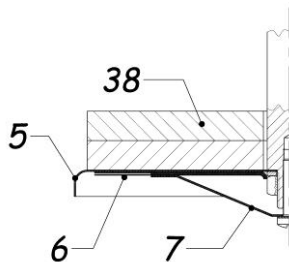
| TAMAÑO SIZE | A | B |
|----------------|-----|-----|
| DN | mm | mm |
| 2" | 315 | 180 |
| 3" | 370 | 215 |
| 4" | 425 | 245 |
| 6" | 550 | 295 |
| 8" | 670 | 360 |
| 10" | 790 | 440 |
| 12" | 920 | 510 |



LISTADE MATERIALES / MATERIALS AND PARTS LIST

| Nº NO. | DESCRIPCIÓN DESCRIPTION | MATERIAL MATERIALS | Nº NO. | DESCRIPCIÓN DESCRIPTION | MATERIAL MATERIALS | Nº NO. | DESCRIPCIÓN DESCRIPTION | MATERIAL MATERIALS |
|--------|---------------------------|--------------------|--------|--------------------------------|--------------------|--------|-----------------------------|--------------------|
| 1 | CUERPO BODY | ALUMINIO ALUMINIUM | 9 | VÁSTAGO VACÍO VACUUM STEM | ALUMINIO ALUMINIUM | 18 | EJE ROSCADO STUD BOLT | AISI 304 |
| 2 | TAPA COVER | AISI 304 | 11 | GUIA VACÍO VACUUM GUIDE | AISI 304 | 19 | JUNTA GASKET | FLEXOID |
| 3 | TAPA VACÍO VACUUM COVER | ALUMINIO ALUMINIUM | 12 | VIERTEGUAS WATER DRIP | ALUMINIO ALUMINIUM | 20 | JUNTA GASKET | FLEXOID |
| 4 | ASIENTO VACÍO VACUUM SEAT | AISI 304 | 14 | MALLA VACÍO VACUUM SCREEN | AISI 304 | 21 | JUNTA GASKET | FLEXOID |
| 5 | CLAPETA PALLET | AISI 316 | 15 | TUERCA HEXAGONAL HEXAGONAL NUT | AISI 304 | 22 | TORNILLO SCREW | AISI 304 |
| 6 | DIAFRAGMA DIAPHRAGM | PTFE + FEP | 16 | TORNILLO SCREW | AISI 304 | 23 | JUNTA GASKET | FLEXOID |
| 7 | DEFLECTOR DEFLECTOR | AISI 316 | 17 | ARANDELA WASHER | AISI 304 | 38 | CONTRAPESOS LOADING WEIGHTS | PLOMO LEAD |

| TAMAÑO SIZE | A | B | C | D |
|----------------|-----|-----|-----|-----|
| DN | mm | mm | mm | mm |
| 2" | 360 | 290 | 130 | 177 |
| 3" | 415 | 352 | 145 | 200 |
| 4" | 470 | 416 | 160 | 231 |
| 6" | 625 | 520 | 220 | 280 |
| 8" | 745 | 632 | 250 | 348 |
| 10" | 875 | 773 | 290 | 417 |
| 12" | 993 | 900 | 320 | 512 |



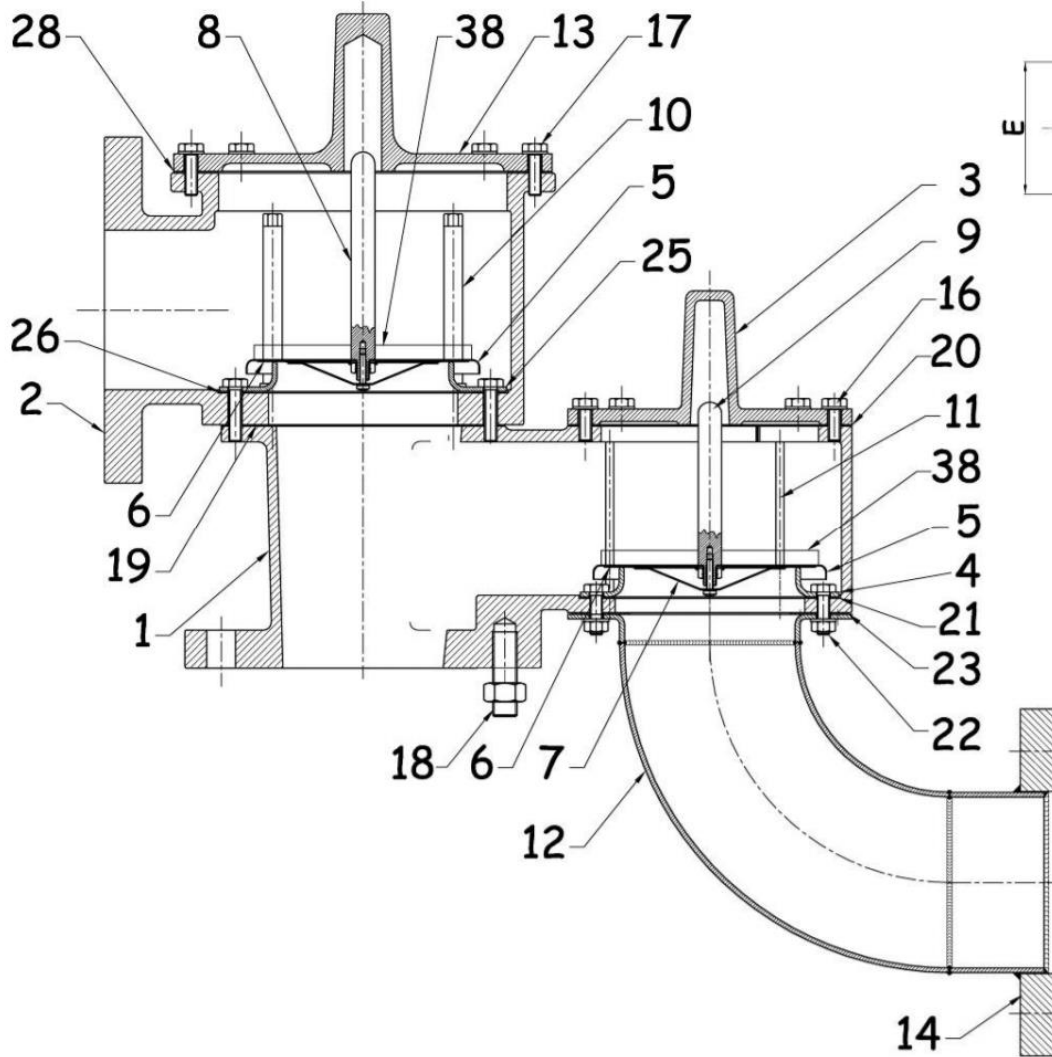
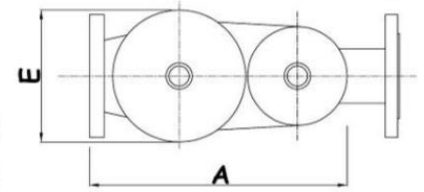
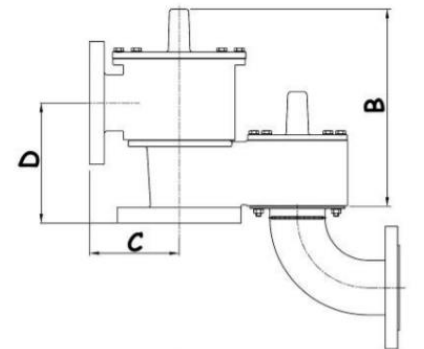
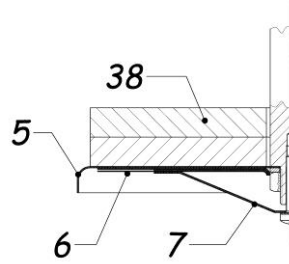
LISTA DE MATERIALES / MATERIALS AND PARTS LIST

| N° NO. | DESCRIPCIÓN DESCRIPTION | MATERIAL MATERIALS |
|--------|---|--------------------|
| 1 | CUERPO BODY | ALUMINIO ALUMINIUM |
| 2 | CONDUCCIÓN DE PRESIÓN PRESSURE CONVEYOR | ALUMINIO ALUMINIUM |
| 3 | TAPA DE VACÍO VACUUM COVER | ALUMINIO ALUMINIUM |
| 4 | ASIENTO PRESIÓN VACUUM SEAT | AISI 304 |
| 5 | CLAPETA PALLET | AISI 316 |
| 6 | DIAFRAGMA DIAPHRAGM | P.T.F.E. + F.E.P. |
| 7 | DEFLECTOR DEFLECTOR | AISI 316 |
| 8 | VÁSTAGO PRESIÓN PRESSURE STEM | ALUMINIO ALUMINIUM |
| 9 | VÁSTAGO VACÍO VACUUM STEM | ALUMINIO ALUMINIUM |

| N° NO. | DESCRIPCIÓN DESCRIPTION | MATERIAL MATERIALS |
|--------|-------------------------------|--------------------|
| 10 | GUIA PRESIÓN PRESSURE GUIDE | AISI 304 |
| 11 | GUIA VACÍO VACUUM GUIDE | AISI 304 |
| 12 | VIERTEAGUAS WATER DRIP | ALUMINIO ALUMINIUM |
| 13 | TAPA PRESIÓN PRESSURE COVER | ALUMINIO ALUMINIUM |
| 14 | MALLA VACÍO VACUUM SCREEN | AISI 304 |
| 15 | TUERCA HEXAGONAL EXAGONAL NUT | AISI 304 |
| 16 | TORNILLO SCREW | AISI 304 |
| 17 | ARANDELA WASHER | AISI 304 |
| 18 | EJE ROSCADO STUD BOLT | AISI 304 |

| N° NO. | DESCRIPCIÓN DESCRIPTION | MATERIAL MATERIALS |
|--------|-------------------------------|--------------------|
| 19 | JUNTA GASKET | FLEXOID |
| 20 | JUNTA GASKET | FLEXOID |
| 21 | JUNTA GASKET | FLEXOID |
| 22 | TORNILLO SCREW | AISI 304 |
| 23 | JUNTA GASKET | FLEXOID |
| 25 | ASIENTO PRESIÓN PRESSURE SEAT | AISI 304 |
| 26 | JUNTA GASKET | FLEXOID |
| 28 | JUNTA GASKET | FLEXOID |
| 38 | CONTRAPESOS LOADING WEIGHTS | PLOMO LEAD |

| TAMAÑO SIZE | A | B | C | D | E |
|----------------|-----|-----|-----|-----|-----|
| DN | mm | mm | mm | mm | mm |
| 2" | 360 | 290 | 130 | 177 | 195 |
| 3" | 415 | 352 | 145 | 200 | 215 |
| 4" | 470 | 416 | 160 | 231 | 240 |
| 6" | 625 | 520 | 220 | 280 | 312 |
| 8" | 745 | 632 | 250 | 348 | 375 |
| 10" | 875 | 773 | 290 | 417 | 428 |
| 12" | 993 | 900 | 320 | 512 | 490 |



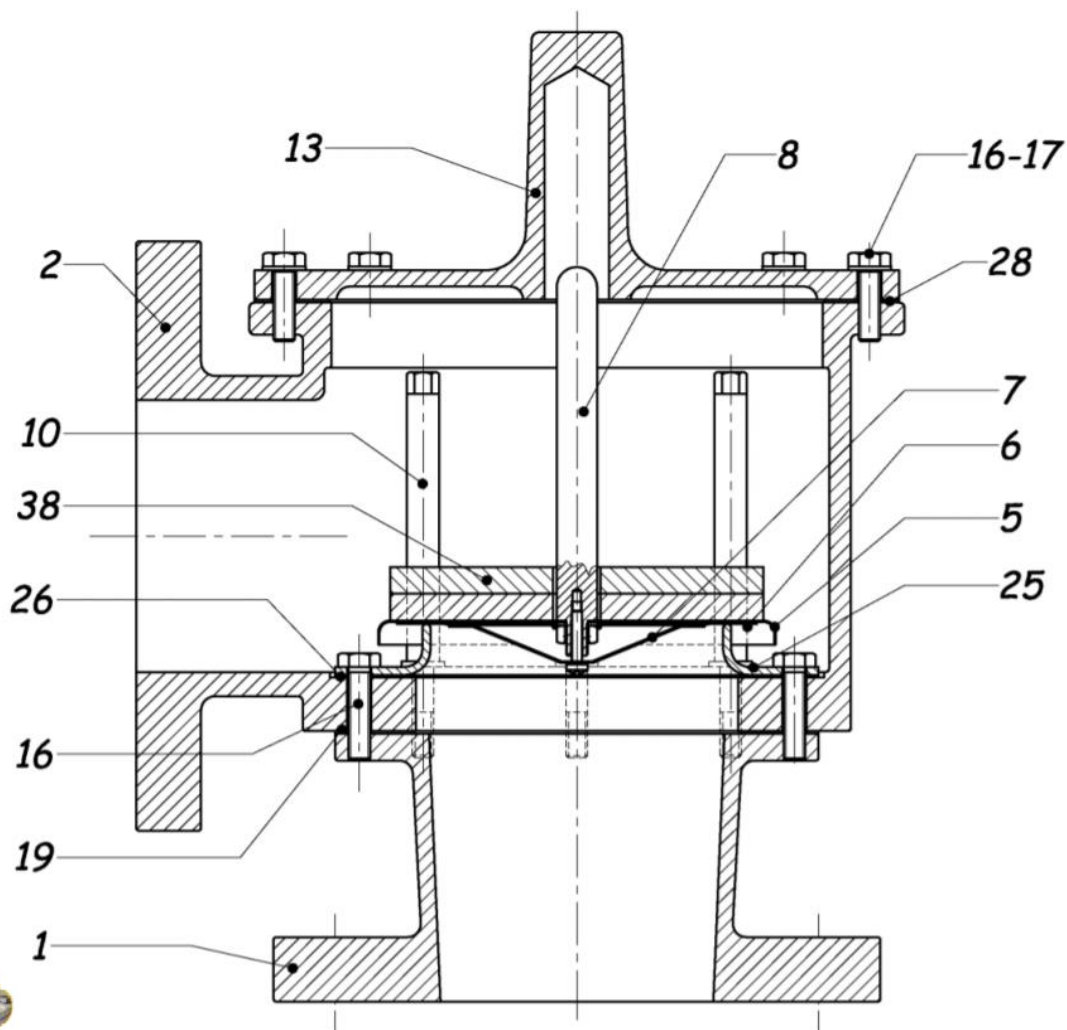
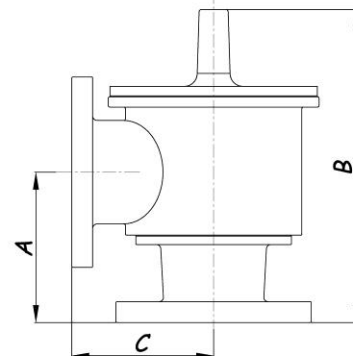
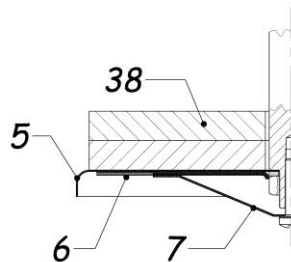
LISTA DE MATERIALES / MATERIALS AND PARTS LIST

| N° NO. | DESCRIPCIÓN DESCRIPTION | MATERIAL MATERIALS |
|--------|---|-----------------------|
| 1 | CUERPO BODY | ALUMINIO ALUMINIUM |
| 2 | CONDUCCIÓN DE PRESIÓN PRESSURE CONVEYOR | ALUMINIO ALUMINIUM |
| 3 | TAPA DE VACÍO VACUUM COVER | ALUMINIO ALUMINIUM |
| 4 | ASIENTO PRESIÓN VACUUM SEAT | AISI 316L |
| 5 | CLAPETA PALLET | AISI 316 |
| 6 | DIAPHRAGMA DIAPHRAGM | P.T.F.E. + F.E.P. |
| 7 | DEFLECTOR DEFLECTOR | AISI 316 |
| 8 | VÁSTAGO PRESIÓN PRESSURE STEM | ALUMINIO ALUMINIUM |
| 9 | VÁSTAGO VACÍO VACUUM STEM | ALUMINIO ALUMINIUM |

| N° NO. | DESCRIPCIÓN DESCRIPTION | MATERIAL MATERIALS |
|--------|--------------------------------|----------------------------------|
| 10 | GUIA PRESIÓN PRESSURE GUIDE | AISI 304 |
| 11 | GUIA VACÍO VACUUM GUIDE | AISI 304 |
| 12 | CODO ELBOW | ACERO AL CARBONO CARBON STEEL |
| 13 | TAPA PRESIÓN PRESSURE COVER | ALUMINIO ALUMINIUM |
| 14 | BRIDA FLANGE | ACERO AL CARBONO CARBON STEEL |
| 16 | TORNILLO SCREW | AISI 304 |
| 17 | TORNILLO SCREW | AISI 304 |
| 18 | EJE ROSCADO STUD BOLT | AISI 304 |
| 19 | JUNTA GASKET | FLEXOID |

| N° NO. | DESCRIPCIÓN DESCRIPTION | MATERIAL MATERIALS |
|--------|----------------------------------|-----------------------|
| 20 | JUNTA GASKET | FLEXOID |
| 21 | JUNTA GASKET | FLEXOID |
| 22 | TORNILLO SCREW | AISI 304 |
| 23 | JUNTA GASKET | FLEXOID |
| 25 | ASIENTO PRESIÓN PRESSURE SEAT | AISI 316L |
| 26 | JUNTA GASKET | FLEXOID |
| 28 | JUNTA GASKET | FLEXOID |
| 38 | CONTRAPESOS LOADING WEIGHTS | PLOMO LEAD |

| TAMAÑO SIZE DN | A mm | B mm | C mm |
|----------------------|---------|---------|---------|
| 2" | 137 | 250 | 130 |
| 3" | 155 | 307 | 145 |
| 4" | 180 | 365 | 160 |
| 6" | 225 | 465 | 220 |
| 8" | 278 | 562 | 250 |
| 10" | 333 | 689 | 290 |
| 12" | 404 | 792 | 320 |



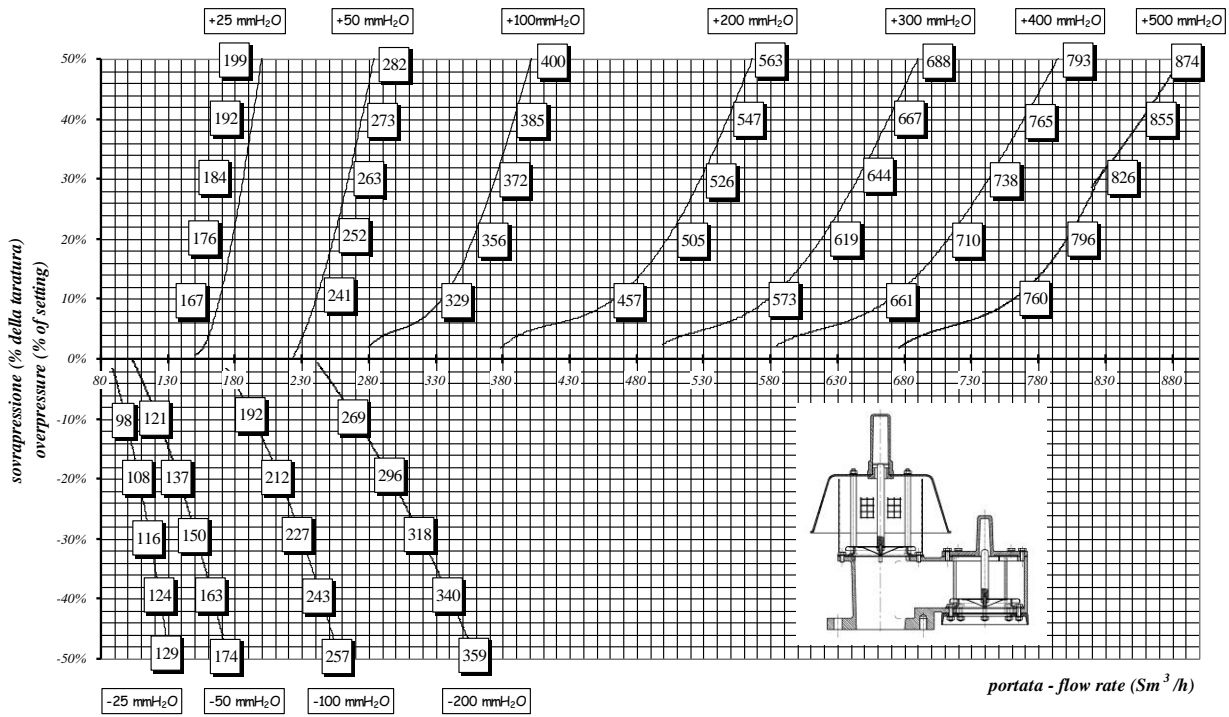
LISTA DE MATERIALES / MATERIALS AND PARTS LIST

| N° NO. | DESCRIPCIÓN DESCRIPTION | MATERIAL MATERIALS |
|--------|--------------------------------------|--------------------|
| 1 | CUERPO BODY | ALUMINIO ALUMINIUM |
| 2 | CONDUCCIÓN PRESIÓN PRESSURE CONVEYOR | ALUMINIO ALUMINIUM |
| 5 | CLAEPTA PALLET | AISI 316 |
| 6 | DIAFRAGMA DIAPHRAGM | F.E.P. + P.T.F.E. |
| 7 | DEFLECTOR DEFLECTOR | AISI 316 |

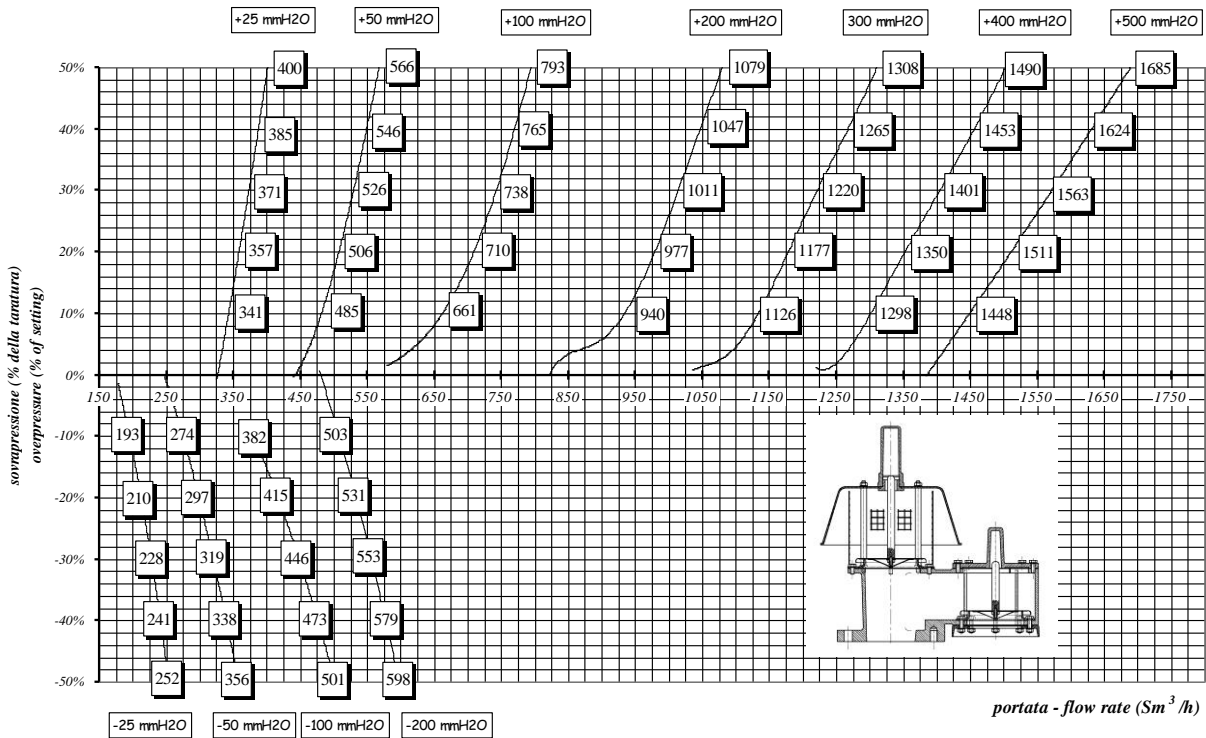
| N° NO. | DESCRIPCIÓN DESCRIPTION | MATERIAL MATERIALS |
|--------|----------------------------------|--------------------|
| 8 | VÁSTAGO DE PRESIÓN PRESSURE STEM | ALUMINIO ALUMINIUM |
| 10 | GUIA DE PRESIÓN PRESSURE GUIDE | AISI 304 |
| 13 | TAPA DE PRESIÓN PRESSURE COVER | ALUMINIO ALUMINIUM |
| 16 | TORNILLO SCREW | AISI 304 |
| 17 | ARANDELA WASHER | AISI 304 |

| N° NO. | DESCRIPCIÓN DESCRIPTION | MATERIAL MATERIALS |
|--------|----------------------------------|--------------------|
| 19 | JUNTA GASKET | FLEXOID |
| 25 | ASIENTO DE PRESIÓN PRESSURE SEAT | AISI 304 |
| 26 | JUNTA GASKET | FLEXOID |
| 28 | JUNTA GASKET | FLEXOID |
| 38 | CONTRAPESOS LOADING WEIGHTS | PLOMO LEAD |

VALVOLA / VALVE MOD. 54 - 2" (DN 50)



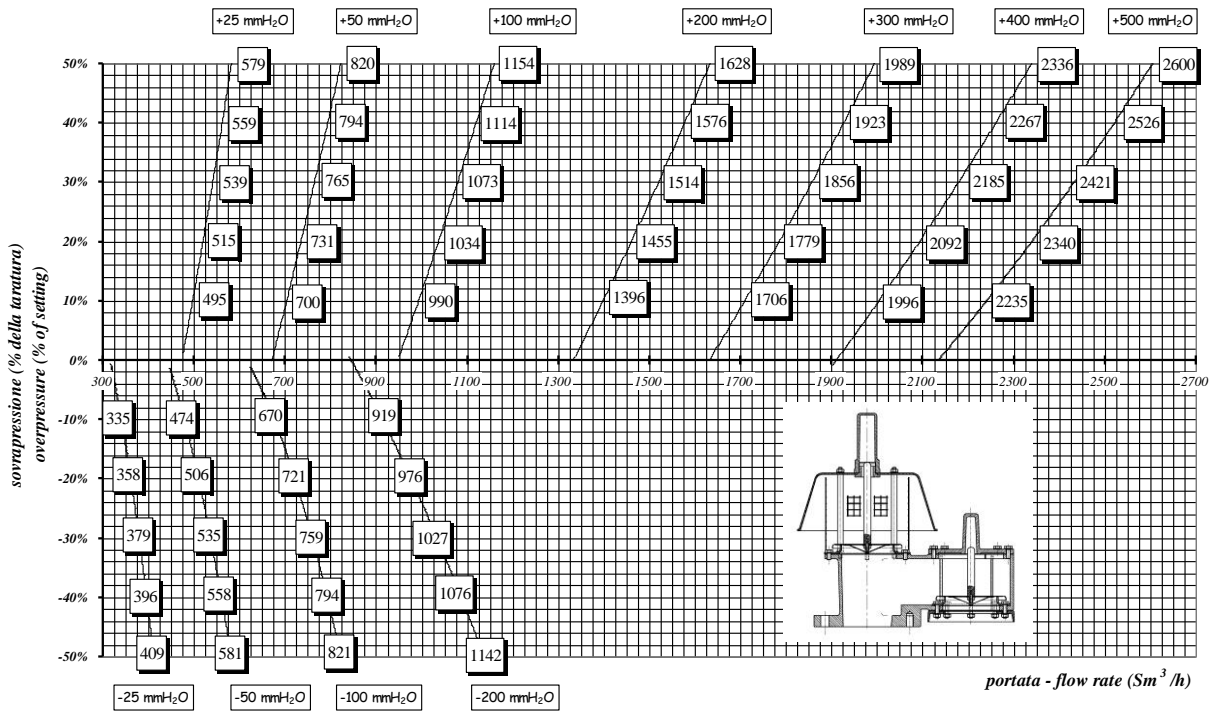
VALVOLA / VALVE MOD. 54 - 3" (DN 80)



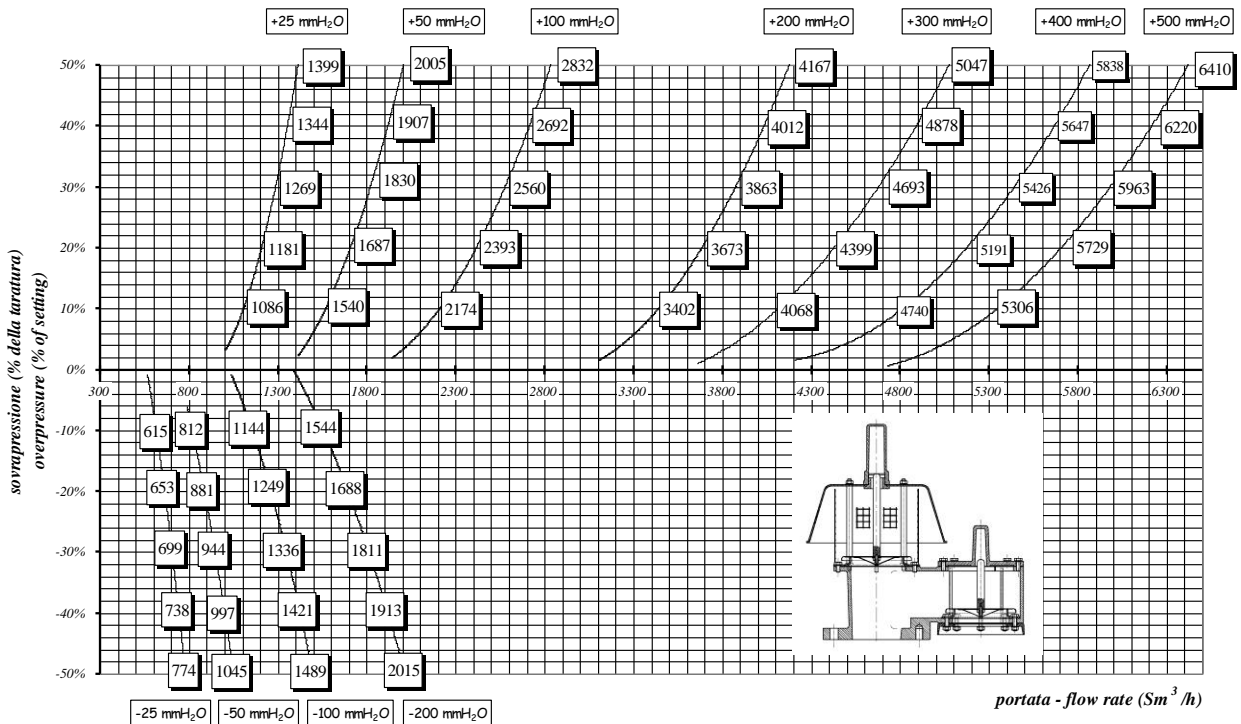
NOTA: 1) los caudales de presión son los mismos para el modelo 53;
2) los caudales de vacío son los mismos para el modelo 56.

NOTE: 1) pressure flow rates values are the same for model 53;
2) vacuum flow rates values are the same for model 56.

VALVOLA \ VALVE MOD. 54 - 4" (DN 100)

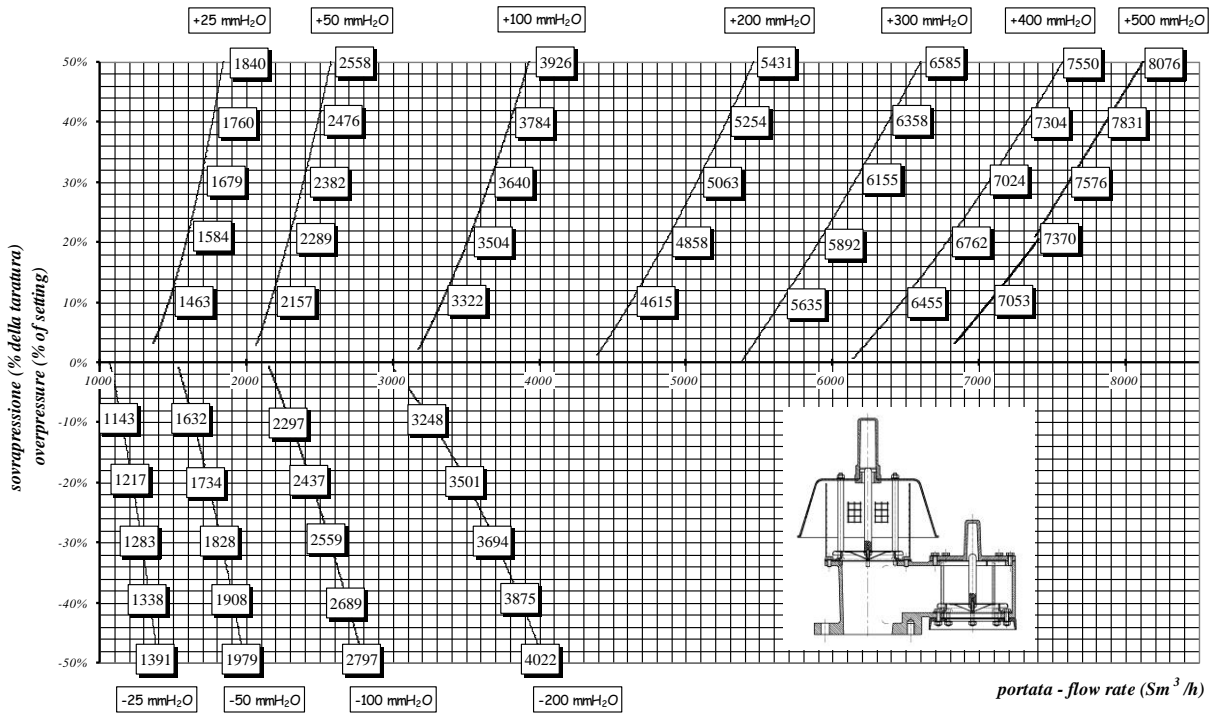


VALVOLA \ VALVE MOD. 54 - 6" (DN 150)

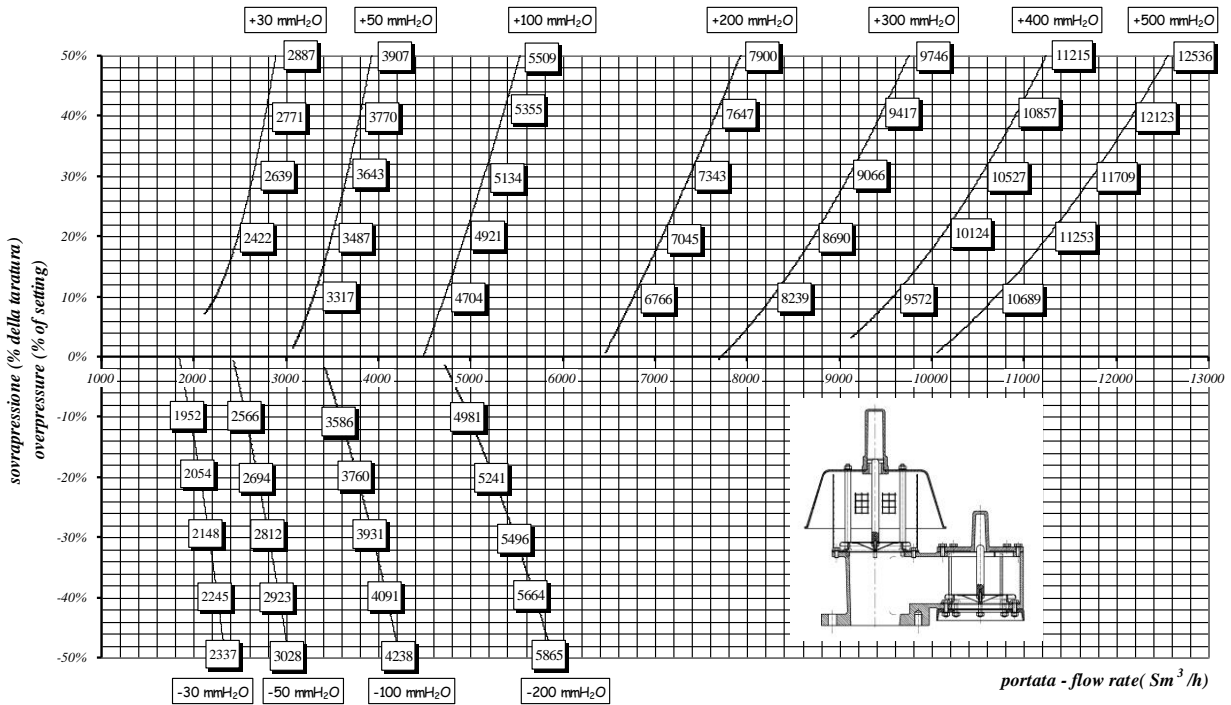


NOTA: 1) los caudales de presión son los mismos para el modelo 53;
 2) los caudales de vacío son los mismos para el modelo 56.
 NOTE: 1) pressure flow rates values are the same for model 53;
 2) vacuum flow rates values are the same for model 56.

VALVOLA \ VALVE MOD. 54 - 8" (DN 200)



VALVOLA \ VALVE MOD. 54 - 10" (DN 250)



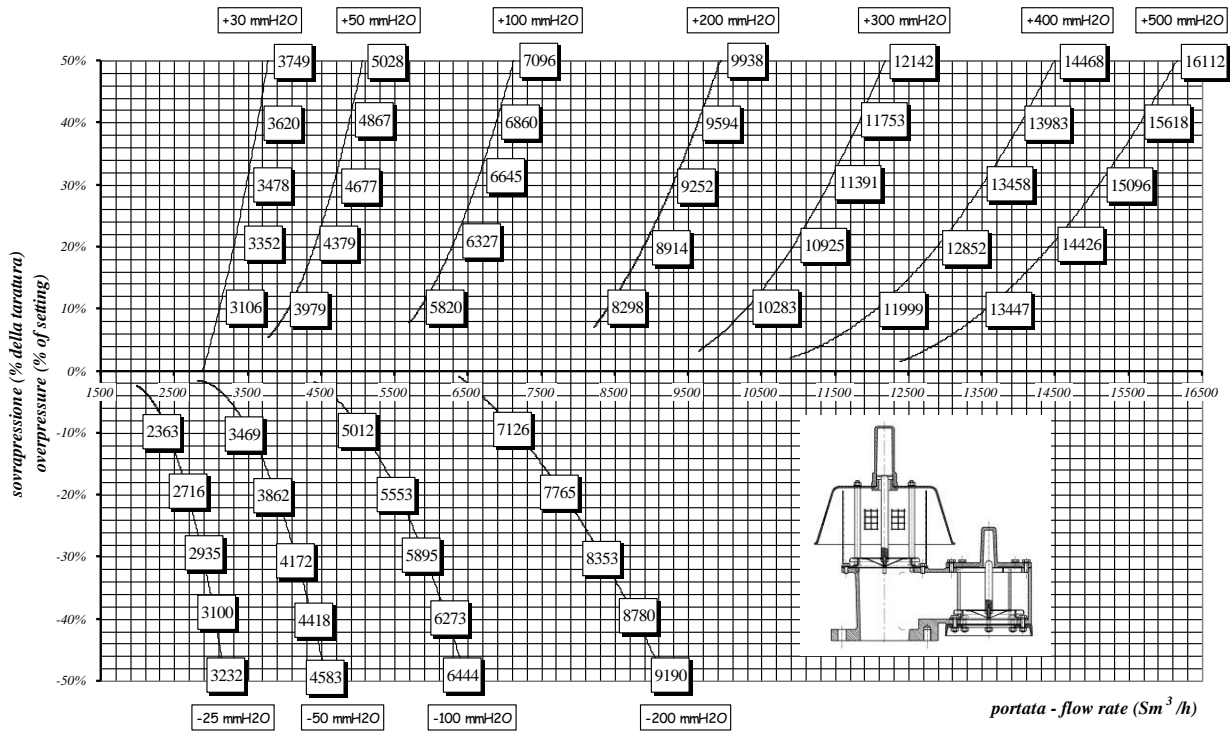
NOTA: 1) los caudales de presión son los mismos para el modelo 53;

2) los caudales de vacío son los mismos para el modelo 56.

NOTE: 1) pressure flow rates values are the same for model 53;

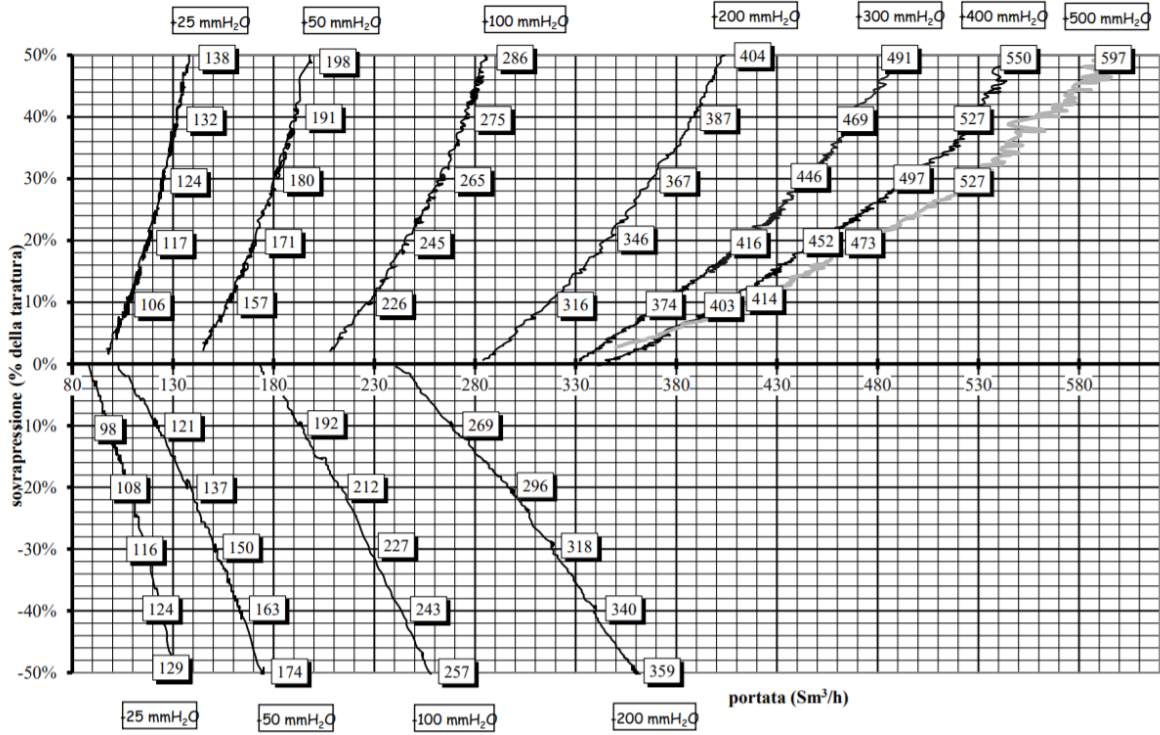
2) vacuum flow rates values are the same for model 56.

VALVOLA \ VALVE MOD. 54 - 12" (DN 300)

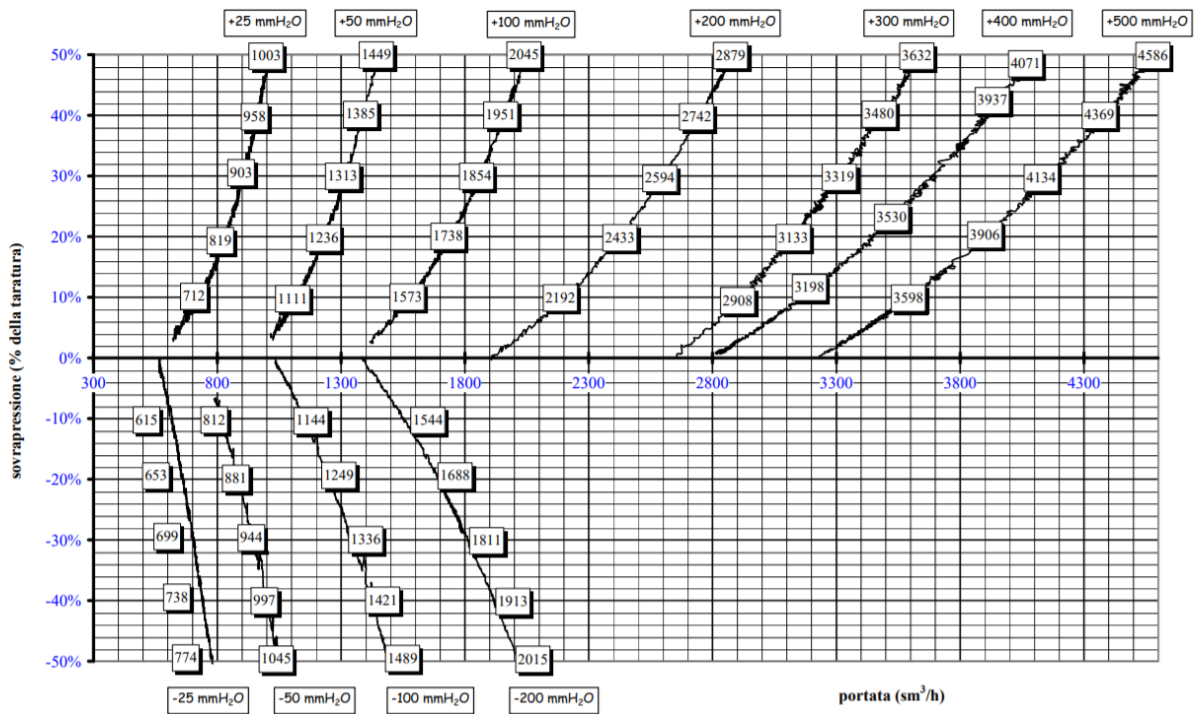


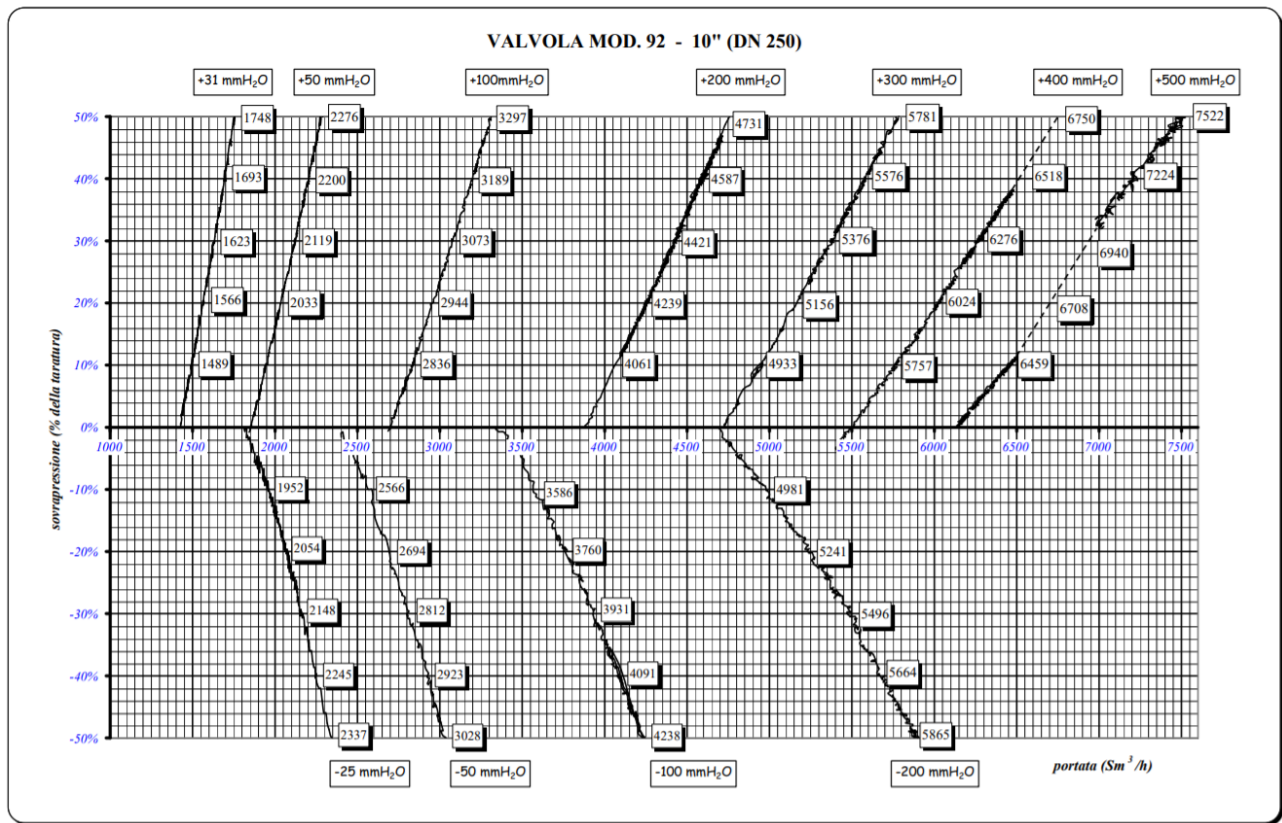
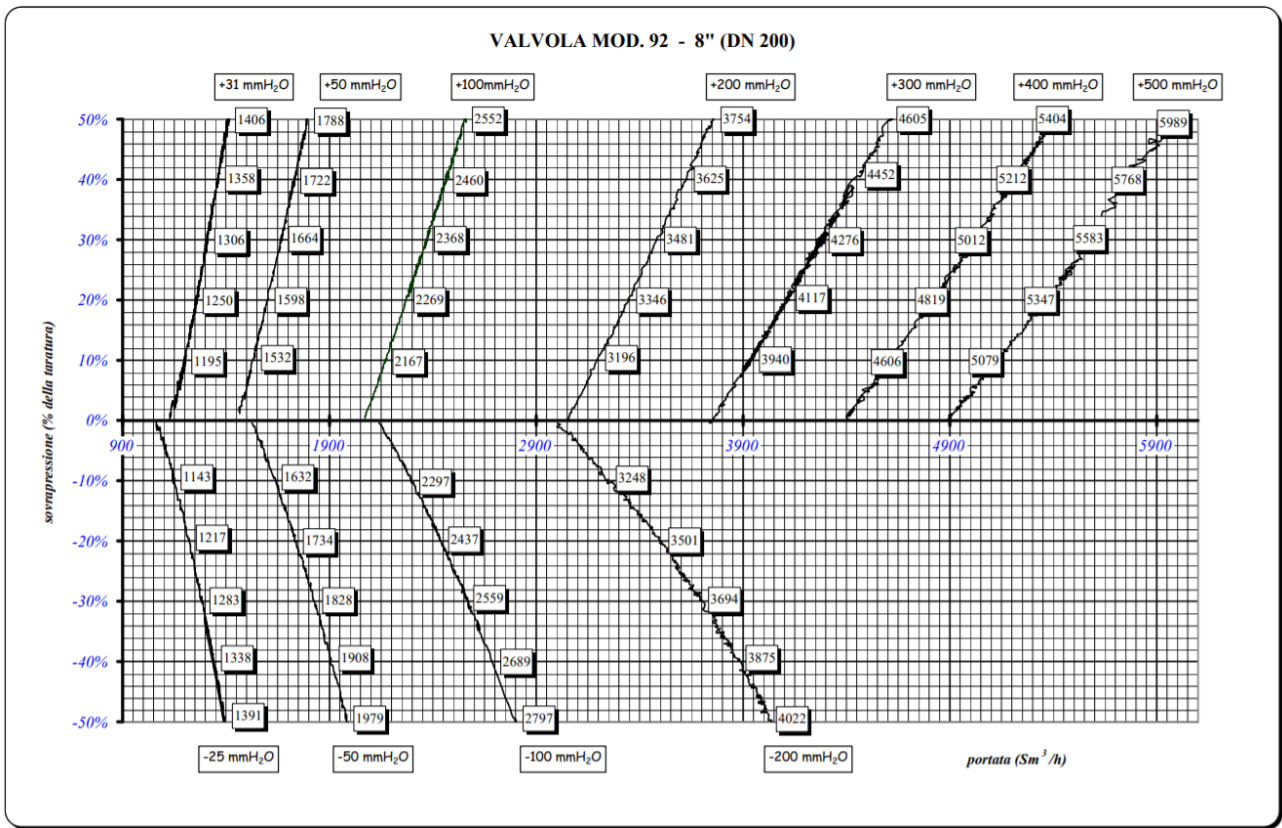
- NOTA: 1) los caudales de presión son los mismos para el modelo 53;
 2) los caudales de vacío son los mismos para el modelo 56.
- NOTE: 1) pressure flow rates values are the same for model 53;
 2) vacuum flow rates values are the same for model 56.

VALVOLA MOD. 92 - 2" (DN 50)

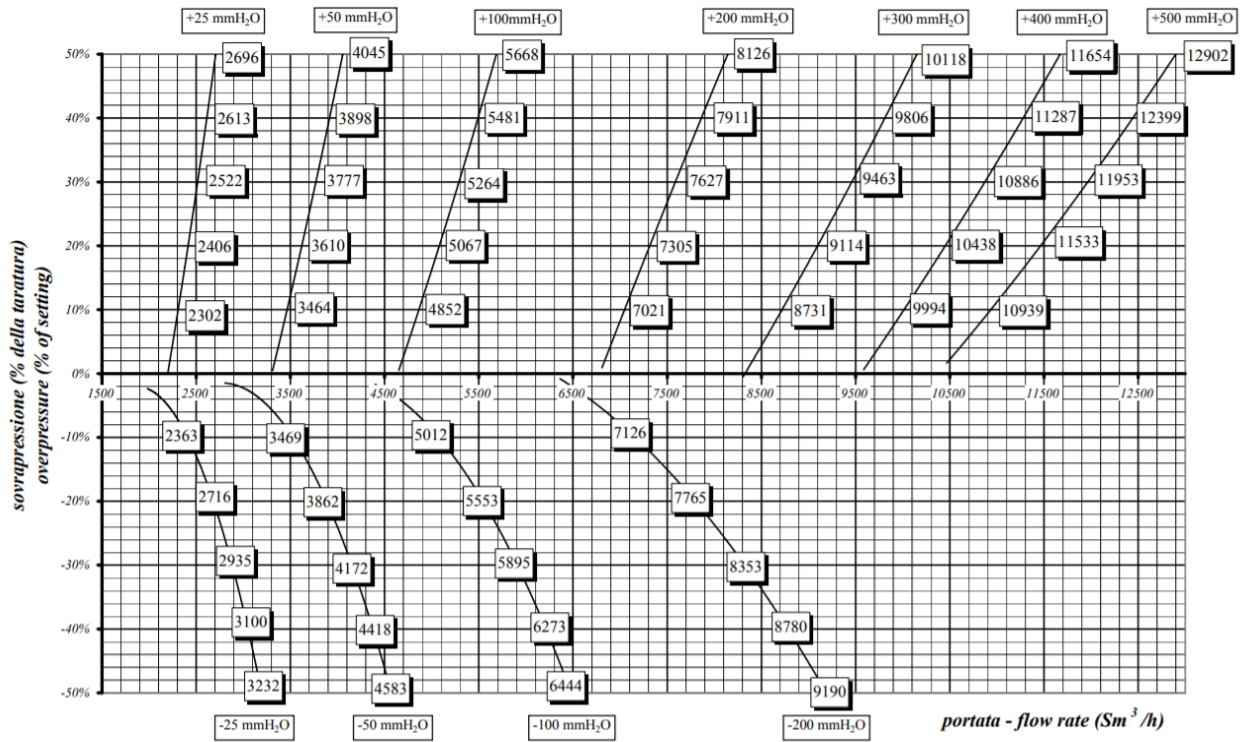


VALVOLA MOD. 92 - 6" (DN 150)

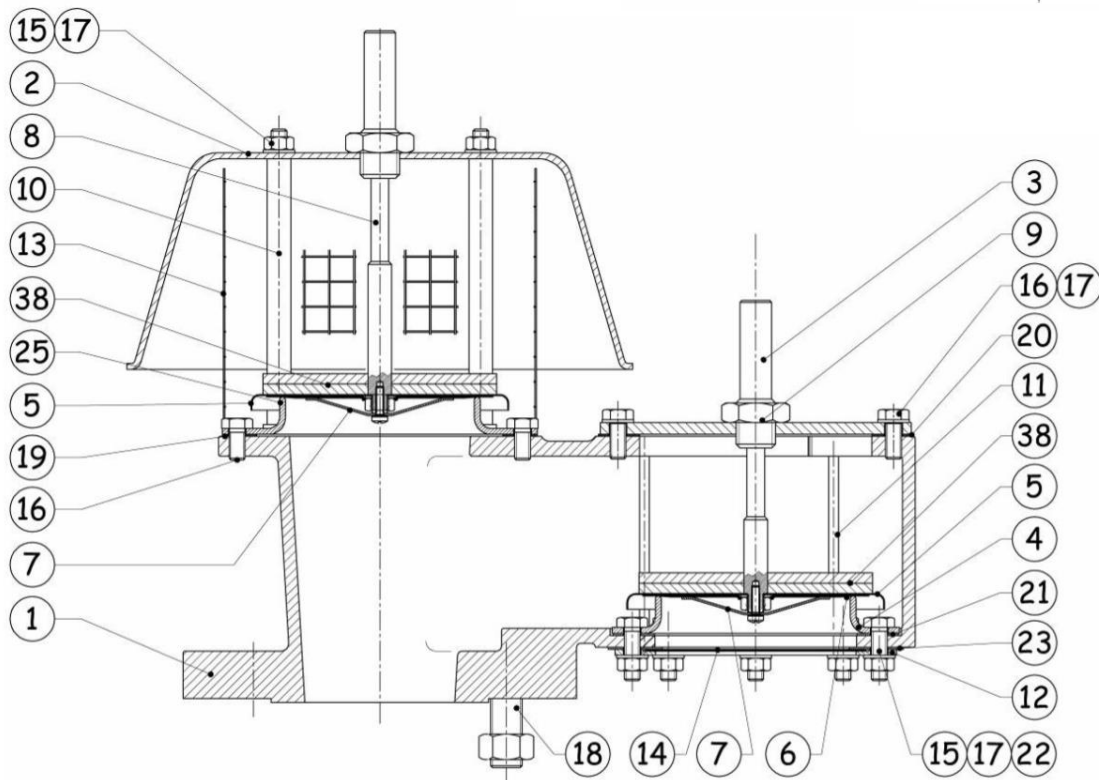
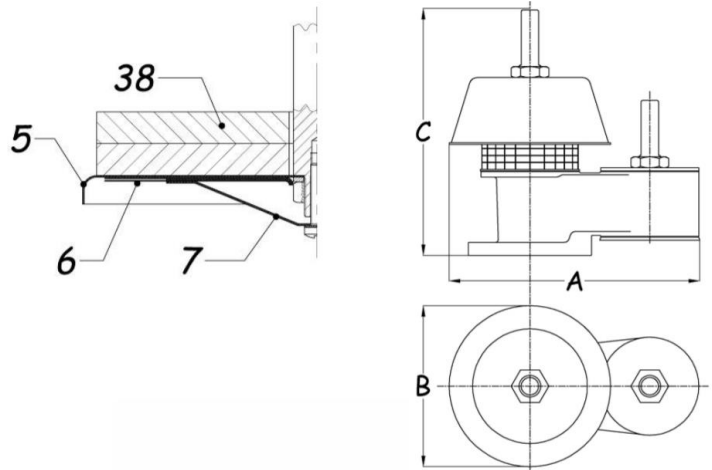




VALVOLA \ VALVE MOD. 92 - 12" (DN 300)



| TAMAÑO SIZE | A | B | C | PESO WEIGHT |
|----------------|-----|-----|-----|----------------|
| DN | mm | mm | mm | kg |
| 2" | 350 | 230 | 295 | 8 |
| 3" | 395 | 250 | 355 | 12 |
| 4" | 475 | 325 | 410 | 15 |



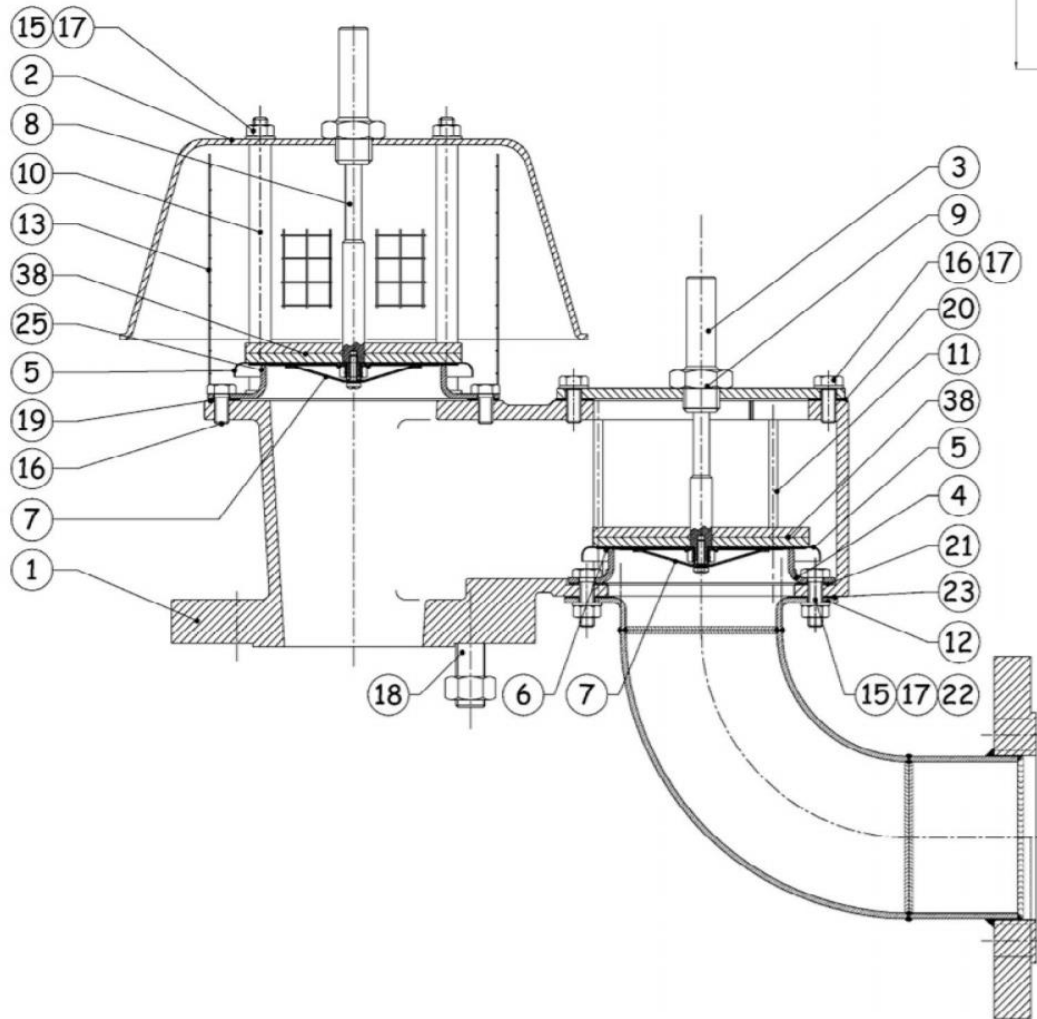
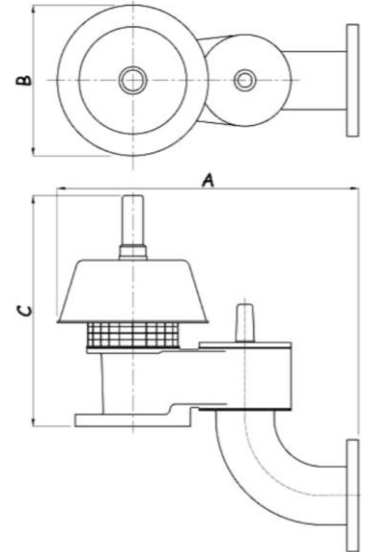
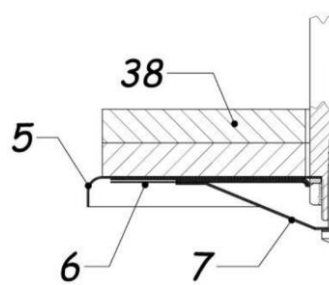
LISTA DE MATERIALES / MATERIALS AND PARTS LIST

| N° NO. | DESCRIPCIÓN DESCRIPTION | MATERIAL MATERIALS |
|--------|--------------------------------|-------------------------------|
| 1 | CUERPO BODY | ACERO AL CARBONO CARBON STEEL |
| 2 | CAPERUZA PRESIÓN PRESSURE HOOD | AISI 316 |
| 3 | TAPA VACÍO VACUUM COVER | AISI 316L |
| 4 | ASIENTO VACÍO VACUUM SEAT | AISI 316L |
| 5 | CLAPETA PALLET | AISI 316L |
| 6 | DIAFRAGMA DIAPHRAGM | P.T.F.E. + F.E.P. |
| 7 | DEFLECTOR DEFLECTOR | AISI 316L |
| 8 | VÁSTAGO PRESIÓN PRESSURE STEM | AISI 316 |
| 9 | VÁSTAGO VACÍO VACUUM STEM | AISI 316 |

| N° NO. | DESCRIPCIÓN DESCRIPTION | MATERIAL MATERIALS |
|--------|----------------------------------|--------------------|
| 10 | GUÍA PRESIÓN PRESSURE GUIDE | AISI 316 |
| 11 | GUÍA VACÍO VACUUM GUIDE | AISI 316 |
| 12 | VIERTEAGUAS WATER DRIP | AISI 316 |
| 13 | MALLA DE PRESIÓN PRESSURE SCREEN | AISI 304 |
| 14 | MALLA DE VACÍO VACUUM SCREEN | AISI 304 |
| 15 | TUERCA HEXAGONAL HEXAGONAL NUT | AISI 304 |
| 16 | TORNILLO SCREW | AISI 304 |
| 17 | ARANDELA WASHER | AISI 304 |
| 18 | EJE ROSCADO STUD BOLT | AISI 304 |

| N° NO. | DESCRIPCIÓN DESCRIPTION | MATERIAL MATERIALS |
|--------|-------------------------------|-------------------------------------|
| 19 | JUNTA GASKET | GRAFITO EXPANDIDO EXPANDED GRAPHITE |
| 20 | JUNTA GASKET | GRAFITO EXPANDIDO EXPANDED GRAPHITE |
| 21 | JUNTA GASKET | GRAFITO EXPANDIDO EXPANDED GRAPHITE |
| 22 | TORNILLO SCREW | AISI 304 |
| 23 | JUNTA GASKET | GRAFITO EXPANDIDO EXPANDED GRAPHITE |
| 25 | ASINETO PRESIÓN PRESSURE SEAT | AISI 316 |
| 38 | CONTRAPESOS LOADING WEIGHTS | PLOMO LEAD |

| TAMAÑO SIZE | A | B | C | PESO WEIGHT |
|----------------|-----|-----|-----|----------------|
| DN | mm | mm | mm | kg |
| 2" | 350 | 230 | 295 | 8 |
| 3" | 395 | 250 | 355 | 12 |
| 4" | 475 | 325 | 410 | 15 |



LISTA DE MATERIALES / MATERIALS AND PARTS LIST

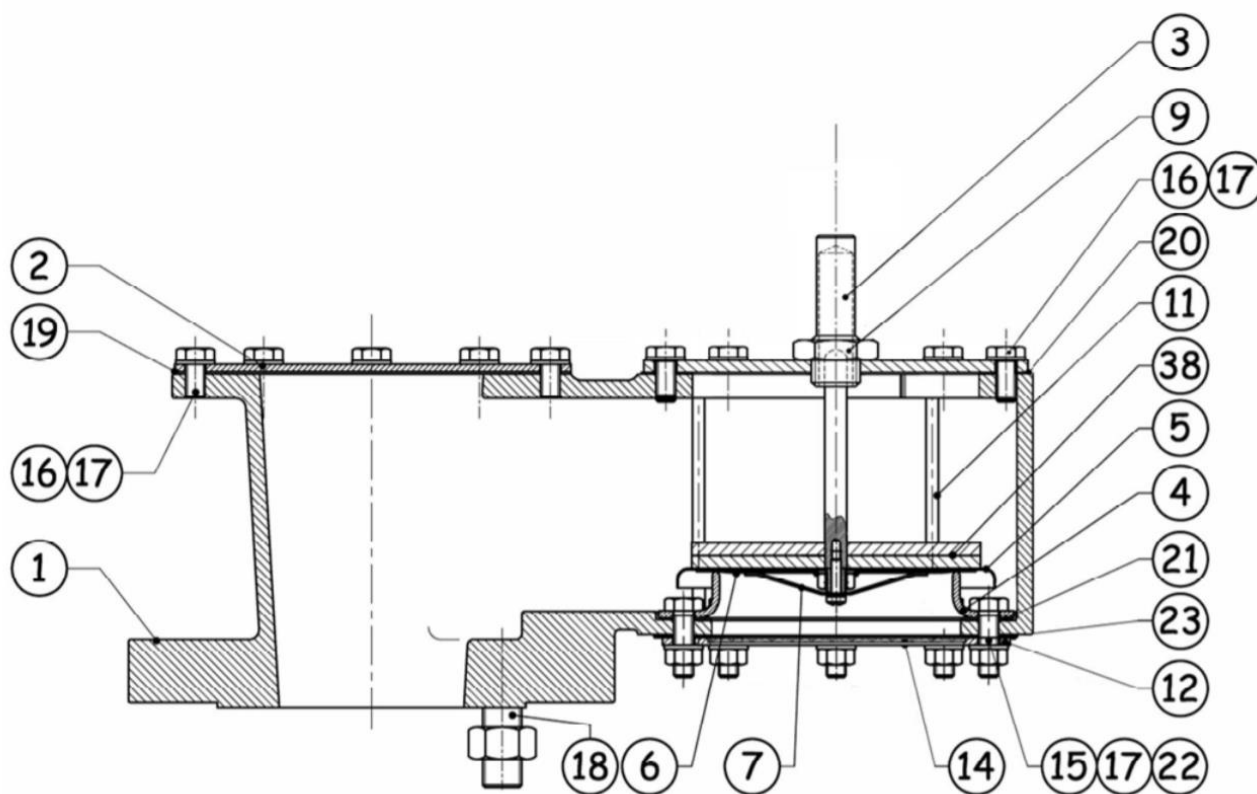
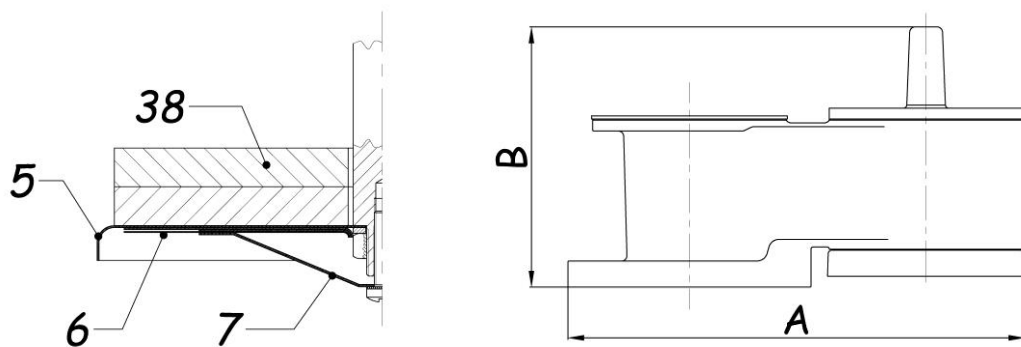
| N° NO. | DESCRIPCIÓN DESCRIPTION | MATERIAL MATERIALS |
|--------|--------------------------------|-------------------------------|
| 1 | CUERPO BODY | ACERO AL CARBONO CARBON STEEL |
| 2 | CAPERUZA PRESIÓN PRESSURE HOOD | AISI 316 |
| 3 | TAPA VACÍO VACUUM COVER | AISI 316L |
| 4 | ASIENTO VACÍO VACUUM SEAT | AISI 316L |
| 5 | CLAPETA PALLET | AISI 316L |
| 6 | DIAFRAGMA DIAPHRAGM | P.T.F.E. + F.E.P. |
| 7 | DEFLECTOR DEFLECTOR | AISI 316L |
| 8 | VÁSTAGO PRESIÓN PRESSURE STEM | AISI 316 |
| 9 | VÁSTAGO VACÍO VACUUM STEM | AISI 316 |

| N° NO. | DESCRIPCIÓN DESCRIPTION | MATERIAL MATERIALS |
|--------|----------------------------------|--------------------|
| 10 | GUÍA PRESIÓN PRESSURE GUIDE | AISI 316 |
| 11 | GUÍA VACÍO VACUUM GUIDE | AISI 316 |
| 12 | VIERTEAGUAS WATER DRIP | AISI 316 |
| 13 | MALLA DE PRESIÓN PRESSURE SCREEN | AISI 304 |
| 14 | MALLA DE VACÍO VACUUM SCREEN | AISI 304 |
| 15 | TUERCA HEXAGONAL HEXAGONAL NUT | AISI 304 |
| 16 | TORNILLO SCREW | AISI 304 |
| 17 | ARANDELA WASHER | AISI 304 |
| 18 | EJE ROSCADO STUD BOLT | AISI 304 |

| N° NO. | DESCRIPCIÓN DESCRIPTION | MATERIAL MATERIALS |
|--------|-------------------------------|-------------------------------------|
| 19 | JUNTA GASKET | GRAFITO EXPANDIDO EXPANDED GRAPHITE |
| 20 | JUNTA GASKET | GRAFITO EXPANDIDO EXPANDED GRAPHITE |
| 21 | JUNTA GASKET | GRAFITO EXPANDIDO EXPANDED GRAPHITE |
| 22 | TORNILLO SCREW | AISI 304 |
| 23 | JUNTA GASKET | GRAFITO EXPANDIDO EXPANDED GRAPHITE |
| 25 | ASINETO PRESIÓN PRESSURE SEAT | AISI 316 |
| 38 | CONTRAPESOS LOADING WEIGHTS | PLOMO LEAD |

| | | |
|---------------------------------|--|--|
| COSTRUZIONI MECCANICHE LUPI SRL | VÁLVULA DE SEGURIDAD DE VACÍO VACUUM RELIEF VALVE | Modelo – Model 56 EWV F |
|---------------------------------|--|--|

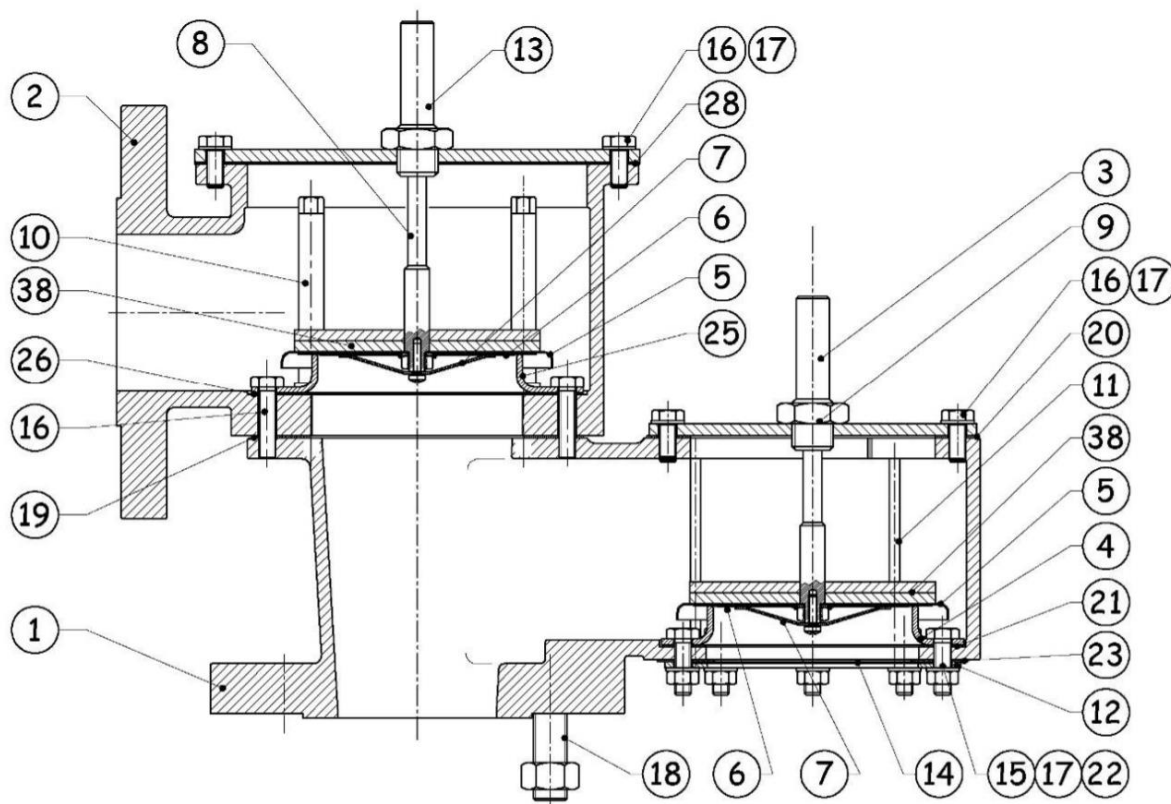
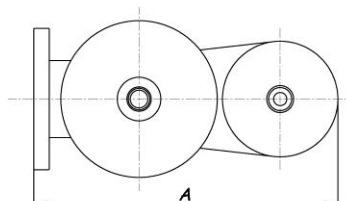
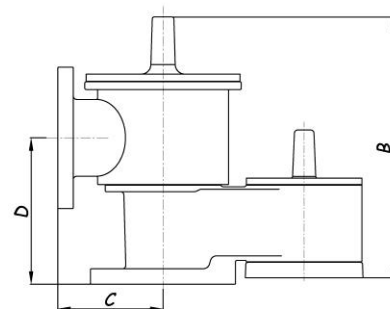
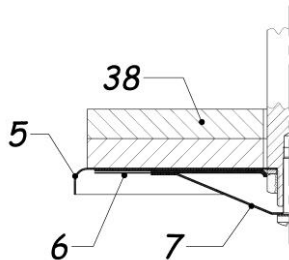
| TAMAÑO SIZE | A | B |
|----------------|-----|-----|
| DN | mm | mm |
| 2" | 315 | 180 |
| 3" | 370 | 215 |
| 4" | 425 | 245 |



LISTADE MATERIALES / MATERIALS AND PARTS LIST

| N° NO. | DESCRIPCIÓN DESCRIPTION | MATERIAL MATERIALS | N° NO. | DESCRIPCIÓN DESCRIPTION | MATERIAL MATERIALS | N° NO. | DESCRIPCIÓN DESCRIPTION | MATERIAL MATERIALS |
|--------|---------------------------|-------------------------------|--------|--------------------------------|--------------------|--------|-----------------------------|--------------------|
| 1 | CUERPO BODY | ACERO AL CARBONO CARBON STEEL | 9 | VÁSTAGO VACÍO VACUUM STEM | AISI 316 | 18 | EJE ROSCADO STUD BOLT | AISI 304 |
| 2 | TAPA COVER | AISI 316L | 11 | GUIA VACÍO VACUUM GUIDE | AISI 316 | 19 | JUNTA GASKET | GRAFITO GRAPHITE |
| 3 | TAPA VACÍO VACUUM COVER | AISI 316L | 12 | VIERTEGUAS WATER DRIP | AISI 316L | 20 | JUNTA GASKET | GRAFITO GRAPHITE |
| 4 | ASIENTO VACÍO VACUUM SEAT | AISI 316L | 14 | MALLA VACÍO VACUUM SCREEN | AISI 304 | 21 | JUNTA GASKET | GRAFITO GRAPHITE |
| 5 | CLAPETA PALLET | AISI 316L | 15 | TUERCA HEXAGONAL HEXAGONAL NUT | AISI 304 | 22 | TORNILLO SCREW | AISI 304 |
| 6 | DIAPHRAGMA DIAPHRAGM | PTFE + FEP | 16 | TORNILLO SCREW | AISI 304 | 23 | JUNTA GASKET | GRAFITO GRAPHITE |
| 7 | DEFLECTOR DEFLECTOR | AISI 316L | 17 | ARANDELA WASHER | AISI 304 | 38 | CONTRAPESOS LOADING WEIGHTS | PLOMO LEAD |

| TAMAÑO SIZE | A | B | C | D |
|----------------|-----|-----|-----|-----|
| DN | mm | mm | mm | mm |
| 2" | 360 | 290 | 130 | 177 |
| 3" | 415 | 352 | 145 | 200 |
| 4" | 470 | 416 | 160 | 231 |



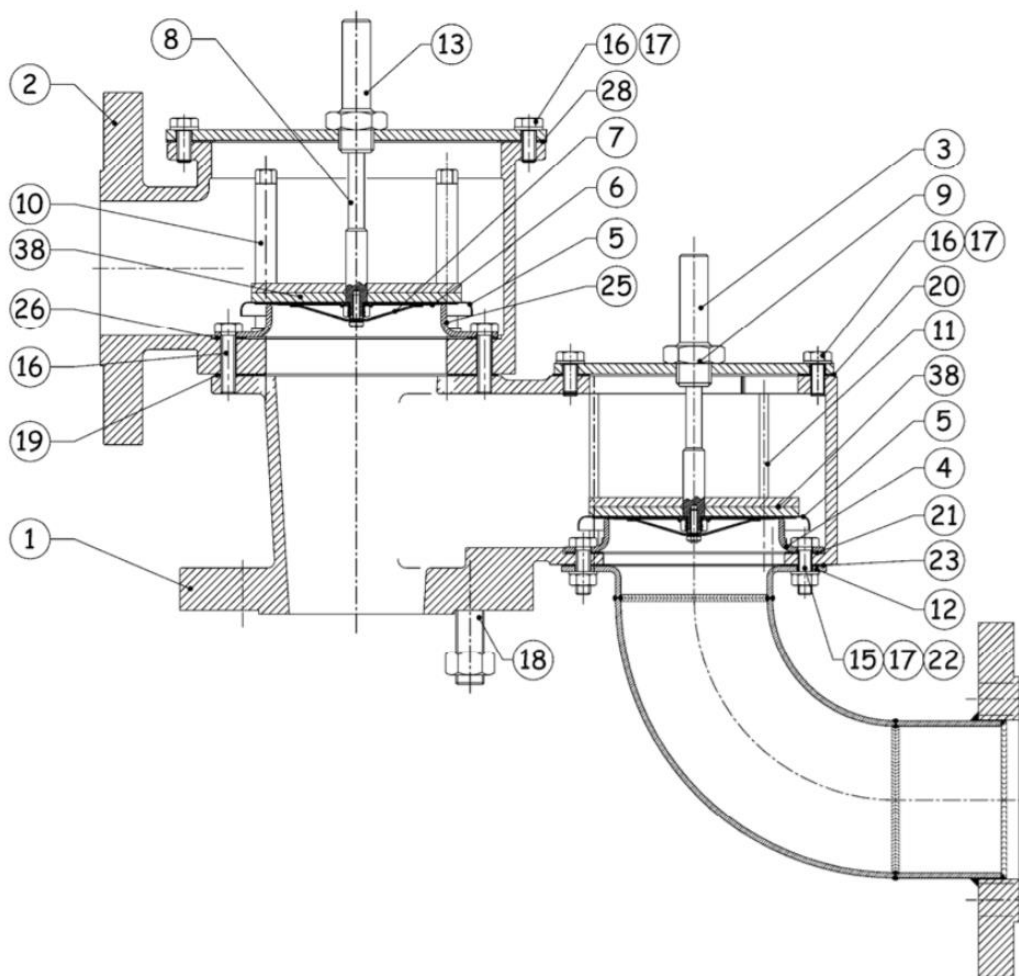
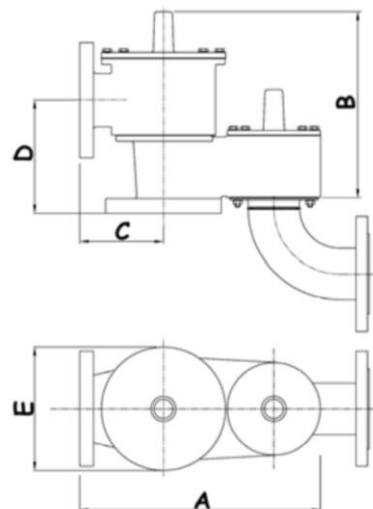
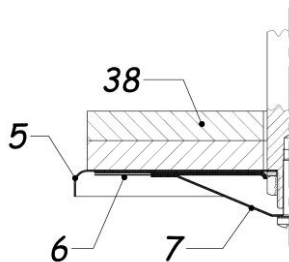
LISTA DE MATERIALES / MATERIALS AND PARTS LIST

| N° NO. | DESCRIPCIÓN DESCRIPTION | MATERIAL MATERIALS |
|--------|--|----------------------------------|
| 1 | CUERPO BODY | ACERO AL CARBONO CARBON STEEL |
| 2 | CONDUCCIÓN DE PRESIÓN PRESSURE CONVEYOR | ACERO AL CARBONO CARBON STEEL |
| 3 | TAPA DE VACÍO VACUUM COVER | AISI 316L |
| 4 | ASIENTO PRESIÓN VACUUM SEAT | AISI 316L |
| 5 | CLAPETA PALLET | AISI 316L |
| 6 | DIAPHRAGMA DIAPHRAGM | P.T.F.E. + F.E.P. |
| 7 | DEFLECTOR DEFLECTOR | AISI 316L |
| 8 | VÁSTAGO PRESIÓN PRESSURE STEM | AISI 316L |
| 9 | VÁSTAGO VACÍO VACUUM STEM | AISI 316L |

| N° NO. | DESCRIPCIÓN DESCRIPTION | MATERIAL MATERIALS |
|--------|----------------------------------|-----------------------|
| 10 | GUIA PRESIÓN PRESSURE GUIDE | AISI 316 |
| 11 | GUIA VACÍO VACUUM GUIDE | AISI 316 |
| 12 | VIERTEGUAS WATER DRIP | AISI 316L |
| 13 | TAPA PRESIÓN PRESSURE COVER | AISI 316L |
| 14 | MALLA VACÍO VACUUM SCREEN | AISI 316 |
| 15 | TUERCA HEXAGONAL EXAGONAL NUT | AISI 304 |
| 16 | TORNILLO SCREW | AISI 304 |
| 17 | ARANDELA WASHER | AISI 304 |
| 18 | EJE ROSCADO STUD BOLT | AISI 304 |

| N° NO. | DESCRIPCIÓN DESCRIPTION | MATERIAL MATERIALS |
|--------|----------------------------------|--|
| 19 | JUNTA GASKET | GRAFITO EXPANDIDO EXPANDED GRAPHITE |
| 20 | JUNTA GASKET | GRAFITO EXPANDIDO EXPANDED GRAPHITE |
| 21 | JUNTA GASKET | GRAFITO EXPANDIDO EXPANDED GRAPHITE |
| 22 | TORNILLO SCREW | AISI 304 |
| 23 | JUNTA GASKET | GRAFITO EXPANDIDO EXPANDED GRAPHITE |
| 25 | ASIENTO PRESIÓN PRESSURE SEAT | AISI 316L |
| 26 | JUNTA GASKET | GRAFITO EXPANDIDO EXPANDED GRAPHITE |
| 28 | JUNTA GASKET | GRAFITO EXPANDIDO EXPANDED GRAPHITE |
| 38 | CONTRAPESOS LOADING WEIGHTS | PLOMO LEAD |

| TAMAÑO SIZE | A | B | C | D | E |
|----------------|-----|-----|-----|-----|-----|
| DN | mm | mm | mm | mm | mm |
| 2" | 360 | 290 | 130 | 177 | 195 |
| 3" | 415 | 352 | 145 | 200 | 215 |
| 4" | 470 | 416 | 160 | 231 | 240 |



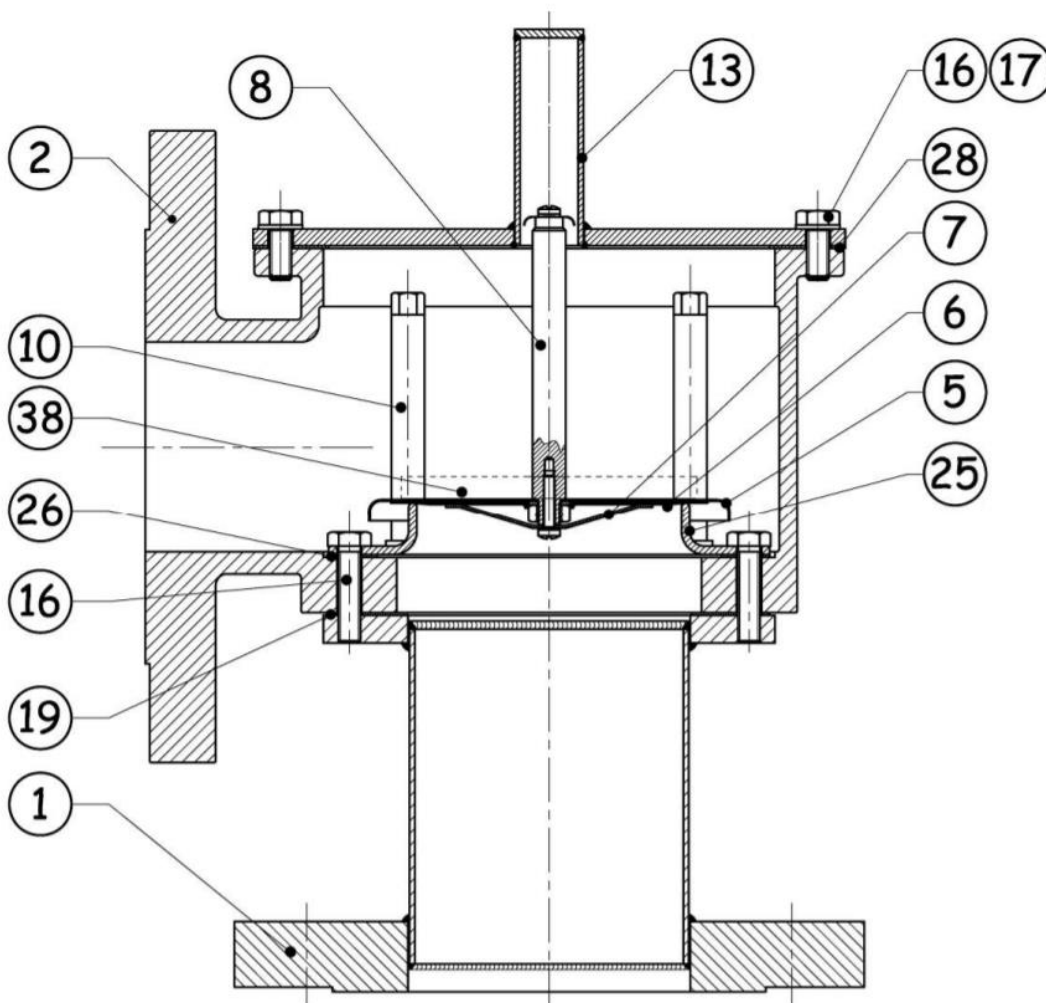
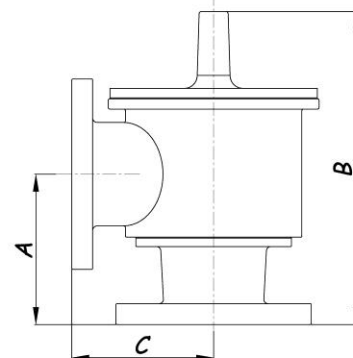
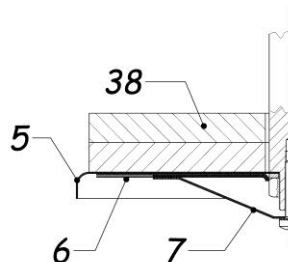
LISTA DE MATERIALES / MATERIALS AND PARTS LIST

| N° NO. | DESCRIPCIÓN DESCRIPTION | MATERIAL MATERIALS |
|--------|--|----------------------------------|
| 1 | CUERPO BODY | ACERO AL CARBONO CARBON STEEL |
| 2 | CONDUCCIÓN DE PRESIÓN PRESSURE CONVEYOR | ACERO AL CARBONO CARBON STEEL |
| 3 | TAPA DE VACÍO VACUUM COVER | AISI 316L |
| 4 | ASIENTO PRESIÓN PRESSURE SEAT | AISI 316L |
| 5 | CLAPETA PALLET | AISI 316L |
| 6 | DIAPHRAGMA DIAPHRAGM | P.T.F.E. + F.E.P. |
| 7 | DEFLECTOR DEFLECTOR | AISI 316L |
| 8 | VÁSTAGO PRESIÓN PRESSURE STEM | AISI 316L |
| 9 | VÁSTAGO VACÍO VACUUM STEM | AISI 316L |

| N° NO. | DESCRIPCIÓN DESCRIPTION | MATERIAL MATERIALS |
|--------|----------------------------------|-----------------------|
| 10 | GUIA PRESIÓN PRESSURE GUIDE | AISI 316 |
| 11 | GUIA VACÍO VACUUM GUIDE | AISI 316 |
| 12 | VIERTEGUAS WATER DRIP | AISI 316L |
| 13 | TAPA PRESIÓN PRESSURE COVER | AISI 316L |
| 14 | MALLA VACÍO VACUUM SCREEN | AISI 316 |
| 15 | TUERCA HEXAGONAL EXAGONAL NUT | AISI 304 |
| 16 | TORNILLO SCREW | AISI 304 |
| 17 | ARANDELA WASHER | AISI 304 |
| 18 | EJE ROSCADO STUD BOLT | AISI 304 |

| N° NO. | DESCRIPCIÓN DESCRIPTION | MATERIAL MATERIALS |
|--------|----------------------------------|--|
| 19 | JUNTA GASKET | GRAFITO EXPANDIDO EXPANDED GRAPHITE |
| 20 | JUNTA GASKET | GRAFITO EXPANDIDO EXPANDED GRAPHITE |
| 21 | JUNTA GASKET | GRAFITO EXPANDIDO EXPANDED GRAPHITE |
| 22 | TORNILLO SCREW | AISI 304 |
| 23 | JUNTA GASKET | GRAFITO EXPANDIDO EXPANDED GRAPHITE |
| 25 | ASIENTO PRESIÓN PRESSURE SEAT | AISI 316L |
| 26 | JUNTA GASKET | GRAFITO EXPANDIDO EXPANDED GRAPHITE |
| 28 | JUNTA GASKET | GRAFITO EXPANDIDO EXPANDED GRAPHITE |
| 38 | CONTRAPESOS LOADING WEIGHTS | PLOMO / AISI316L LEAD / AISI316L |

| TAMAÑO SIZE | A | B | C |
|----------------|-----|-----|-----|
| DN | mm | mm | mm |
| 2" | 137 | 250 | 130 |
| 3" | 155 | 307 | 145 |
| 4" | 180 | 365 | 160 |



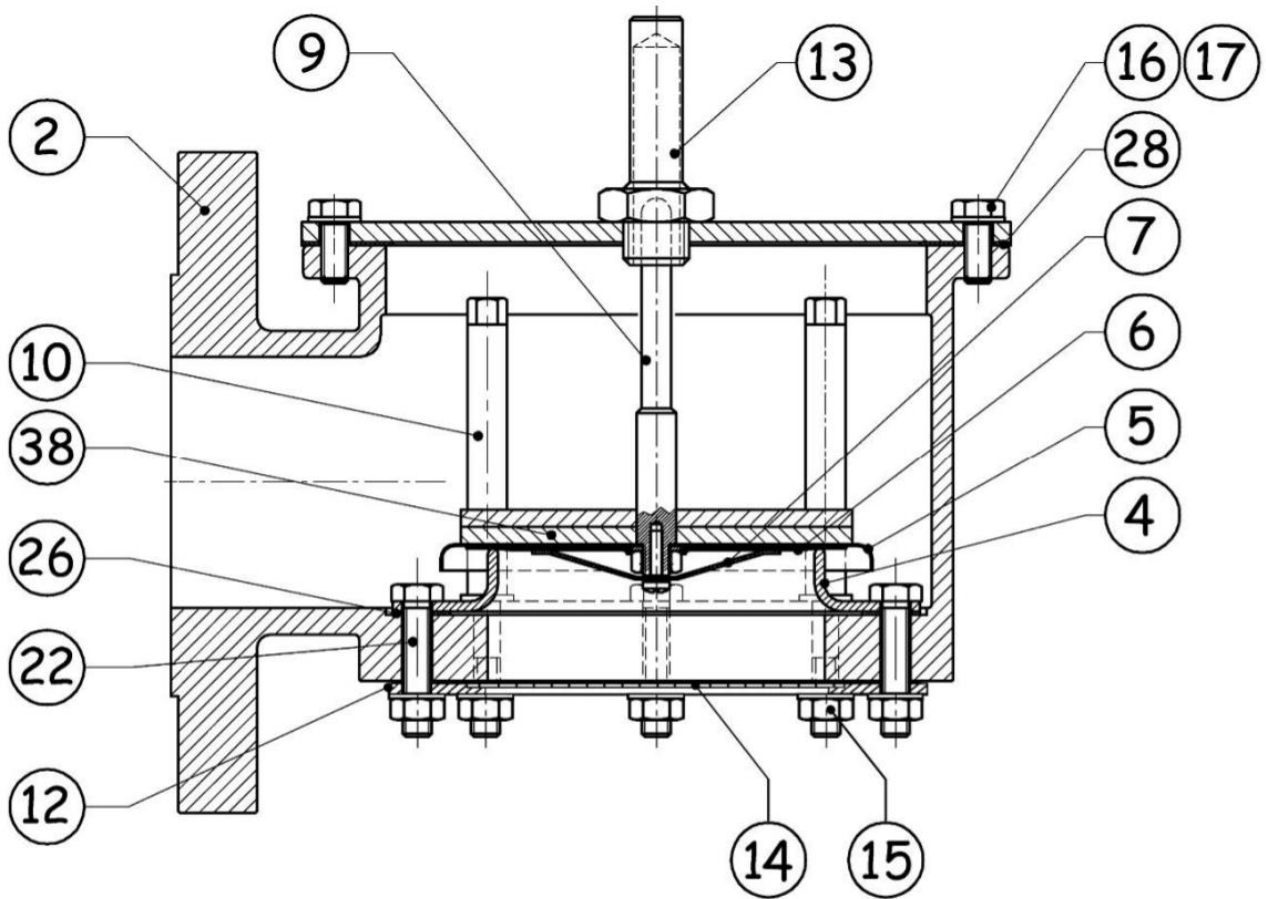
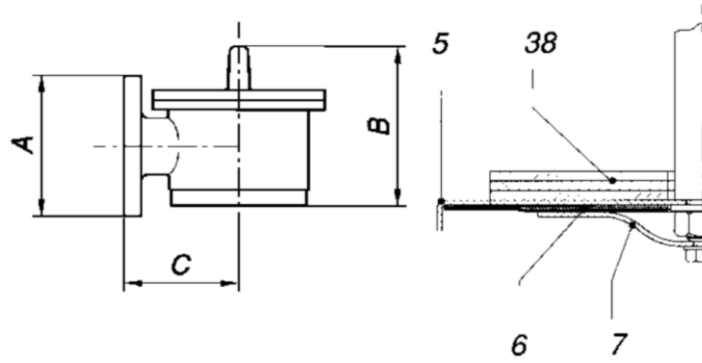
LISTA DE MATERIALES / MATERIALS AND PARTS LIST

| Nº NO. | DESCRIPCIÓN DESCRIPTION | MATERIAL MATERIALS |
|--------|---|----------------------------------|
| 1 | CUERPO BODY | ACERO AL CARBONO CARBON STEEL |
| 2 | CONDUCCIÓN PRESIÓN PRESSURE CONVEYOR | ACERO AL CARBONO CARBON STEEL |
| 5 | CLAEPTA PALLET | AISI 316 |
| 6 | DIAFRAGMA DIAPHRAGM | F.E.P. + P.T.F.E. |
| 7 | DEFLECTOR DEFLECTOR | AISI 316 |

| Nº NO. | DESCRIPCIÓN DESCRIPTION | MATERIAL MATERIALS |
|--------|-------------------------------------|-----------------------|
| 8 | VÁSTAGO DE PRESIÓN PRESSURE STEM | AISI 316 |
| 10 | GUIA DE PRESIÓN PRESSURE GUIDE | AISI 304 |
| 13 | TAPA DE PRESIÓN PRESSURE COVER | AISI 316 |
| 16 | TORNILLO SCREW | AISI 316 |
| 17 | ARANDELA WASHER | AISI 316 |

| Nº NO. | DESCRIPCIÓN DESCRIPTION | MATERIAL MATERIALS |
|--------|-------------------------------------|--|
| 19 | JUNTA GASKET | GRAFITO EXPANDIDO EXPANDED GRAPHITE |
| 25 | ASIENTO DE PRESIÓN PRESSURE SEAT | AISI 304 |
| 26 | JUNTA GASKET | GRAFITO EXPANDIDO EXPANDED GRAPHITE |
| 28 | JUNTA GASKET | GRAFITO EXPANDIDO EXPANDED GRAPHITE |
| 38 | CONTRAPESOS LOADING WEIGHTS | PLOMO LEAD |

| TAMAÑO SIZE | A | B | C | D |
|----------------|-----|-----|-----|-----|
| DN | mm | mm | mm | mm |
| 2" | 46 | 181 | 130 | 74 |
| 3" | 95 | 239 | 145 | 96 |
| 4" | 114 | 292 | 160 | 109 |



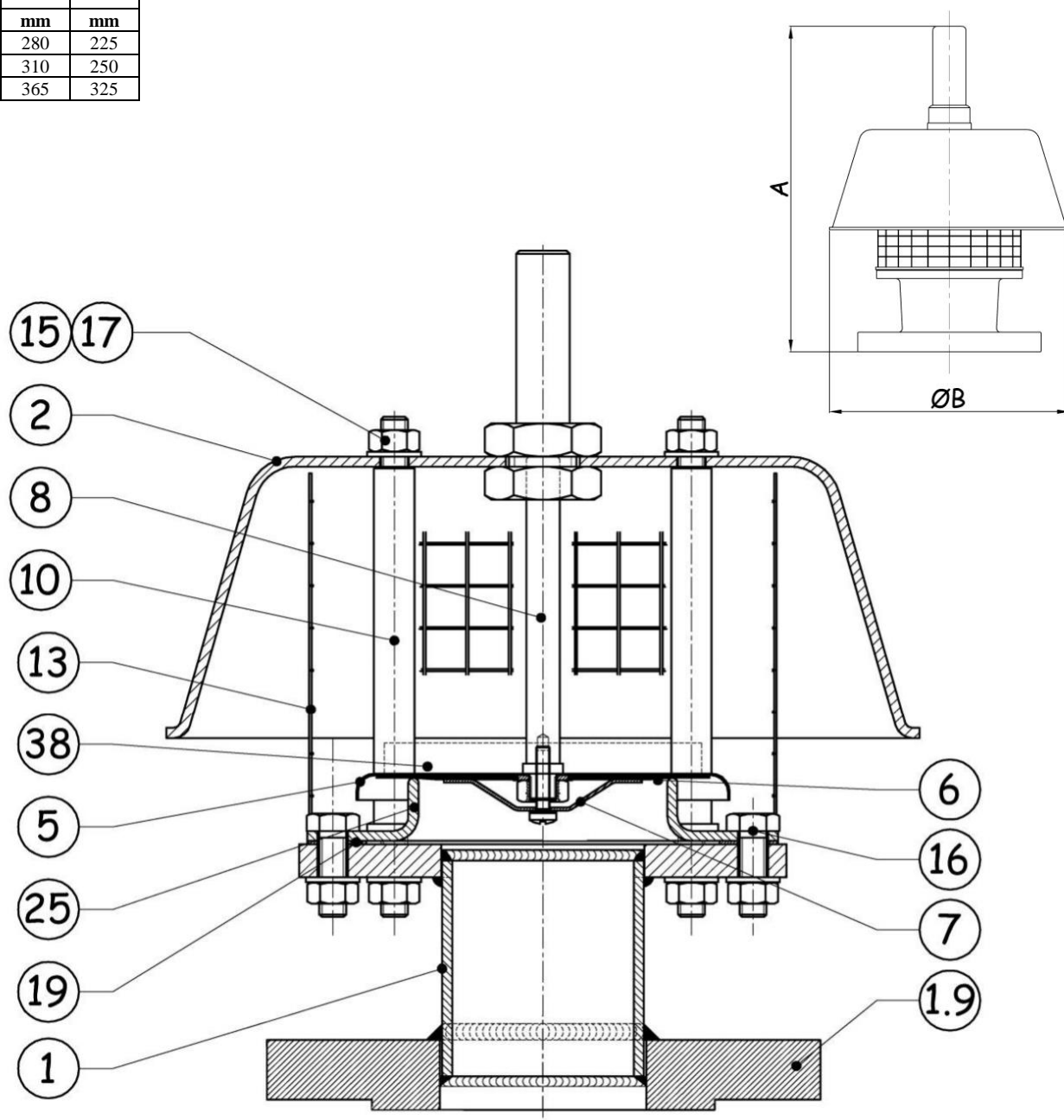
LISTA DE MATERIALES / MATERIALS AND PARTS LIST

| N° NO. | DESCRIPCIÓN DESCRIPTION | MATERIAL MATERIALS |
|--------|---------------------------------------|----------------------------------|
| 2 | CONDUCCIÓN PRESIÓN PRESS. CONVEYOR | ACERO AL CARBONO CARBON STEEL |
| 4 | ASIENTO PRESIÓN VACUUM SEAT | AISI 316L |
| 5 | CLAEPTA PALLET | AISI 316 |
| 6 | DIAPHRAGMA DIAPHRAGM | FEP+P.T.F.E |
| 7 | DEFLECTOR DEFLECTOR | AISI 316 |
| 9 | VÁSTAGO VACÍO VACUUM STEM | AISI 316 |

| N° NO. | DESCRIPCIÓN DESCRIPTION | MATERIAL MATERIALS |
|--------|-----------------------------------|-----------------------|
| 10 | GUIA DE PRESIÓN PRESSURE GUIDE | AISI 316 |
| 12 | VIERTEAGUAS WATER DRIP | AISI 316 |
| 13 | TAPA DE VACÍO VACUUM COVER | AISI 316 |
| 14 | TORNILLO SCREEN | AISI 316 |
| 15 | TUERCA HEXAGONAL HEXAGONAL NUT | AISI 316 |
| 16 | TORNILLO SCREW | AISI 316 |

| N° NO. | DESCRIPCIÓN DESCRIPTION | MATERIAL MATERIALS |
|--------|--------------------------------|--|
| 17 | ARANDELA WASHER | AISI 316 |
| 22 | TORNILLO SCREW | AISI 316 |
| 26 | JUNTA GASKET | GRAFITO EXPANDIDO EXPANDED GRAPHITE |
| 28 | JUNTA GASKET | GRAFITO EXPANDIDO EXPANDED GRAPHITE |
| 38 | CONTRAPESOS LOADING WEIGHTS | PLOMO / AISI 316 LEAD / AISI 316 |

| TAMAÑO SIZE | A | B |
|----------------|-----|-----|
| DN | mm | mm |
| 2" | 280 | 225 |
| 3" | 310 | 250 |
| 4" | 365 | 325 |



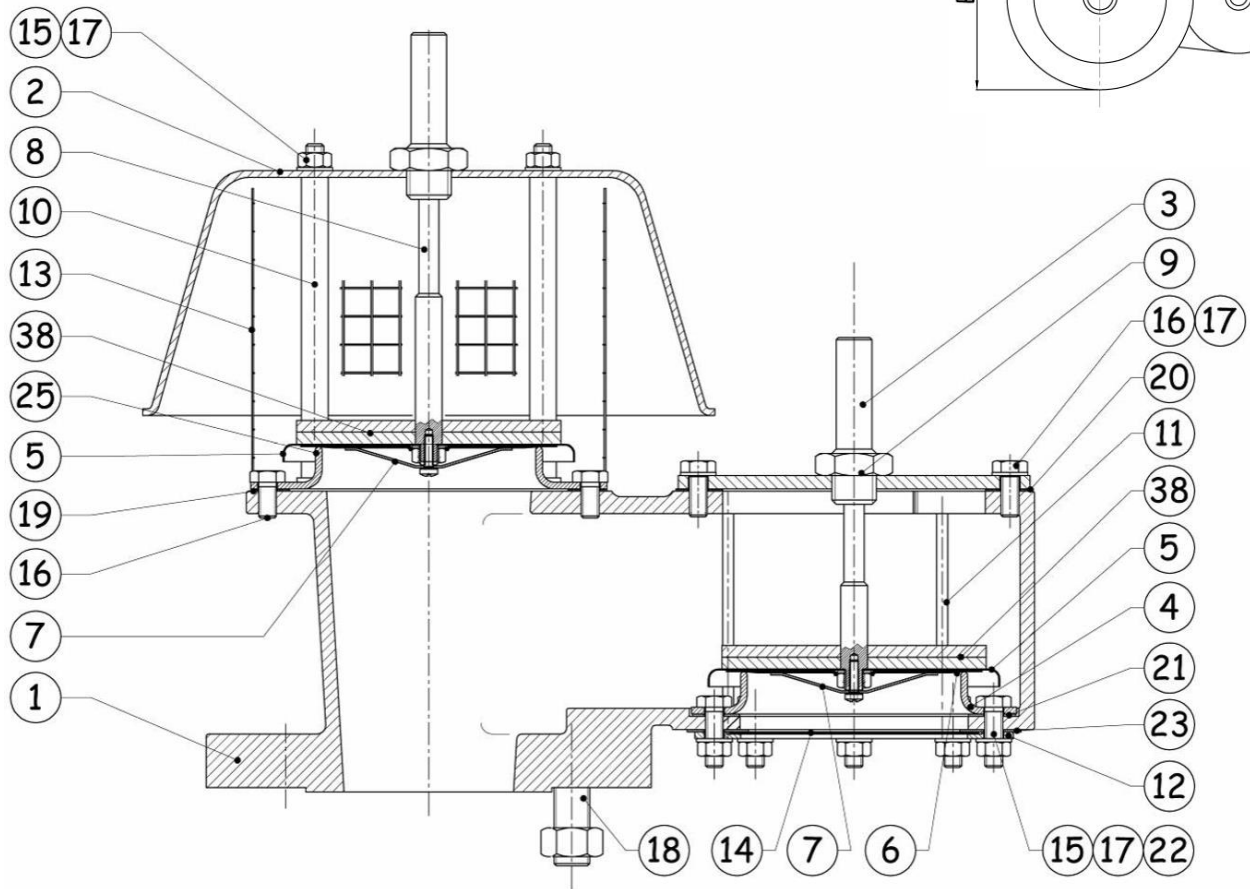
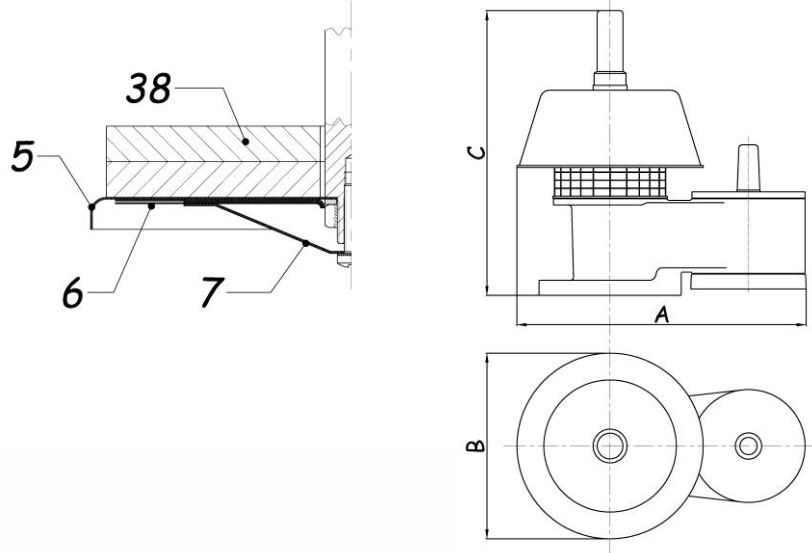
LISTA DE MATERIALES / MATERIALS AND PARTS LIST

| Nº NO. | DESCRIPCIÓN DESCRIPTION | MATERIAL MATERIALS |
|--------|----------------------------|-----------------------|
| 1 | CUERPO BODY | AISI 316 |
| 2 | CAPERUZA PRESSURE HOOD | AISI 316 |
| 5 | CLAPETA PALLET | AISI 316 |
| 6 | DIAFRAGMA DIAPHRAGM | F.E.P. + P.T.F.E. |
| 7 | DEFLECTOR DEFLECTOR | AISI 316 |

| Nº NO. | DESCRIPCIÓN DESCRIPTION | MATERIAL MATERIALS |
|--------|-----------------------------------|-----------------------|
| 8 | VÁSTAGO PRESIÓN PRESSURE STEM | AISI 316 |
| 10 | GUIA PRESIÓN PRESSURE GUIDE | AISI 316 |
| 13 | MALLA PRESIÓN PRESSURE SCREEN | AISI 304 |
| 15 | TUERCA HEXAGONAL HEXAGONAL NUT | AISI 316 |
| 16 | TORNILLO SCREW | AISI 316 |

| Nº NO. | DESCRIPCIÓN DESCRIPTION | MATERIAL MATERIALS |
|--------|----------------------------------|--|
| 17 | ARANDELA WASHER | AISI 316 |
| 19 | JUNTA GASKET | GRAFITO EXPANDIDO EXPANDED GRAPHITE |
| 25 | ASIENTO PRESIÓN PRESSURE SEAT | AISI 316L |
| 38 | CONTRAPESOS LOADING WEIGHTS | PLOMO / AISI 316L LEAD / AISI 316L |
| 1.9 | BRIDA FLANGE | AISI 316L |

| TAMAÑO SIZE | A | B | C | PESO WEIGHT |
|----------------|-----|-----|-----|----------------|
| DN | mm | mm | mm | kg |
| 2" | 350 | 230 | 295 | 8 |
| 3" | 395 | 250 | 355 | 12 |
| 4" | 475 | 325 | 410 | 15 |



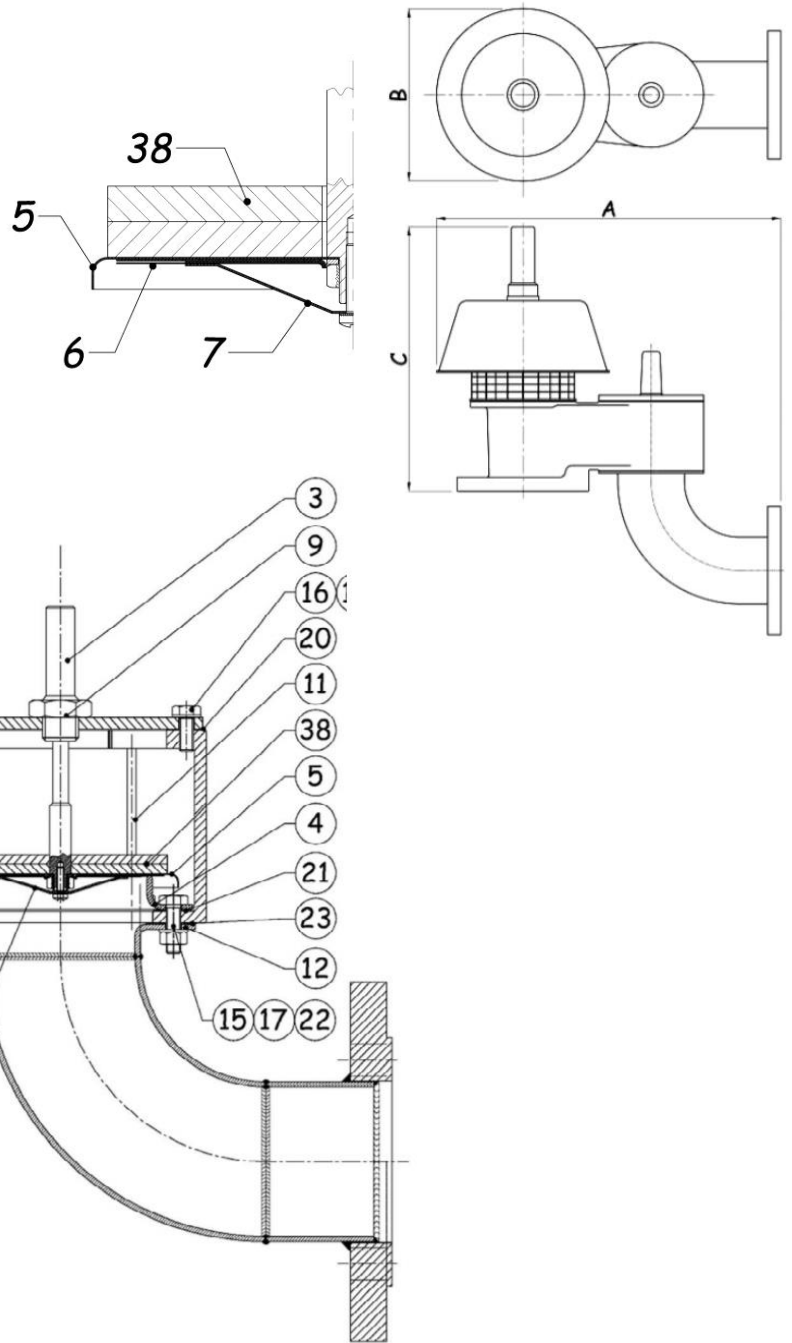
LISTA DE MATERIALES / MATERIALS AND PARTS LIST

| N° NO. | DESCRIPCIÓN DESCRIPTION | MATERIAL MATERIALS |
|--------|-----------------------------------|-----------------------|
| 1 | CUERPO BODY | CF8M |
| 2 | CAPERUZA PRESIÓN PRESSURE HOOD | AISI 316L |
| 3 | TAPA VACÍO VACUUM COVER | AISI 316L |
| 4 | ASIENTO VACÍO VACUUM SEAT | AISI 316L |
| 5 | CLAPETA PALLET | AISI 316L |
| 6 | DIAFRAGMA DIAPHRAGM | P.T.F.E. + F.E.P. |
| 7 | DEFLECTOR DEFLECTOR | AISI 316L |
| 8 | VÁSTAGO PRESIÓN PRESSURE STEM | AISI 316L |
| 9 | VÁSTAGO VACÍO VACUUM STEM | AISI 316L |

| N° NO. | DESCRIPCIÓN DESCRIPTION | MATERIAL MATERIALS |
|--------|-------------------------------------|-----------------------|
| 10 | GUÍA PRESIÓN PRESSURE GUIDE | AISI 316L |
| 11 | GUÍA VACÍO VACUUM GUIDE | AISI 316L |
| 12 | VIERTEAGUAS WATER DRIP | AISI 316L |
| 13 | MALLA DE PRESIÓN PRESSURE SCREEN | AISI 316L |
| 14 | MALLA DE VACÍO VACUUM SCREEN | AISI 316L |
| 15 | TUERCA HEXAGONAL HEXAGONAL NUT | AISI 316L |
| 16 | TORNILLO SCREW | AISI 316L |
| 17 | ARANDELA WASHER | AISI 316L |
| 18 | EJE ROSCADO STUD BOLT | AISI 316L |

| N° NO. | DESCRIPCIÓN DESCRIPTION | MATERIAL MATERIALS |
|--------|----------------------------------|--|
| 19 | JUNTA GASKET | EXPANDED GRAPHITE GRAFITO EXPANDIDO |
| 20 | JUNTA GASKET | EXPANDED GRAPHITE GRAFITO EXPANDIDO |
| 21 | JUNTA GASKET | EXPANDED GRAPHITE GRAFITO EXPANDIDO |
| 22 | TORNILLO SCREW | AISI 304 |
| 23 | JUNTA GASKET | EXPANDED GRAPHITE GRAFITO EXPANDIDO |
| 25 | ASINETO PRESIÓN PRESSURE SEAT | AISI 316L |
| 38 | CONTRAPESOS LOADING WEIGHTS | PLOMO / AISI 316L LEAD / AISI 316L |

| TAMAÑO SIZE | A | B | C | PESO WEIGHT |
|----------------|-----|-----|-----|----------------|
| DN | mm | mm | mm | kg |
| 2" | 350 | 230 | 295 | 8 |
| 3" | 395 | 250 | 355 | 12 |
| 4" | 475 | 325 | 410 | 15 |



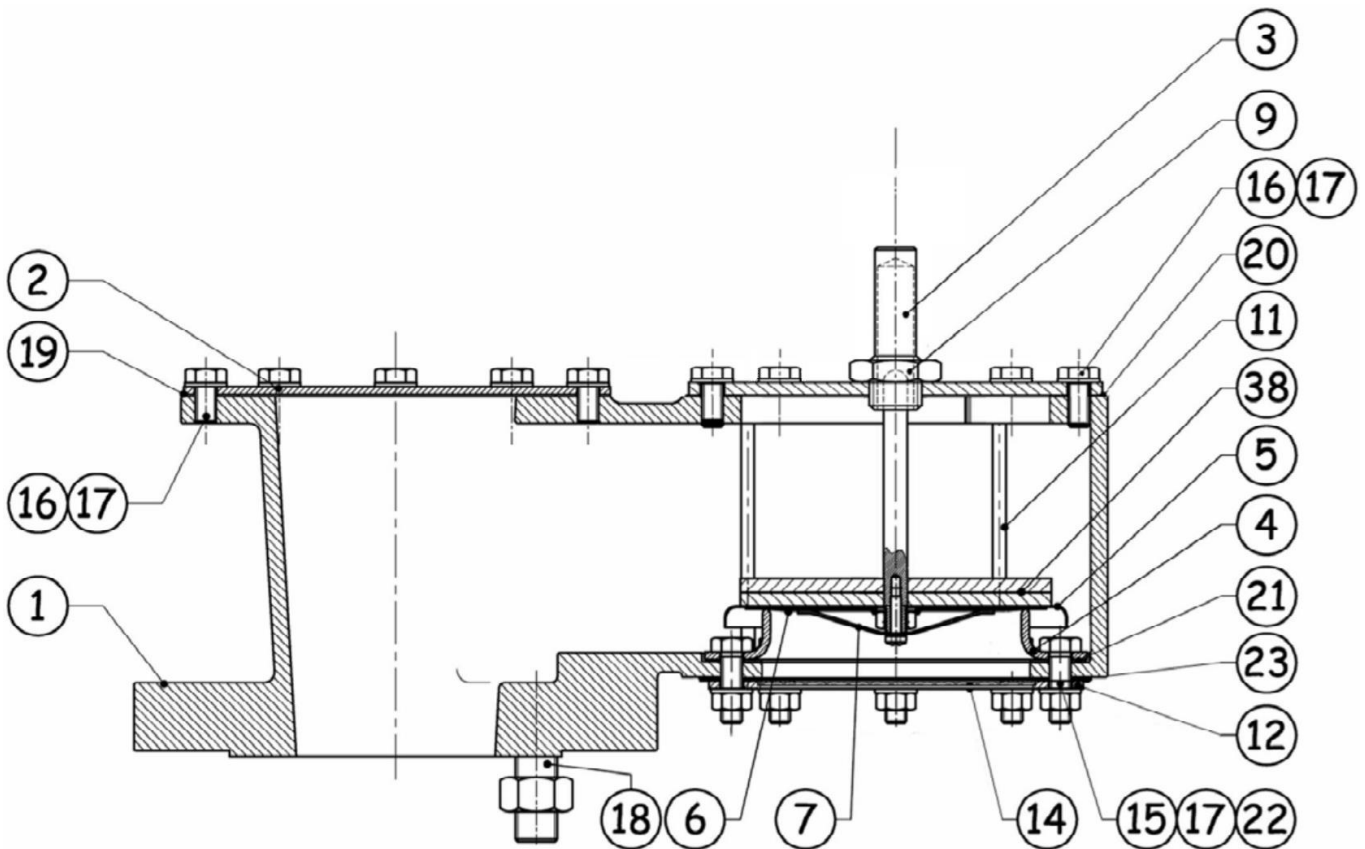
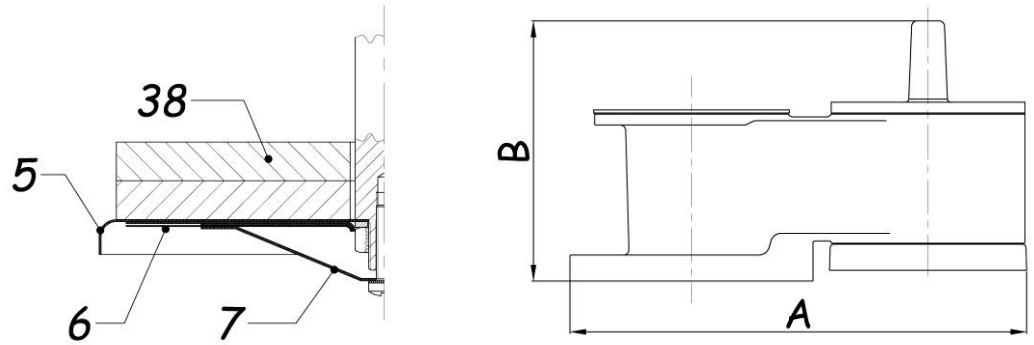
LISTA DE MATERIALES / MATERIALS AND PARTS LIST

| N° NO. | DESCRIPCIÓN DESCRIPTION | MATERIAL MATERIALS |
|--------|-----------------------------------|-----------------------|
| 1 | CUERPO BODY | CF8M |
| 2 | CAPERUZA PRESIÓN PRESSURE HOOD | AISI 316L |
| 3 | TAPA VACÍO VACUUM COVER | AISI 316L |
| 4 | ASIENTO VACÍO VACUUM SEAT | AISI 316L |
| 5 | CLAPETA PALLET | AISI 316L |
| 6 | DIAFRAGMA DIAPHRAGM | P.T.F.E. + F.E.P. |
| 7 | DEFLECTOR DEFLECTOR | AISI 316L |
| 8 | VÁSTAGO PRESIÓN PRESSURE STEM | AISI 316L |
| 9 | VÁSTAGO VACÍO VACUUM STEM | AISI 316L |

| N° NO. | DESCRIPCIÓN DESCRIPTION | MATERIAL MATERIALS |
|--------|-------------------------------------|-----------------------|
| 10 | GUÍA PRESIÓN PRESSURE GUIDE | AISI 316L |
| 11 | GUÍA VACÍO VACUUM GUIDE | AISI 316L |
| 12 | VIERTEAGUAS WATER DRIP | AISI 316L |
| 13 | MALLA DE PRESIÓN PRESSURE SCREEN | AISI 316L |
| 14 | MALLA DE VACÍO VACUUM SCREEN | AISI 316L |
| 15 | TUERCA HEXAGONAL HEXAGONAL NUT | AISI 316L |
| 16 | TORNILLO SCREW | AISI 316L |
| 17 | ARANDELA WASHER | AISI 316L |
| 18 | EJE ROSCADO STUD BOLT | AISI 316L |

| N° NO. | DESCRIPCIÓN DESCRIPTION | MATERIAL MATERIALS |
|--------|----------------------------------|--|
| 19 | JUNTA GASKET | EXPANDED GRAPHITE GRAFITO EXPANDIDO |
| 20 | JUNTA GASKET | EXPANDED GRAPHITE GRAFITO EXPANDIDO |
| 21 | JUNTA GASKET | EXPANDED GRAPHITE GRAFITO EXPANDIDO |
| 22 | TORNILLO SCREW | AISI 304 |
| 23 | JUNTA GASKET | EXPANDED GRAPHITE GRAFITO EXPANDIDO |
| 25 | ASINETO PRESIÓN PRESSURE SEAT | AISI 316L |
| 38 | CONTRAPESOS LOADING WEIGHTS | PLOMO / AISI 316L LEAD / AISI 316L |

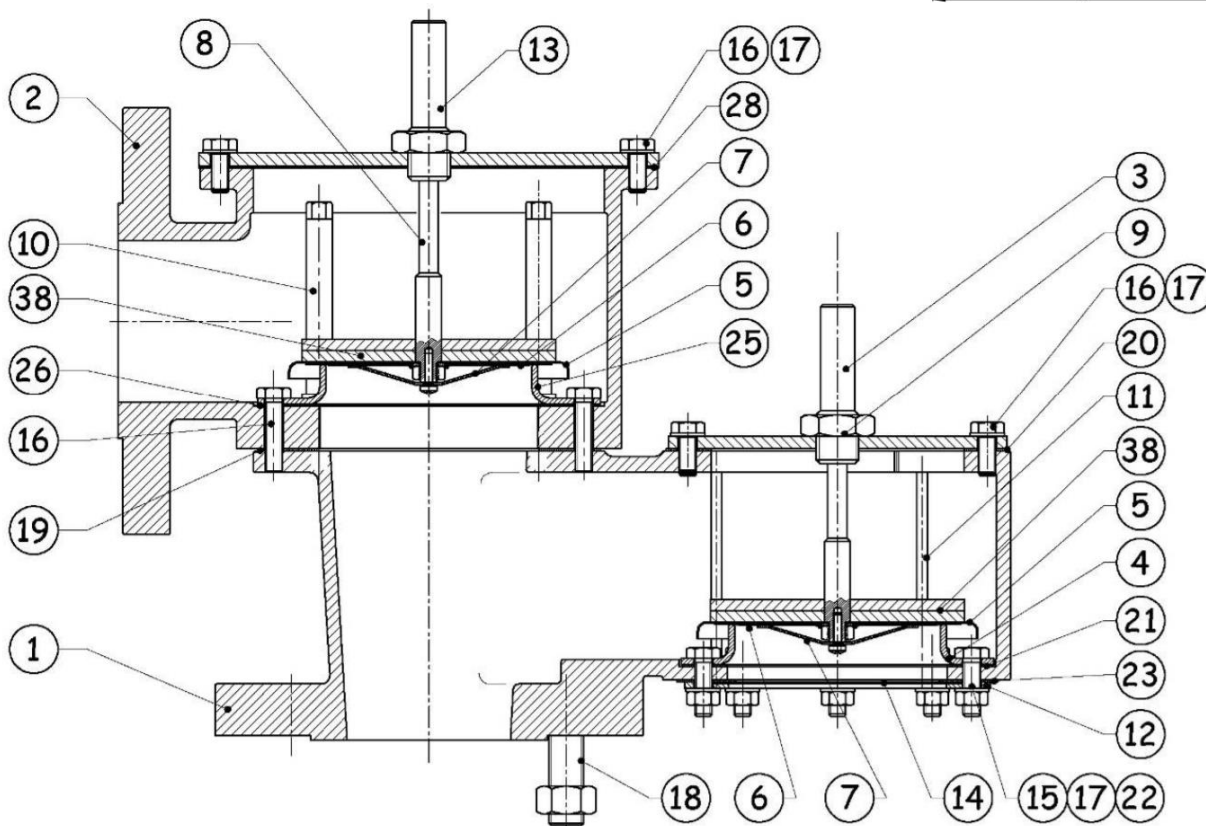
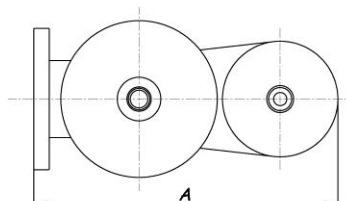
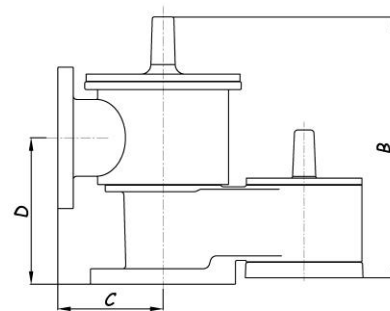
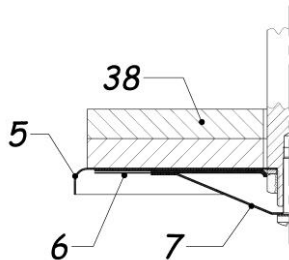
| TAMAÑO SIZE | A | B |
|----------------|-----|-----|
| DN | mm | mm |
| 2" | 315 | 180 |
| 3" | 370 | 215 |
| 4" | 425 | 245 |



LISTADE MATERIALES / MATERIALS AND PARTS LIST

| N° NO. | DESCRIPCIÓN DESCRIPTION | MATERIAL MATERIALS | N° NO. | DESCRIPCIÓN DESCRIPTION | MATERIAL MATERIALS | N° NO. | DESCRIPCIÓN DESCRIPTION | MATERIAL MATERIALS |
|--------|---------------------------|--------------------|--------|--------------------------------|--------------------|--------|-----------------------------|-------------------------------------|
| 1 | CUERPO BODY | CF8M | 9 | VÁSTAGO VACÍO VACUUM STEM | AISI 316 | 18 | EJE ROSCADO STUD BOLT | AISI 304 |
| 2 | TAPA COVER | AISI 316 | 11 | GUIA VACÍO VACUUM GUIDE | AISI 316 | 19 | JUNTA GASKET | GRAFITO EXPANDIDO EXPANDED GRAPHITE |
| 3 | TAPA VACÍO VACUUM COVER | AISI 316 | 12 | VIERTEGUAS WATER DRIP | AISI 316 | 20 | JUNTA GASKET | GRAFITO EXPANDIDO EXPANDED GRAPHITE |
| 4 | ASIENTO VACÍO VACUUM SEAT | AISI 316 | 14 | MALLA VACÍO VACUUM SCREEN | AISI 304 | 21 | JUNTA GASKET | GRAFITO EXPANDIDO EXPANDED GRAPHITE |
| 5 | CLAPETA PALLET | AISI 316 | 15 | TUERCA HEXAGONAL HEXAGONAL NUT | AISI 316 | 22 | TORNILLO SCREW | AISI 316 |
| 6 | DIAFRAGMA DIAPHRAGM | PTFE + FEP | 16 | TORNILLO SCREW | AISI 316 | 23 | JUNTA GASKET | GRAFITO EXPANDIDO EXPANDED GRAPHITE |
| 7 | DEFLECTOR DEFLECTOR | AISI 316 | 17 | ARANDELA WASHER | AISI 316 | 38 | CONTRAPESOS LOADING WEIGHTS | PLOMO / AISI 316 LEAD / AISI 316 |

| TAMAÑO SIZE | A | B | C | D |
|----------------|-----|-----|-----|-----|
| DN | mm | mm | mm | mm |
| 2" | 360 | 290 | 130 | 177 |
| 3" | 415 | 352 | 145 | 200 |
| 4" | 470 | 416 | 160 | 231 |



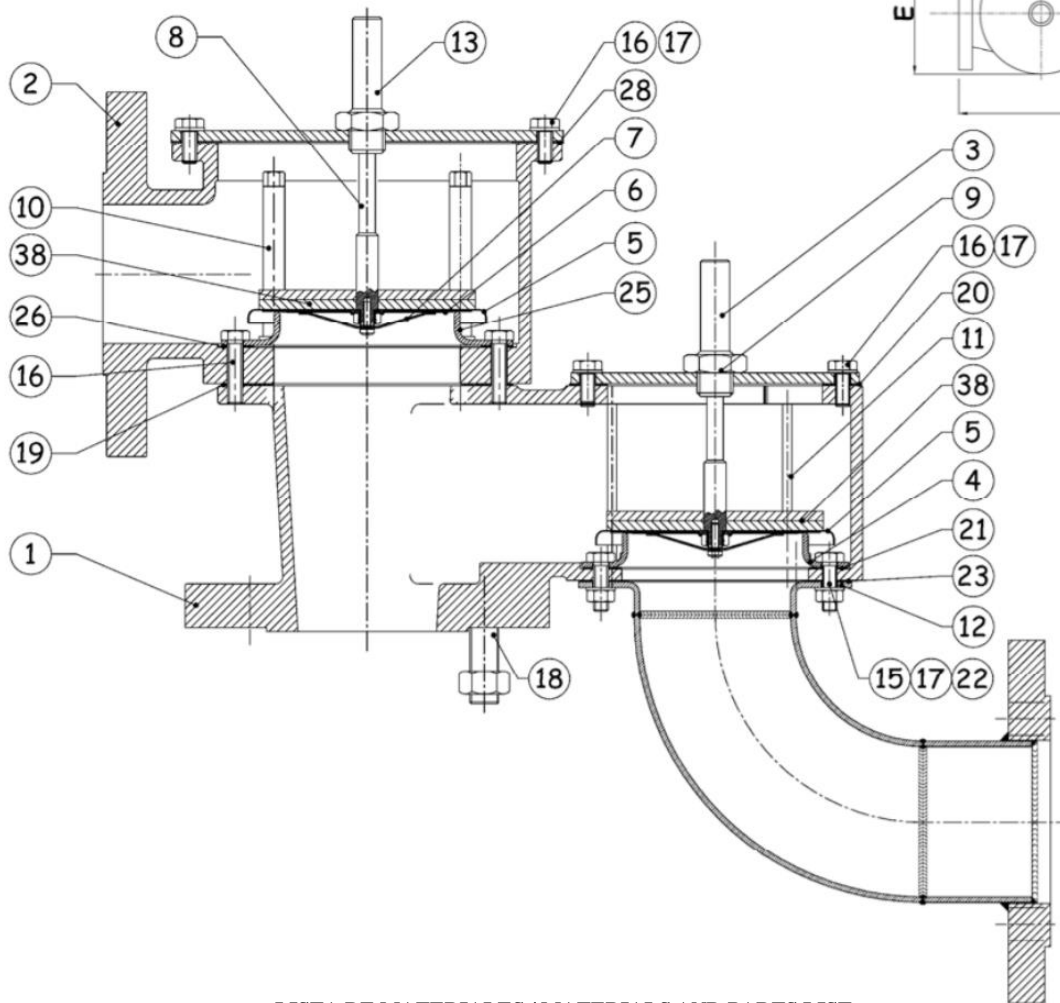
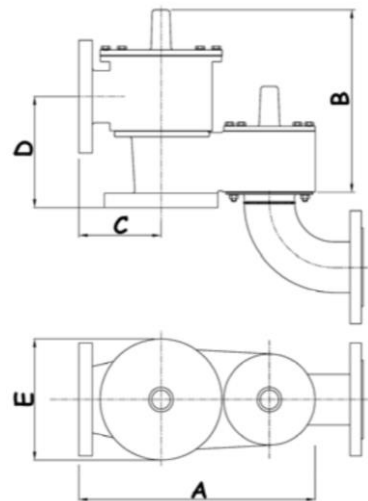
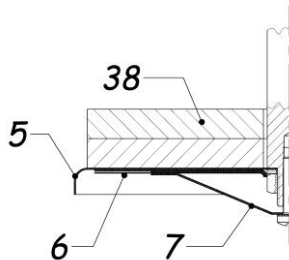
LISTA DE MATERIALES / MATERIALS AND PARTS LIST

| N° NO. | DESCRIPCIÓN DESCRIPTION | MATERIAL MATERIALS |
|--------|---|--------------------|
| 1 | CUERPO BODY | CF8M |
| 2 | CONDUCCIÓN DE PRESIÓN PRESSURE CONVEYOR | CF8M |
| 3 | TAPA DE VACÍO VACUUM COVER | AISI316L |
| 4 | ASIENTO PRESIÓN VACUUM SEAT | AISI316L |
| 5 | CLAPETA PALLET | AISI316L |
| 6 | DIAFRAGMA DIAPHRAGM | P.T.F.E. + F.E.P. |
| 7 | DEFLECTOR DEFLECTOR | AISI316L |
| 8 | VÁSTAGO PRESIÓN PRESSURE STEM | AISI316L |
| 9 | VÁSTAGO VACÍO VACUUM STEM | AISI316L |

| N° NO. | DESCRIPCIÓN DESCRIPTION | MATERIAL MATERIALS |
|--------|-------------------------------|--------------------|
| 10 | GUIA PRESIÓN PRESSURE GUIDE | AISI316L |
| 11 | GUIA VACÍO VACUUM GUIDE | AISI316L |
| 12 | VIERTEAGUAS WATER DRIP | AISI316L |
| 13 | TAPA PRESIÓN PRESSURE COVER | AISI316L |
| 14 | MALLA VACÍO VACUUM SCREEN | AISI316L |
| 15 | TUERCA HEXAGONAL EXAGONAL NUT | AISI316L |
| 16 | TORNILLO SCREW | AISI316L |
| 17 | ARANDELA WASHER | AISI316L |
| 18 | EJE ROSCADO STUD BOLT | AISI316L |

| N° NO. | DESCRIPCIÓN DESCRIPTION | MATERIAL MATERIALS |
|--------|-------------------------------|-------------------------------------|
| 19 | JUNTA GASKET | GRAFITO EXPANDIDO EXPANDED GRAPHITE |
| 20 | JUNTA GASKET | GRAFITO EXPANDIDO EXPANDED GRAPHITE |
| 21 | JUNTA GASKET | GRAFITO EXPANDIDO EXPANDED GRAPHITE |
| 22 | TORNILLO SCREW | AISI 316 |
| 23 | JUNTA GASKET | GRAFITO EXPANDIDO EXPANDED GRAPHITE |
| 25 | ASIENTO PRESIÓN PRESSURE SEAT | AISI316L |
| 26 | JUNTA GASKET | GRAFITO EXPANDIDO EXPANDED GRAPHITE |
| 28 | JUNTA GASKET | GRAFITO EXPANDIDO EXPANDED GRAPHITE |
| 38 | CONTRAPESOS LOADING WEIGHTS | PLOMO / AISI316L LEAD / AISI316L |

| TAMAÑO SIZE | A | B | C | D | E |
|----------------|-----|-----|-----|-----|-----|
| DN | mm | mm | mm | mm | mm |
| 2" | 360 | 290 | 130 | 177 | 195 |
| 3" | 415 | 352 | 145 | 200 | 215 |
| 4" | 470 | 416 | 160 | 231 | 240 |



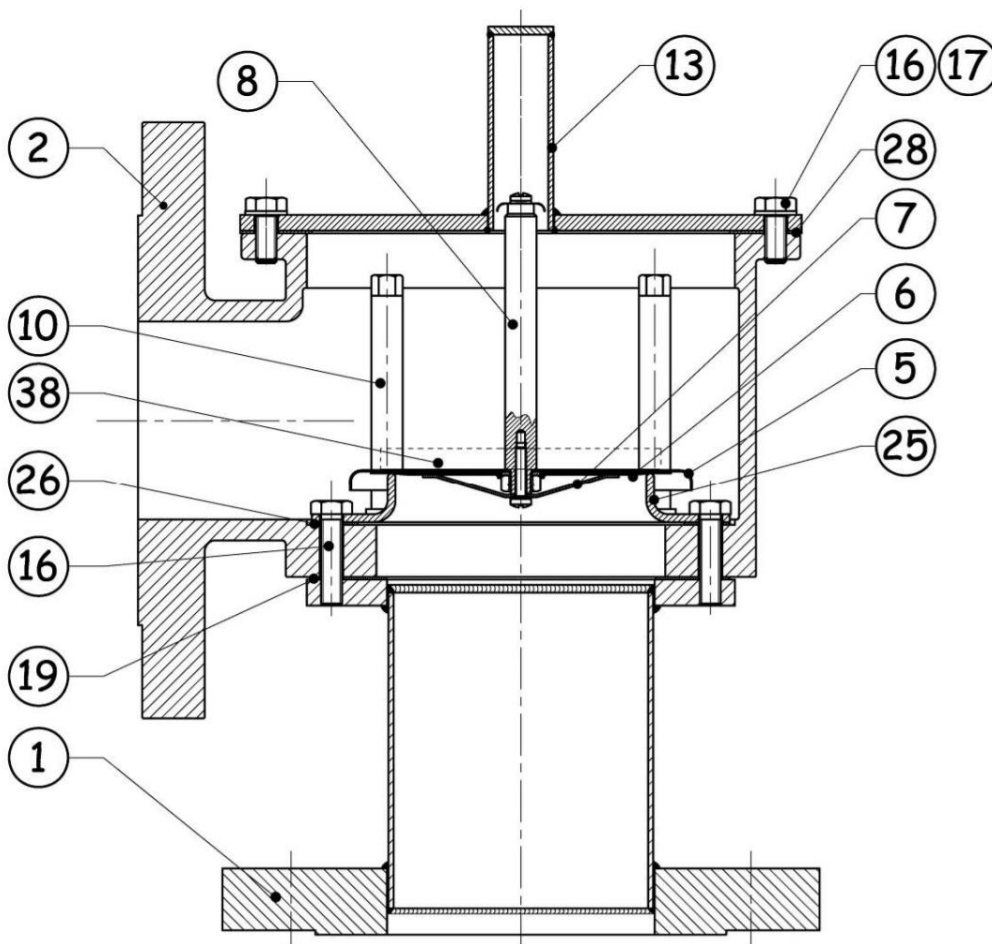
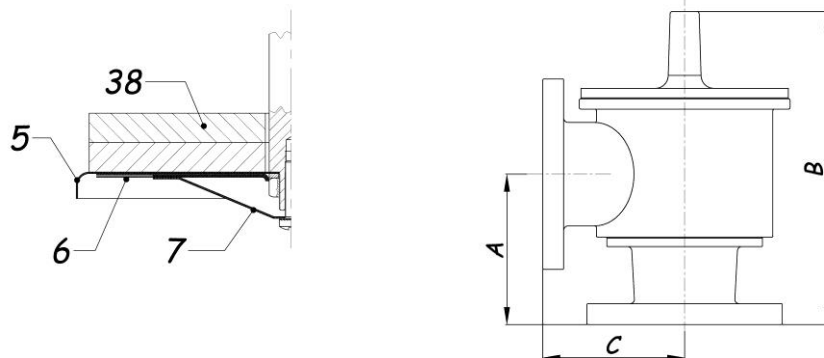
LISTA DE MATERIALES / MATERIALS AND PARTS LIST

| Nº NO. | DESCRIPCIÓN DESCRIPTION | MATERIAL MATERIALS |
|--------|---|--------------------|
| 1 | CUERPO BODY | CF8M |
| 2 | CONDUCCIÓN DE PRESIÓN PRESSURE CONVEYOR | CF8M |
| 3 | TAPA DE VACÍO VACUUM COVER | AISI316L |
| 4 | ASIENTO PRESIÓN VACUUM SEAT | AISI316L |
| 5 | CLAPETA PALLET | AISI316L |
| 6 | DIAFRAGMA DIAPHRAGM | P.T.F.E. + F.E.P. |
| 7 | DEFLECTOR DEFLECTOR | AISI316L |
| 8 | VÁSTAGO PRESIÓN PRESSURE STEM | AISI316L |
| 9 | VÁSTAGO VACÍO VACUUM STEM | AISI316L |

| Nº NO. | DESCRIPCIÓN DESCRIPTION | MATERIAL MATERIALS |
|--------|-------------------------------|--------------------|
| 10 | GUIA PRESIÓN PRESSURE GUIDE | AISI316L |
| 11 | GUIA VACÍO VACUUM GUIDE | AISI316L |
| 12 | VIERTEAGUAS WATER DRIP | AISI316L |
| 13 | TAPA PRESIÓN PRESSURE COVER | AISI316L |
| 14 | MALLA VACÍO VACUUM SCREEN | AISI316L |
| 15 | TUERCA HEXAGONAL EXAGONAL NUT | AISI316L |
| 16 | TORNILLO SCREW | AISI316L |
| 17 | ARANDELA WASHER | AISI316L |
| 18 | EJE ROSCADO STUD BOLT | AISI316L |

| Nº NO. | DESCRIPCIÓN DESCRIPTION | MATERIAL MATERIALS |
|--------|-------------------------------|-------------------------------------|
| 19 | JUNTA GASKET | GRAFITO EXPANDIDO EXPANDED GRAPHITE |
| 20 | JUNTA GASKET | GRAFITO EXPANDIDO EXPANDED GRAPHITE |
| 21 | JUNTA GASKET | GRAFITO EXPANDIDO EXPANDED GRAPHITE |
| 22 | TORNILLO SCREW | AISI 316 |
| 23 | JUNTA GASKET | GRAFITO EXPANDIDO EXPANDED GRAPHITE |
| 25 | ASIENTO PRESIÓN PRESSURE SEAT | AISI316L |
| 26 | JUNTA GASKET | GRAFITO EXPANDIDO EXPANDED GRAPHITE |
| 28 | JUNTA GASKET | GRAFITO EXPANDIDO EXPANDED GRAPHITE |
| 38 | CONTRAPESOS LOADING WEIGHTS | PLOMO / AISI316L LEAD / AISI316L |

| TAMAÑO SIZE | A | B | C |
|----------------|-----|-----|-----|
| DN | mm | mm | mm |
| 2" | 137 | 250 | 130 |
| 3" | 155 | 307 | 145 |
| 4" | 180 | 365 | 160 |



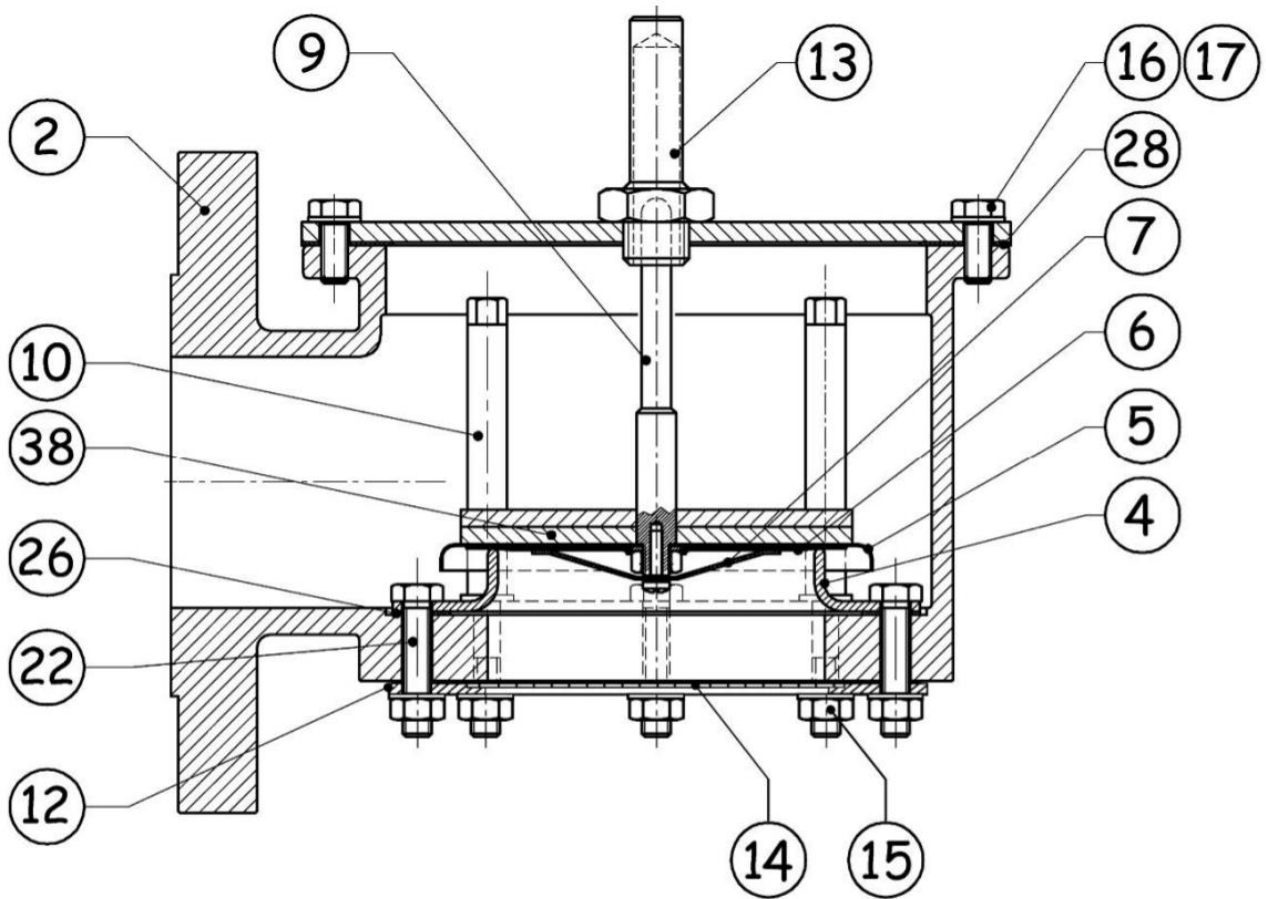
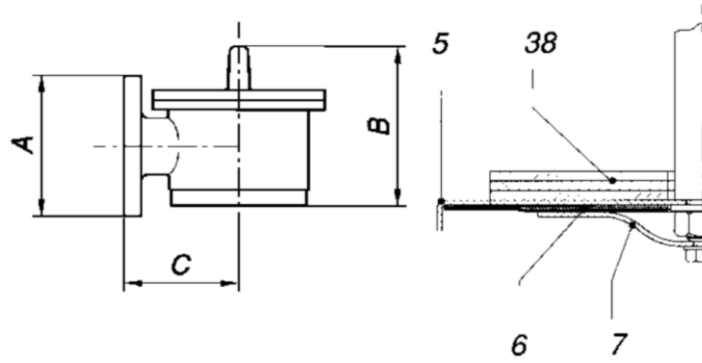
LISTA DE MATERIALES / MATERIALS AND PARTS LIST

| N° NO. | DESCRIPCIÓN DESCRIPTION | MATERIAL MATERIALS |
|--------|--------------------------------------|--------------------|
| 1 | CUERPO BODY | AISI 316 |
| 2 | CONDUCCIÓN PRESIÓN PRESSURE CONVEYOR | CF8M |
| 5 | CLAEPTA PALLET | AISI 316 |
| 6 | DIAFRAGMA DIAPHRAGM | F.E.P. + P.T.F.E. |
| 7 | DEFLECTOR DEFLECTOR | AISI 316 |

| N° NO. | DESCRIPCIÓN DESCRIPTION | MATERIAL MATERIALS |
|--------|----------------------------------|--------------------|
| 8 | VÁSTAGO DE PRESIÓN PRESSURE STEM | AISI 316 |
| 10 | GUIA DE PRESIÓN PRESSURE GUIDE | AISI 304 |
| 13 | TAPA DE PRESIÓN PRESSURE COVER | AISI 316 |
| 16 | TORNILLO SCREW | AISI 316 |
| 17 | ARANDELA WASHER | AISI 316 |

| N° NO. | DESCRIPCIÓN DESCRIPTION | MATERIAL MATERIALS |
|--------|----------------------------------|-------------------------------------|
| 19 | JUNTA GASKET | GRAFITO EXPANDIDO EXPANDED GRAPHITE |
| 25 | ASIENTO DE PRESIÓN PRESSURE SEAT | AISI 304 |
| 26 | JUNTA GASKET | GRAFITO EXPANDIDO EXPANDED GRAPHITE |
| 28 | JUNTA GASKET | GRAFITO EXPANDIDO EXPANDED GRAPHITE |
| 38 | CONTRAPESOS LOADING WEIGHTS | PLOMO / AISI 316 LEAD / AISI 316 |

| TAMAÑO SIZE DN | A mm | B mm | C mm | D mm |
|----------------------|---------|---------|---------|---------|
| 2" | 46 | 181 | 130 | 74 |
| 3" | 95 | 239 | 145 | 96 |
| 4" | 114 | 292 | 160 | 109 |



LISTA DE MATERIALES / MATERIALS AND PARTS LIST

| N° NO. | DESCRIPCIÓN DESCRIPTION | MATERIAL MATERIALS |
|--------|---------------------------------------|-----------------------|
| 2 | CONDUCCIÓN PRESIÓN PRESS. CONVEYOR | CF8M |
| 4 | ASIENTO PRESIÓN VACUUM SEAT | AISI 316L |
| 5 | CLAEPTA PALLET | AISI 316 |
| 6 | DIAPHRAGMA DIAPHRAGM | FEP+P.T.F.E |
| 7 | DEFLECTOR DEFLECTOR | AISI 316 |
| 9 | VÁSTAGO VACÍO VACUUM STEM | AISI 316 |

| N° NO. | DESCRIPCIÓN DESCRIPTION | MATERIAL MATERIALS |
|--------|-----------------------------------|-----------------------|
| 10 | GUIA DE PRESIÓN PRESSURE GUIDE | AISI 316 |
| 12 | VIERTEAGUAS WATER DRIP | AISI 316 |
| 13 | TAPA DE VACÍO VACUUM COVER | AISI 316 |
| 14 | TORNILLO SCREEN | AISI 316 |
| 15 | TUERCA HEXAGONAL HEXAGONAL NUT | AISI 316 |
| 16 | TORNILLO SCREW | AISI 316 |

| N° NO. | DESCRIPCIÓN DESCRIPTION | MATERIAL MATERIALS |
|--------|--------------------------------|--|
| 17 | ARANDELA WASHER | AISI 316 |
| 22 | TORNILLO SCREW | AISI 316 |
| 26 | JUNTA GASKET | GRAFITO EXPANDIDO EXPANDED GRAPHITE |
| 28 | JUNTA GASKET | GRAFITO EXPANDIDO EXPANDED GRAPHITE |
| 38 | CONTRAPESOS LOADING WEIGHTS | PLOMO / AISI 316 LEAD / AISI 316 |