

VÁLVULA EN ACERO INOXIDABLE

STAINLESS STEEL VALVES

Gracias a nuestra experiencia en prensa, embutición y soldadura producimos durante mas de 20 años estas válvulas en acero inoxidable para trabajar en condiciones corrosivas severas. Se suministran con el cuerpo chorreado de arena para un buen acabado. Como opción se pueden suministrar con camisa de vapor para cuando los vapores de proceso polimerizan en condiciones atmosféricas. En base a este diseño, también se pueden suministrar en materiales plásticos como PVC y PP en tamaños de hasta DN100.

Disponibile en siete tamaños de 2" a 12" con bridas de cualquier estandar.

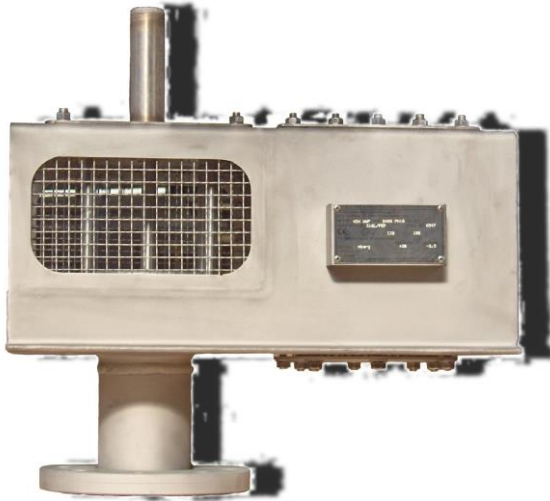
Tarados: en presión entre +22 y +1000 mmH₂O y en vacío entre -22 y -500 mmH₂O. Para otros tarados consultar.

Thanks to our experience in working processes like pressing, forming, welding we produce these fabricated stainless steel valves for more than twenty years to perform under severe corrosive conditions. They are supplied with sand-blasted body in order to get a right look. As an option they can be provided with steam jacket where process fluids polymerize at atmospheric conditions. On this design basis we are able to supply valves in plastic materials like PVC and PP until size DN 100.

Available in seven sizes from 2" up to 12" with connections of any standard.

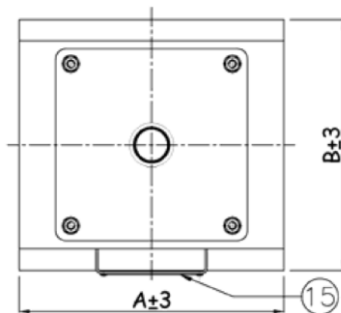
Setting: pressure from +22 up to +1000 mmH₂O. Vacuum from -22 up to -500 mmH₂O. For other settings consult factory.

Design pressure: 1500 mmH₂O.



COSTRUZIONI MECCANICHE LUPI S.r.l.	VALVULA DE SEGURIDAD DE PRESION PRESSURE RELIEF VALVE	Modelo – Model 463
------------------------------------	--	----------------------------------

TAMAÑO SIZE	A	B	C
DN	mm	mm	mm
2"	192	208	365
3"	262	248	465
4"	262	248	465
6"	450	396	625
8"	450	396	625
10"	620	448	914
12"	620	448	914

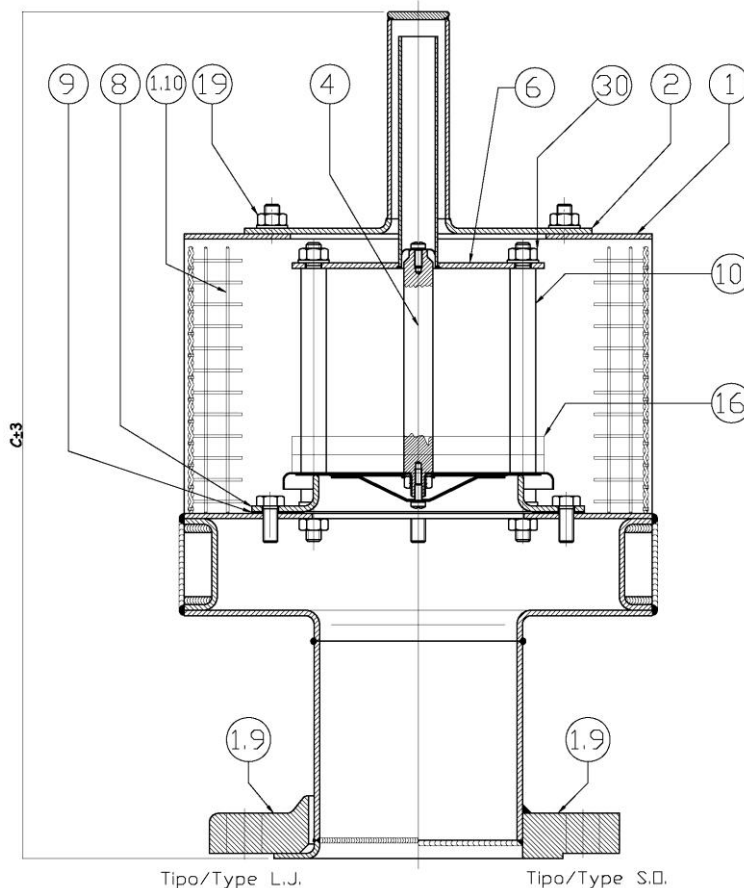


DO NOT OPEN WHEN AN EXPLOSIVE ATMOSPHERE IS PRESENT
 COSTRUZIONI MECCANICHE LUPI SRL
 VIA CANCELLIERA,27 -00040 ARICCIA (ROMA) - ITALY
 MOD.NO. SIZE TAG NO.
 MAT.BODY/TRIM SERIAL NO.

CE Ex II 2 G T=°C
 TECHNICAL FILE N° ATEX/ITA/04/002

SETTING _____ PRESSURE _____ VACUUM _____
 CAPACITY _____
 RELIEVING _____

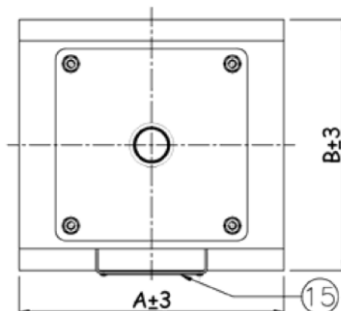
NON APRIRE QUANDO E' PRESENTE UNA ATMOSFERA ESPLOSIVA



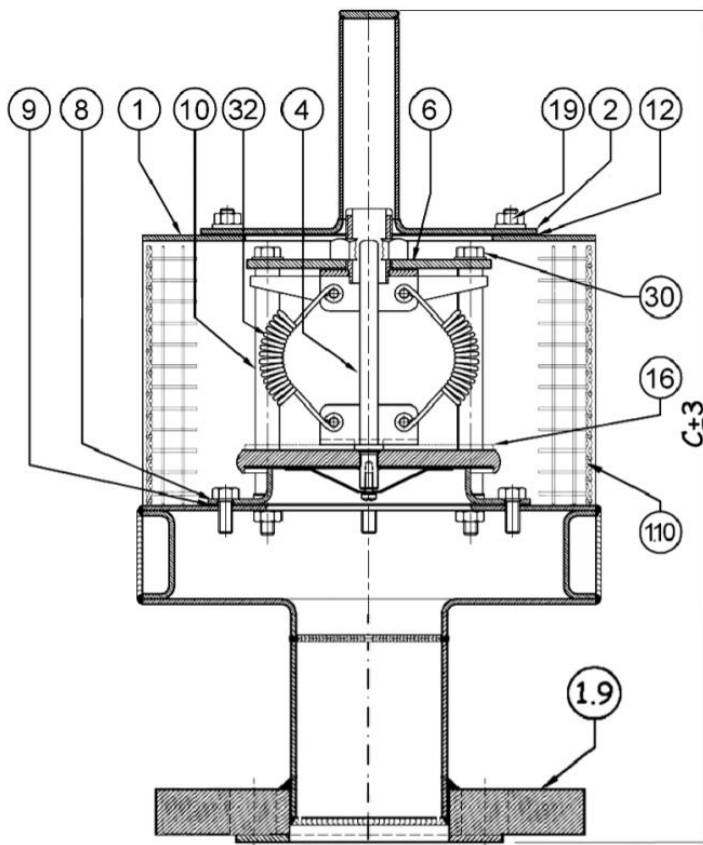
LISTA DE MATERIALES - PARTS LIST

N. NO.	DESCRIPCIÓN - DESCRIPTION	COD. IDENT. TYPE CODE	MATERIALES – MATERIALS	
			VF	WF
1	Cuerpo- Body Valve	463-01-00A	AISI 304	AISI 316L
1.9	Brida - Flange	454-01-09A	Acero al carbono zincado en caliente - Hot Dip Galv. Carb. Steel	AISI 316L
1.10	Malla - Screen	463-01-04A	AISI 304	AISI 316L
2	Tapa lado presión - Pressure Side Cover	454-02-00A	AISI 304	AISI 316L
4	Clapeta de presión - Pressure Side Cap	454-04-00A	AISI 316 + P.T.F.E.+ F.E.P.	
6	Cruceta de presión - Pressure Side Cross	454-06-00A	AISI 304	AISI 316
8	Asiento - Seat	454-08-00A	AISI 304	AISI 316
9	Junta del asiento - Seat Gasket	454-09-00A	Grafito expandido - Expanded Graphite	
10	Guia clapeta de presión - Pressure Side Cap Guide	454-10-00A	AISI 304	AISI 316
15	Chapa - Nameplate	454-15-00A	AISI 304	AISI 316
16	Contrapesos - Loading Weight		Plomo - Lead	Plomo - Lead / AISI 316L
19	Tuerca M8 - M8 Nut		AISI 304	AISI 316
30	Tuerca - Nut M6: 2" --- M8: 3" - 4" --- M10: 6" - 8" - 10" - 12"		AISI 304	AISI 316

TAMAÑO SIZE	A	B	C
DN	mm	mm	mm
2"	192	208	465
3"	262	248	469
4"	262	248	469
6"	450	396	624
8"	450	396	624
10"	620	448	914
12"	620	448	914



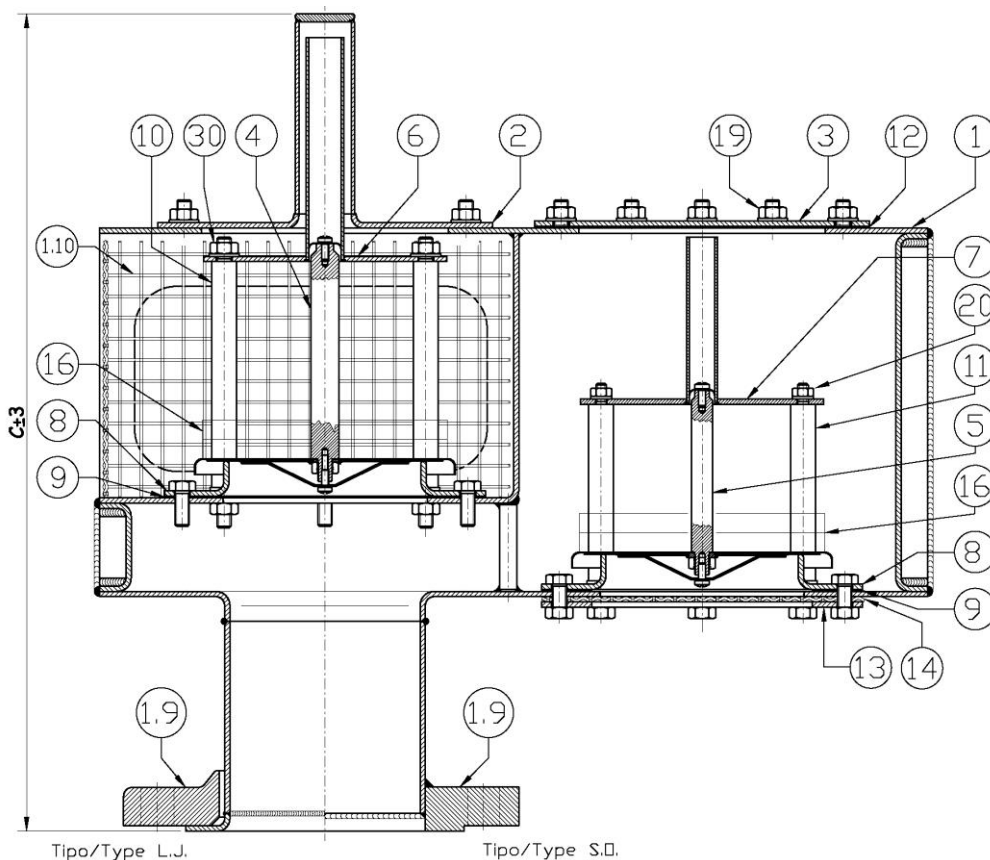
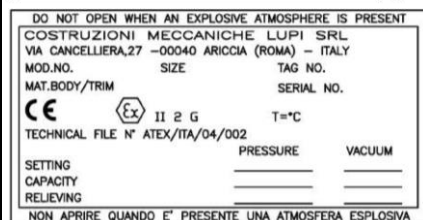
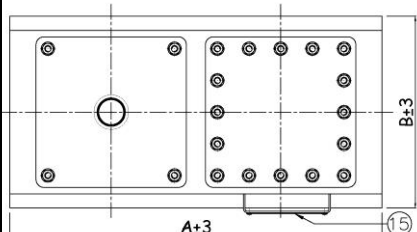
DO NOT OPEN WHEN AN EXPLOSIVE ATMOSPHERE IS PRESENT
 COSTRUZIONI MECCANICHE LUPI SRL
 VIA CANCELLIERA,27 -00040 ARICCIA (ROMA) - ITALY
 MOD.NO. SIZE TAG NO.
 MAT.BODY/TRIM SERIAL NO.
CE **Ex** II 2 G T=°C
 TECHNICAL FILE N° ATEX/ITA/04/002
 SETTING _____ PRESSURE _____
 CAPACITY _____ VACUUM _____
 RELIEVING _____
 NON APRIRE QUANDO E' PRESENTE UNA ATMOSFERA ESPLOSIVA



LISTA DE MATERIALES - PARTS LIST

N. NO.	DESCRIPCIÓN - DESCRIPTION	COD. IDENT. TYPE CODE	MATERIALES - MATERIALS	
			VF	WF
1	Cuerpo- Body Valve	463-01-00A	AISI 304	AISI 316L
1.9	Brida - Flange	454-01-09A	Acero al carbono zincado en caliente - Hot Dip Galv. Carb. Steel	AISI 316L
1.10	Malla - Screen	463-01-04A	AISI 304	AISI 316L
2	Tapa lado presión - Pressure Side Cover	454-02-00A	AISI 304	AISI 316L
4	Clapeta de presión - Pressure Side Cap	454-04-00A	AISI 316 + P.T.F.E.+ F.E.P.	
6	Cruceta de presión - Pressure Side Cross	454-06-00A	AISI 304	AISI 316
8	Asiento - Seat	454-08-00A	AISI 304	AISI 316
9	Junta del asiento - Seat Gasket	454-09-00A	Grafito expandido - Expanded Graphite	
10	Guia clapeta de presión - Pressure Side Cap Guide	454-10-00A	AISI 304	AISI 316
15	Chapa - Nameplate	454-15-00A	AISI 304	AISI 316
16	Contrapesos - Loading Weight		Plomo - Lead	Plomo - Lead / AISI 316L
19	Tuerca M8 - M8 Nut		AISI 304	AISI 316
30	Tuerca - Nut M6: 2" --- M8: 3" - 4" --- M10: 6" - 8" - 10" - 12"		AISI 304	AISI 316
32	Muelle - Spring			AISI 316

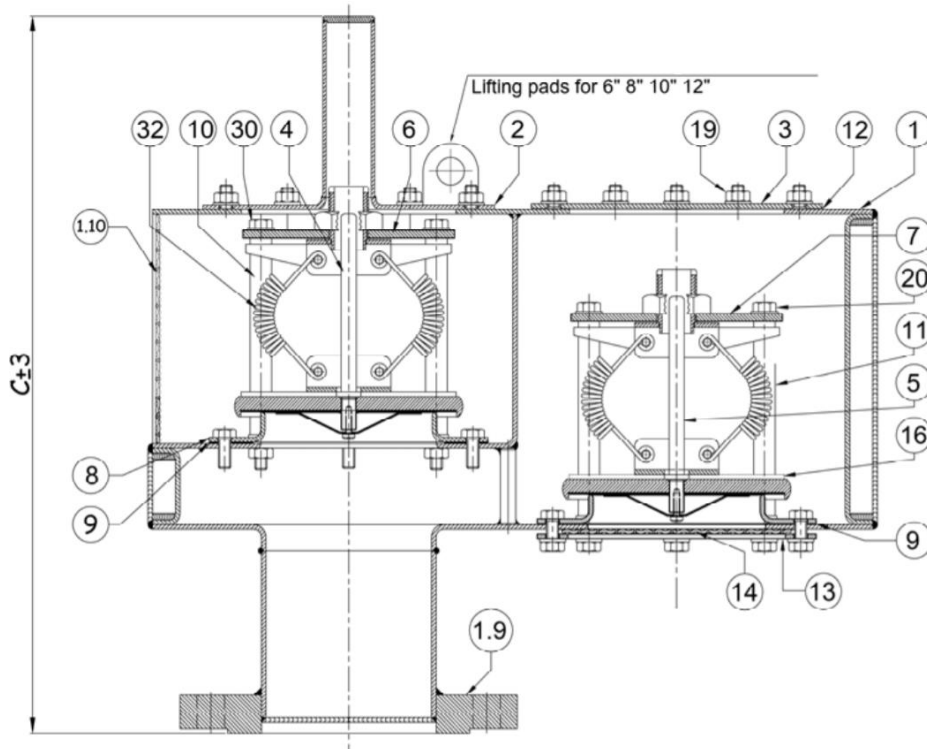
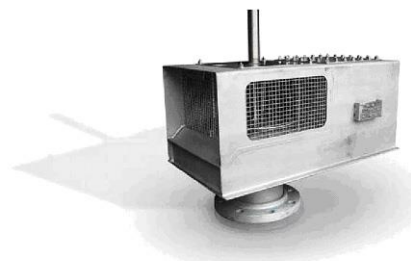
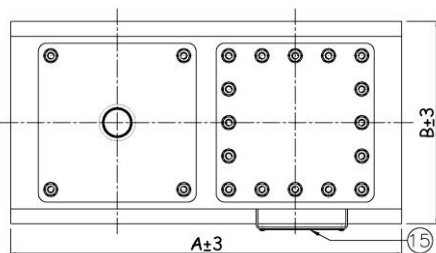
TAMAÑO SIZE	A	B	C
DN	mm	mm	mm
2"	345	208	365
3"	476	248	465
4"	476	248	465
6"	716	396	625
8"	716	396	625
10"	988	448	914
12"	988	448	914



LISTA COMPONENTES - PARTS LIST

N. NO.	DESCRIPCIÓN - DESCRIPTION	COD. IDENT. TYPE CODE	MATERIAL - MATERIALS	
			VF	WF
1	Cuerpo - Body Valve	454-01-00A	AISI 304	AISI 316L
1.9	Brida - Flange	454-01-09A	Acero carb. Zincado en caliente - Hot Dip Galv. Carb. Steel	AISI 316L
1.10	Malla de presión - Pressure Screen	454-01-10A	AISI 304	AISI 316L
2	Tapa de presión - Pressure Side Cover	454-02-00A	AISI 304	AISI 316L
3	Tapa de vacío - Vacuum Side Cover	454-03-00A	AISI 304	AISI 316L
4	Clapeta de presión - Pressure Side Cap	454-04-00A	AISI 316 + P.T.F.E.+ F.E.P.	
5	Clapeta de vacío - Vacuum Side Cap	454-05-00A	AISI 316 + P.T.F.E.+ F.E.P.	
6	Cruceta de presión - Pressure Side Cross	454-06-00A	AISI 304	AISI 316
7	Cruceta de vacío - Vacuum Side Cross	454-07-00A	AISI 304	AISI 316
8	Asineto - Seat	454-08-00A	AISI 304	AISI 316
9	Junta de asiento - Seat Gasket	454-09-00A	Grafito expandido - Expanded Graphite	
10	Guía de presión - Pressure Side Cap Guide	454-10-00A	AISI 304	AISI 316
11	Guía de vacío - Vacuum Side Cap Guide	454-11-00A	AISI 304	AISI 316
12	Junta de la tapa - Vacuum Cover Gasket	454-12-00A	Grafito expandido - Expanded Graphite	
13	Reten de malla - Screen retainer	454-13-00A	AISI 304	AISI 316
14	Malla de vacío - Vacuum Screen	454-14-00A	AISI 304	AISI 316L
15	Chapa - Nameplate	454-15-00A	AISI 304	AISI 316
16	Contrapesos - Loading Weight		Plomo - Lead	Plomo - Lead / AISI 316
19	Tuerca M8 - M8 Nut		AISI 304	AISI 316
20	Tuerca - Nut M6: 2" - 3" - 4" --- M8: 6" - 8" - 10" - 12"		AISI 304	AISI 316
30	Tuerca - Nut M6: 2" --- M8: 3" - 4" --- M10: 6" - 8" - 10" - 12"		AISI 304	AISI 316

TAMAÑO SIZE	A	B	C
DN	mm	mm	mm
2"	345	208	465
3"	476	248	469
4"	476	248	469
6"	716	396	624
8"	716	396	624
10"	988	448	914
12"	988	448	914



DO NOT OPEN WHEN AN EXPLOSIVE ATMOSPHERE IS PRESENT
COSTRUZIONI MECCANICHE LUPI SRL
VIA CANCELLIERA, 27 - 00040 ARICCIA (ROMA) - ITALY
MOD. NO. SIZE TAG NO.
MAT. BODY/TRIM SERIAL NO.

CE Ex II 2 G 2B T=180°C

TECHNICAL FILE N° ATEX/11A/04/002

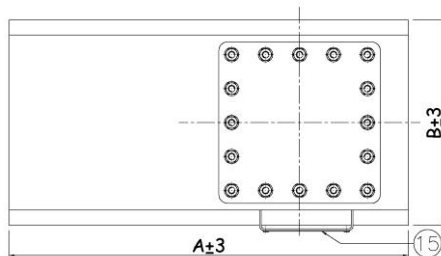
SETTING	PRESSURE	VACUUM
CAPACITY		
RELIEVING		

NON APRIRE QUANDO E' PRESENTE UNA ATMOSPHERA ESPLOSIVA

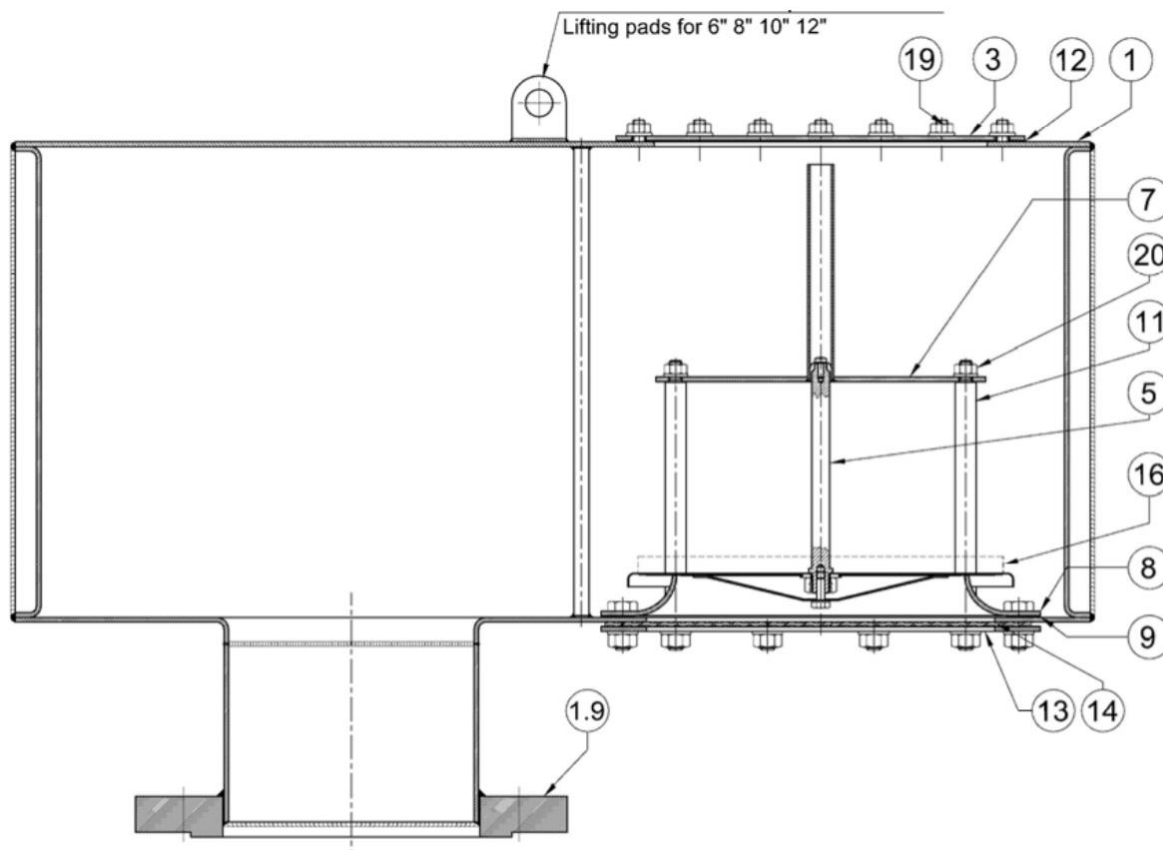
LISTA COMPONENTES - PARTS LIST

N. NO.	DESCRIPCIÓN - DESCRIPTION	COD. IDENT. TYPE CODE	MATERIAL - MATERIALS
1	Cuerpo - Body Valve	454-01-00A	AISI 316L
1.9	Brida - Flange	454-01-09A	AISI 316L
1.10	Malla de presión - Pressure Screen	454-01-10A	AISI 316L
2	Tapa de presión - Pressure Side Cover	454-02-00A	AISI 316L
3	Tapa de vacío - Vacuum Side Cover	454-03-00A	AISI 316L
4	Clapeta de presión - Pressure Side Cap	454-04-00A	AISI 316 + P.T.F.E.+ F.E.P.
5	Clapeta de vacío - Vacuum Side Cap	454-05-00A	AISI 316 + P.T.F.E.+ F.E.P.
6	Cruceta de presión - Pressure Side Cross	454-06-00A	AISI 316
7	Cruceta de vacío - Vacuum Side Cross	454-07-00A	AISI 316
8	Asineto - Seat	454-08-00A	AISI 316
9	Junta de asiento - Seat Gasket	454-09-00A	Grafito expandido - Expanded Graphite
10	Guía de presión - Pressure Side Cap Guide	454-10-00A	AISI 316
11	Guía de vacío - Vacuum Side Cap Guide	454-11-00A	AISI 316
12	Junta de la tapa - Vacuum Cover Gasket	454-12-00A	Grafito expandido - Expanded Graphite
13	Reten de malla - Screen retainer	454-13-00A	AISI 316
14	Malla de vacío - Vacuum Screen	454-14-00A	AISI 316L
15	Chapa - Nameplate	454-15-00A	AISI 316
16	Contrapesos - Loading Weight		Plomo - Lead / AISI 316L
19	Tuerca M8 - M8 Nut		AISI 316
20	Tuerca - Nut M6: 2" - 3" - 4" --- M8: 6" - 8" - 10" - 12"		AISI 316
30	Tuerca - Nut M6: 2" --- M8: 3" - 4" --- M10: 6" - 8" - 10" - 12"		AISI 316
32	Muelle - Spring		AISI 316

TAMAÑO SIZE	A	B	C
DN	mm	mm	mm
2"	345	208	283
3"	476	248	342
4"	476	248	342
6"	716	396	459
8"	716	396	459
10"	988	448	681
12"	988	448	681



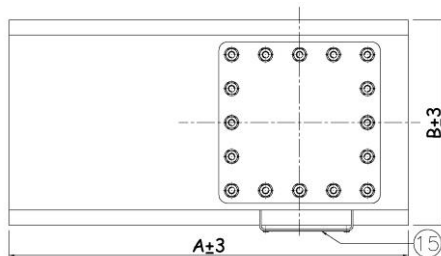
DO NOT OPEN WHEN AN EXPLOSIVE ATMOSPHERE IS PRESENT
 COSTRUZIONI MECCANICHE LUPI SRL
 VIA CANCELLIERA, 27 - 00040 ARICCIA (ROMA) - ITALY
 MOD. NO. SIZE TAG NO.
 MAT. BODY/TRIM SERIAL NO.
 CE Ex II 2 G T=°C
 TECHNICAL FILE N° ATEX/ITA/04/002
 PRESSURE VACUUM
 SETTING _____
 CAPACITY _____
 RELIEVING _____
 NON APRIRE QUANDO E' PRESENTE UNA ATMOSPHERA ESPLOSIVA



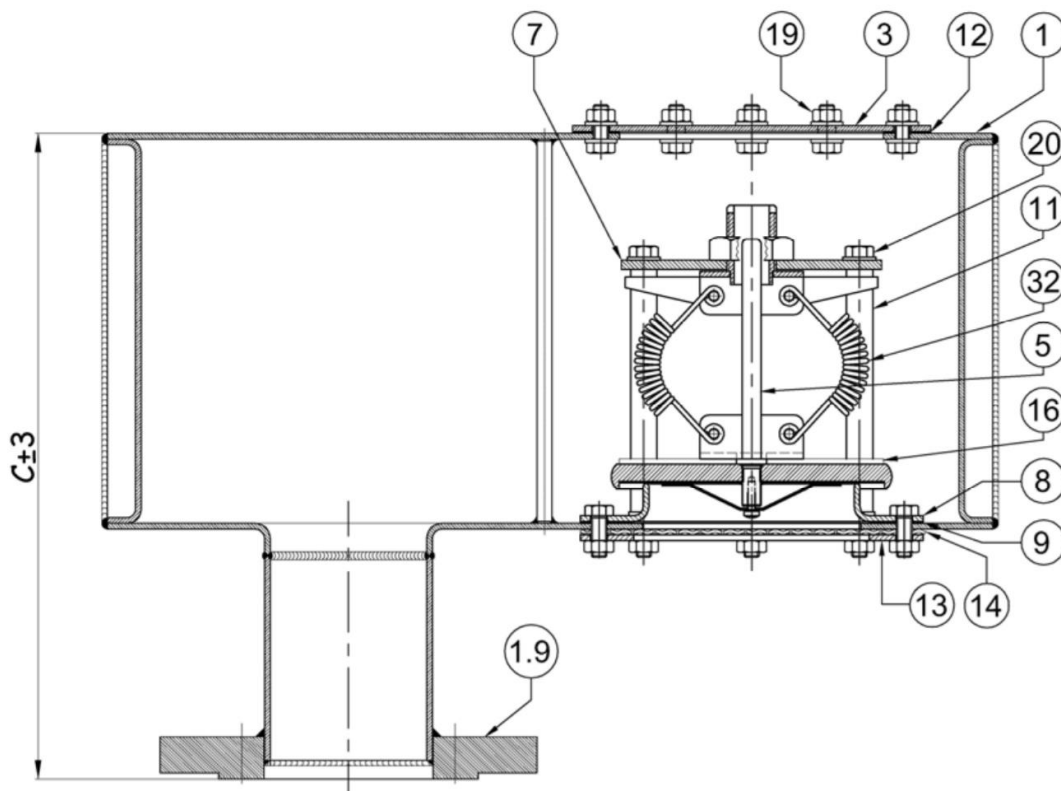
LISTA DE MATERIALES - PARTS LIST

N. NO.	DESCRIPCIÓN - DESCRIPTION	COD. IDENT. TYPE CODE	MATERIAL - MATERIALS	
			VF	WF
1	Cuerpo - Body Valve	456-01-00A	AISI 304	AISI 316L
1.9	Brida - Flange	454-01-09A	Acero al carbono zincado en caliente - Hot Dip Galv. Carb. Steel	AISI 316L
3	Tapa de vacío - Vacuum Side Cover	454-03-00A	AISI 304	AISI 316L
5	Clapeta de vacío - Vacuum Side Cap	454-05-00A	AISI 316 + P.T.F.E.+ F.E.P.	
7	Cruceta de vacío - Vacuum Side Cross	454-07-00A	AISI 304	AISI 316
8	Asiento - Seat	454-08-00A	AISI 304	AISI 316
9	Junta del asiento - Seat Gasket	454-09-00A	Grafito expandido - Expanded Graphite	
11	Guía de vacío - Vacuum Side Cap Guide	454-11-00A	AISI 304	AISI 316
12	Junta tapa de vacío - Vacuum Cover Gasket	454-12-00A	Grafito expandido - Expanded Graphite	
13	Reten de malla - Screen Retainer	454-13-00A	AISI 304	AISI 316
14	Malla de vacío - Vacuum Screen	454-14-00A	AISI 304	AISI 316L
15	Chapa - Nameplate	454-15-00A	AISI 304	AISI 316
16	Contrapesos - Loading Weight		Plomo - Lead	Plomo - Lead / AISI 316L
19	Tuerca M8 - M8 Nut		AISI 304	AISI 316
20	Tuerca - Nut M6: 2" - 3" - 4" --- M8: 6" - 8" - 10" - 12"		AISI 304	AISI 316

TAMAÑO SIZE	A	B	C
DN	mm	mm	mm
2"	345	208	283
3"	476	248	342
4"	476	248	342
6"	716	396	459
8"	716	396	459
10"	988	448	681
12"	988	448	681



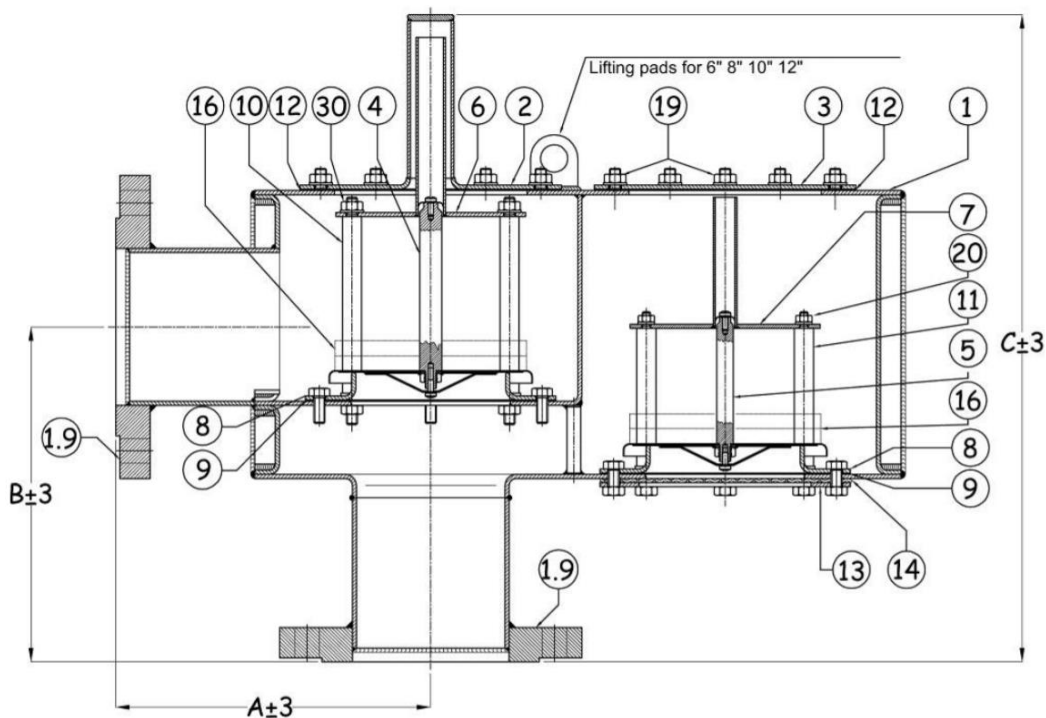
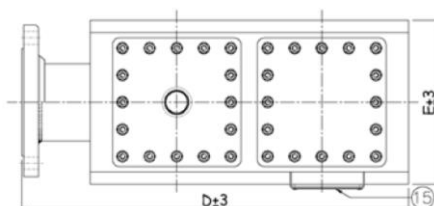
DO NOT OPEN WHEN AN EXPLOSIVE ATMOSPHERE IS PRESENT
 COSTRUZIONI MECCANICHE LUPI SRL
 VIA CANCELLIERA,27 -00040 ARICCIA (ROMA) - ITALY
 MOD.NO. SIZE TAG NO.
 MAT.BODY/TRIM SERIAL NO.
 CE Ex II 2 G T=°C
 TECHNICAL FILE N° ATEX/ITA/04/002
 PRESSURE VACUUM
 SETTING _____
 CAPACITY _____
 RELIEVING _____
 NON APRIRE QUANDO E' PRESENTE UNA ATMOSFERA ESPLOSIVA



LISTA DE MATERIALES - PARTS LIST

N. NO.	DESCRIPCIÓN - DESCRIPTION	COD. IDENT. TYPE CODE	MATERIAL - MATERIALS	
			VF	WF
1	Cuerpo - Body Valve	456-01-00A	AISI 304	AISI 316L
1.9	Brida - Flange	454-01-09A	Acero al carbono zincado en caliente - Hot Dip Galv. Carb. Steel	AISI 316
3	Tapa de vacío - Vacuum Side Cover	454-03-00A	AISI 304	AISI 316L
5	Clapeta de vacío - Vacuum Side Cap	454-05-00A	AISI 316 + P.T.F.E.+ F.E.P.	
7	Cruceta de vacío - Vacuum Side Cross	454-07-00A	AISI 304	AISI 316
8	Asiento - Seat	454-08-00A	AISI 304	AISI 316
9	Junta del asiento - Seat Gasket	454-09-00A	Grafito expandido - Expanded Graphite	
11	Guía de vacío - Vacuum Side Cap Guide	454-11-00A	AISI 304	AISI 316
12	Junta tapa de vacío - Vacuum Cover Gasket	454-12-00A	Grafito expandido - Expanded Graphite	
13	Reten de malla - Screen Retainer	454-13-00A	AISI 304	AISI 316
14	Malla de vacío - Vacuum Screen	454-14-00A	AISI 304	AISI 316L
15	Chapa - Nameplate	454-15-00A	AISI 304	AISI 316
16	Contrapesos - Loading Weight		Plomo - Lead	Plomo - Lead / AISI 316
19	Tuerca M8 - M8 Nut		AISI 304	AISI 316
20	Tuerca - Nut M6: 2" - 3" - 4" --- M8: 6" - 8" - 10" - 12"		AISI 304	AISI 316
32	Muelle - Spring			AISI 316

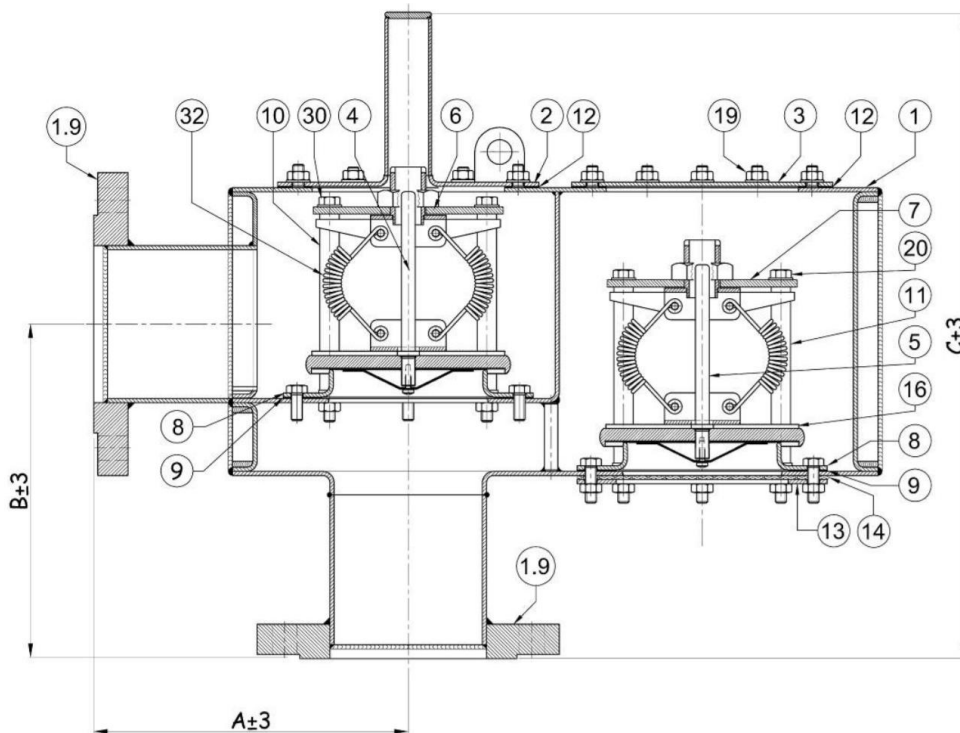
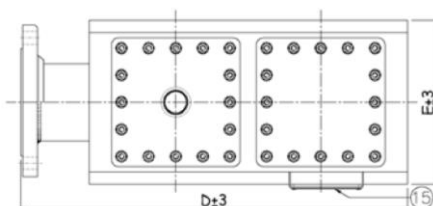
TAMAÑO SIZE	A	B	C	D	E
DN	mm	mm	mm	mm	mm
2"	175	197	365	424	208
3"	229	231	465	574	248
4"	229	243	465	574	248
6"	332	308	625	823	396
8"	332	334	625	823	396
10"	457	476	915	1135	448
12"	457	502	915	1135	448



LISTA DE MATERIALES - PARTS LIST

N. NO.	DESCRIPCIÓN - DESCRIPTION	COD. IDENT. TYPE CODE	MATERIALES - MATERIALS	
			VF	WF
1	Cuerpo - Body Valve	492-01-00A	AISI 304	AISI 316L
1.9	Brida - Flanges	454-01-09A	Acero al carbono zincado en caliente - Hot Dip Galv. Carb. Steel	AISI 316L
2	Tapa lado presión - Pressure Side Cover	492-02-00A	AISI 304	AISI 316L
3	Tapa lado vacío - Vacuum Side Cover	454-03-00A	AISI 304	AISI 316L
4	Clapeta de presión - Pressure Side Cap	454-04-00A	AISI 316 + P.T.F.E.+ F.E.P.	
5	Clapeta de vacío - Vacuum Side Cap	454-05-00A	AISI 316 + P.T.F.E.+ F.E.P.	
6	Cruceta de presión - Pressure Side Cross	454-06-00A	AISI 304	AISI 316
7	Cruceta de vacío - Vacuum Side Cross	454-07-00A	AISI 304	AISI 316
8	Asiento - Seat	454-08-00A	AISI 304	AISI 316
9	Junta del asiento - Seat Gasket	454-09-00A	Grafito Expandido - Expanded Graphite	
10	Guia clapeta de presión. - Pressure Side Cap Guide	454-10-00A	AISI 304	AISI 316
11	Guia clapeta de vacío - Vacuum Side Cap Guide	454-11-00A	AISI 304	AISI 316
12	Junta tapa de vacío - Vacuum Cover Gasket	454-12-00A	Grafito Expandido - Expanded Graphite	
13	Reten de malla - Screen retainer	454-13-00A	AISI 304	AISI 316
14	Malla de vacío - Vacuum Screen	454-14-00A	AISI 304	AISI 316L
15	Chapa - Nameplate	454-15-00A	AISI 304	AISI 316
16	Contrapesos - Loading Weight		Plomo - Lead	Plomo - Lead / AISI 316
19	Tuerca M8 - M8 Nut		AISI 304	AISI 316
20	tuerca - Nut M6: 2" - 3" - 4" --- M8: 6" - 8" - 10" - 12"		AISI 304	AISI 316
30	tuerca - Nut M6: 2" --- M8: 3" - 4" --- M10: 6" - 8" - 10" - 12"		AISI 304	AISI 316

TAMAÑO SIZE	A	B	C	D	E
DN	mm	mm	mm	mm	mm
2"	175	197	365	424	208
3"	229	231	470	574	248
4"	229	231	470	574	248
6"	332	308	625	823	396
8"	332	334	625	823	396
10"	457	476	915	1135	448
12"	457	502	915	1135	448

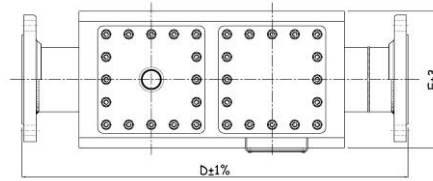


LISTA DE MATERIALES - PARTS LIST

N. NO.	DESCRIPCIÓN - DESCRIPTION	COD. IDENT. TYPE CODE	MATERIALES - MATERIALS	
			VF	WF
1	Cuerpo - Body Valve	492-01-00A	AISI 304	AISI 316L
1.9	Brida - Flanges	454-01-09A	Acero al carbono zincado en caliente - Hot Dip Galv. Carb. Steel	AISI 316L
2	Tapa lado presión - Pressure Side Cover	492-02-00A	AISI 304	AISI 316L
3	Tapa lado vacío - Vacuum Side Cover	454-03-00A	AISI 304	AISI 316L
4	Clapeta de presión - Pressure Side Cap	454-04-00A	AISI 316 + P.T.F.E. + F.E.P.	
5	Clapeta de vacío - Vacuum Side Cap	454-05-00A	AISI 316 + P.T.F.E. + F.E.P.	
6	Cruceta de presión - Pressure Side Cross	454-06-00A	AISI 304	AISI 316
8	Asiento - Seat	454-08-00A	AISI 304	AISI 316
9	Junta del asiento - Seat Gasket	454-09-00A	Grafito Expandido - Expanded Graphite	
10	Guia clapeta de presión. - Pressure Side Cap Guide	454-10-00A	AISI 304	AISI 316
12	Junta tapa de vacío - Vacuum Cover Gasket	454-12-00A	Grafito Expandido - Expanded Graphite	
13	Reten de malla - Screen retainer	454-13-00A	AISI 304	AISI 316
14	Malla de vacío - Vacuum Screen	454-14-00A	AISI 304	AISI 316L
15	Chapa - Nameplate	454-15-00A	AISI 304	AISI 316
16	Contrapesos - Loading Weight		Plomo - Lead	Plomo - Lead / AISI 316L
19	Tuerca M8 - M8 Nut		AISI 304	AISI 316
20	Tuerca - Nut M6: 2" - 3" - 4" --- M8: 6" - 8" - 10" - 12"		AISI 304	AISI 316
32	Muelle - Spring			AISI 316

TAMAÑO SIZE	A	B	C	D	E	F
DN	mm	mm	mm	mm	mm	mm
2"	175	197	421÷427*	474	208	177
3"	229	231	565÷570*	627	248	231
4"	229	243	618÷622*	665	248	281
6"	332	308	873*	978	396	415
8"	332	334	978*	1057	396	516
10"	457	476	1330÷1336*	1398	448	694
12"	457	502	1431÷1450*	1474	448	796

*Brida ANSI / ANSI flange



DO NOT OPEN WHEN AN EXPLOSIVE ATMOSPHERE IS PRESENT

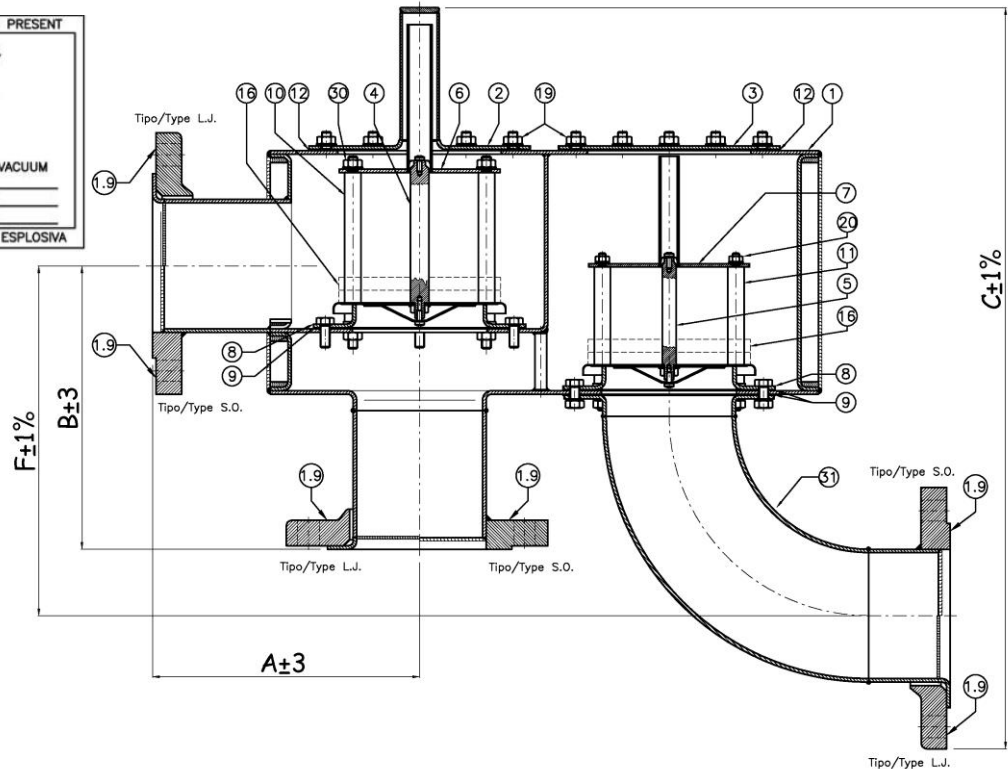
COSTRUZIONI MECCANICHE LUPI SRL
VIA CANCELLIERA,27 -00040 ARICCIA (ROMA) - ITALY

MOD.NO. SIZE TAG NO.
MAT.BODY/TRIM SERIAL NO.

CE II 2 G T=°C
TECHNICAL FILE N° ATEX/ITA/04/002

SETTING CAPACITY RELIEVING
PRESSURE VACUUM

NON APRIRE QUANDO E' PRESENTE UNA ATMOSFERA ESPLOSIVA

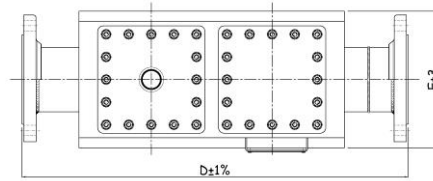


LISTA DE MATERIALES - PARTS LIS

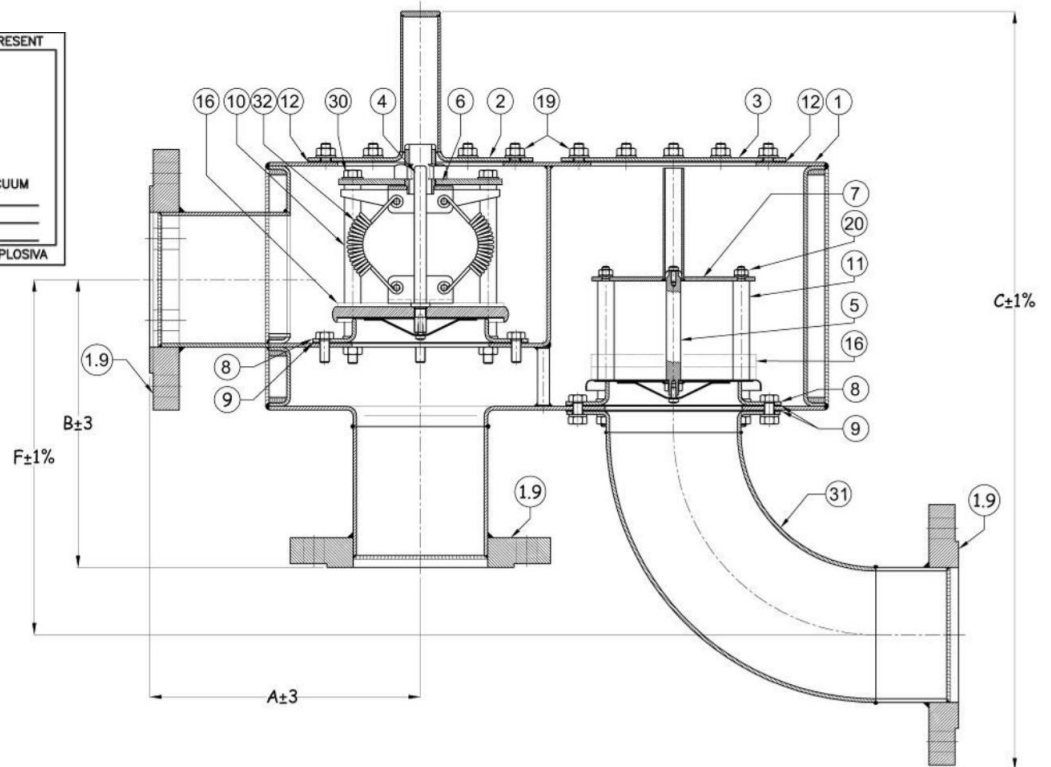
N. NO.	DESCRIPCIÓN - DESCRIPTION	COD. IDENT. TYPE CODE	MATERIALES - MATERIALS	
			VF	WF
1	Cuerpo - Body Valve	492-01-00A	AISI 304	AISI 316L
1.9	Bridas - Flanges	454-01-09A	Acero al carbono zincado en caliente - Hot Dip Galv. Carb. Steel	AISI 316L
2	Tapa lado presión - Pressure Side Cover	492-02-00A	AISI 304	AISI 316L
3	Tapa lado vacío - Vacuum Side Cover	454-03-00A	AISI 304	AISI 316L
4	Clapeta de presión - Pressure Side Cap	454-04-00A	AISI 316 + P.T.F.E.+ F.E.P.	
5	Clapeta de vacío - Vacuum Side Cap	454-05-00A	AISI 316 + P.T.F.E.+ F.E.P.	
6	Cruceta de presión - Pressure Side Cross	454-06-00A	AISI 304	AISI 316
7	Cruceta de vacío - Vacuum Side Cross	454-07-00A	AISI 304	AISI 316
8	Asiento - Seat	454-08-00A	AISI 304	AISI 316
9	Junta del asiento - Seat Gasket	454-09-00A	Grafito expandido - Expanded Graphite	
10	Guía clapeta de presión - Pressure Side Cap Guide	454-10-00A	AISI 304	AISI 316
11	Guías clapeta de vacío - Vacuum Side Cap Guide	454-11-00A	AISI 304	AISI 316
12	Junta Tapa de Vacío - Vacuum Cover Gasket	454-12-00A	Grafito expandido - Expanded Graphite	
15	Chapa - Nameplate	454-15-00A	AISI 304	AISI 316
16	Contrapesos - Loading Weight		Plomo - Lead	Plomo - Lead / AISI 316L
19	Tuerca M8 - M8 Nut		AISI 304	AISI 316
20	Tuerca - Nut M6: 2" - 3" - 4" --- M8: 6" - 8" - 10" - 12"		AISI 304	AISI 316
30	Tuerca - Nut M6: 2" --- M8: 3" - 4" --- M10: 6" - 8" - 10" - 12"		AISI 304	AISI 316
31	Codo embridado - Flanged elbow	464-13-00A	AISI 304	AISI 316L

TAMAÑO SIZE	A	B	C	D	E	F
DN	mm	mm	mm	mm	mm	mm
2"	175	197	421÷427*	474	208	177
3"	229	231	565÷570*	627	248	231
4"	229	243	618÷622*	665	248	281
6"	332	308	873*	978	396	415
8"	332	334	978*	1057	396	516
10"	457	476	1330÷1336*	1398	448	694
12"	457	502	1431÷1450*	1474	448	796

*Brida ANSI / ANSI flange



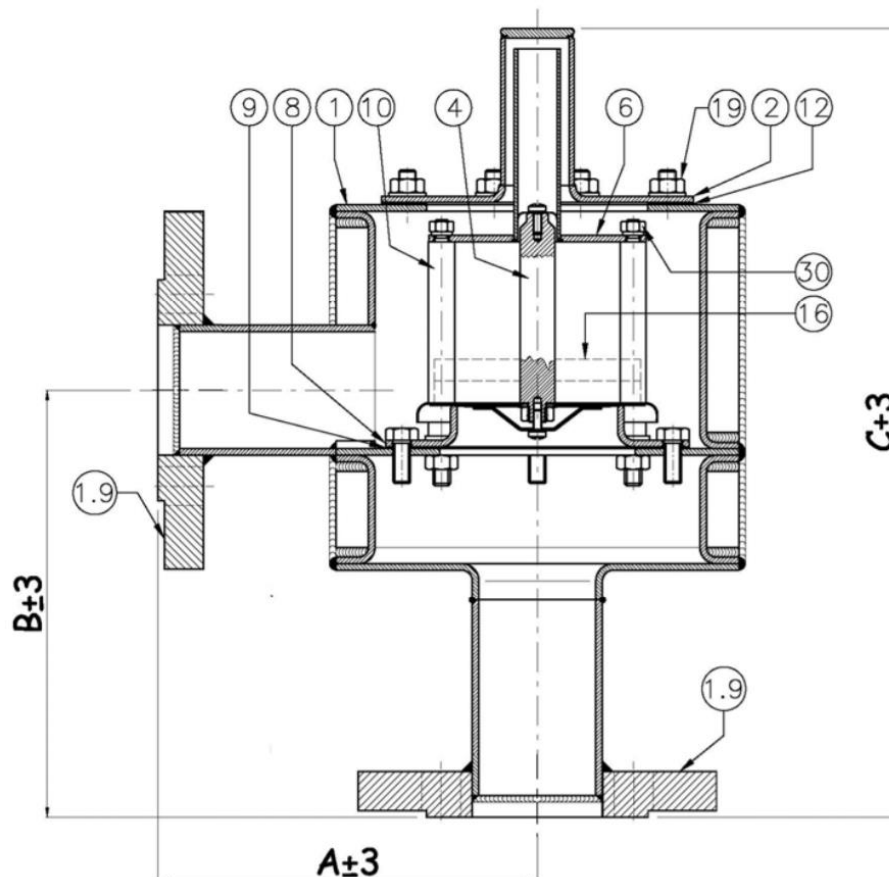
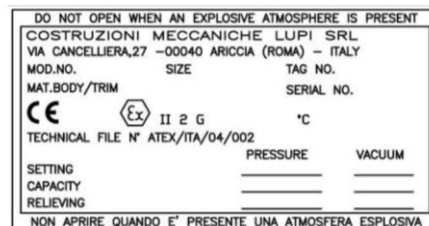
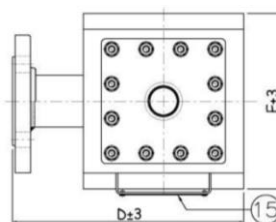
DO NOT OPEN WHEN AN EXPLOSIVE ATMOSPHERE IS PRESENT
COSTRUZIONI MECCANICHE LUPI SRL
VIA CANCELLIERA,27 -00040 ARICCIA (ROMA) - ITALY
MOD.NO. SIZE TAG NO.
MAT.BODY/TRIM SERIAL NO.
CE Ex II 2 G T=C
TECHNICAL FILE N° ATEX/ITA/04/002
SETTING CAPACITY RELIEVING PRESSURE VACUUM
NON APRIRE QUANDO E' PRESENTE UNA ATMOSFERA ESPLOSIVA



LISTA DE MATERIALES - PARTS LIS

N. NO.	DESCRIPCIÓN - DESCRIPTION	COD. IDENT. TYPE CODE	MATERIALES - MATERIALS	
			VF	WF
1	Cuerpo - Body Valve	492-01-00A	AISI 304	AISI 316L
1.9	Bridas - Flanges	454-01-09A	Acero al carbono zincado en caliente - Hot Dip Galv. Carb. Steel	AISI 316L
2	Tapa lado presión - Pressure Side Cover	492-02-00A	AISI 304	AISI 316L
3	Tapa lado vacío - Vacuum Side Cover	454-03-00A	AISI 304	AISI 316L
4	Clapeta de presión - Pressure Side Cap	454-04-00A	AISI 316 + P.T.F.E.+ F.E.P.	
5	Clapeta de vacío - Vacuum Side Cap	454-05-00A	AISI 316 + P.T.F.E.+ F.E.P.	
6	Cruceta de presión - Pressure Side Cross	454-06-00A	AISI 304	AISI 316
7	Cruceta de vacío - Vacuum Side Cross	454-07-00A	AISI 304	AISI 316
8	Asiento - Seat	454-08-00A	AISI 304	AISI 316
9	Junta del asiento - Seat Gasket	454-09-00A	Grafito expandido - Expanded Graphite	
10	Guía clapeta de presión - Pressure Side Cap Guide	454-10-00A	AISI 304	AISI 316
11	Guias clapeta de vacío - Vacuum Side Cap Guide	454-11-00A	AISI 304	AISI 316
12	Junta Tapa de Vacío - Vacuum Cover Gasket	454-12-00A	Grafito expandido - Expanded Graphite	
15	Chapa - Nameplate	454-15-00A	AISI 304	AISI 316
16	Contrapesos - Loading Weight		Plomo - Lead	Plomo - Lead / AISI 316
19	Tuerca M8 - M8 Nut		AISI 304	AISI 316
20	Tuerca - Nut M6: 2" - 3" - 4" --- M8: 6" - 8" - 10" - 12"		AISI 304	AISI 316
30	Tuerca - Nut M6: 2" --- M8: 3" - 4" --- M10: 6" - 8" - 10" - 12"		AISI 304	AISI 316
31	Codo embridado - Flanged elbow	464-13-00A	AISI 304	AISI 316L

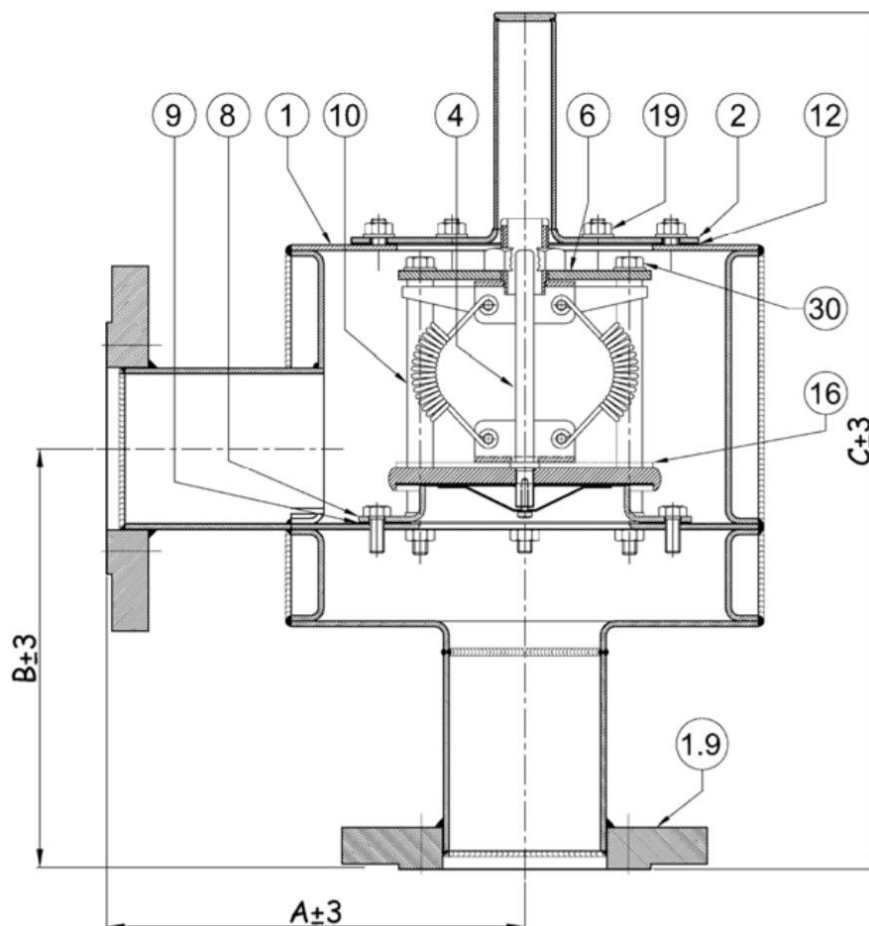
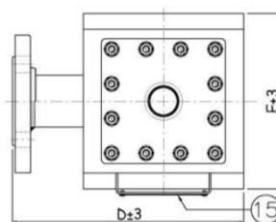
TAMAÑO SIZE	A	B	C	D	E
DN	mm	mm	mm	mm	mm
2"	175	197	365	271	208
3"	229	231	470	360	248
4"	229	243	470	360	248
6"	332	308	625	557	396
8"	332	334	625	557	396
10"	457	476	915	767	448
12"	457	502	915	767	448



LISTA DE MATERIALES - PARTS LIST

N. NO.	DESCRIZIONE - DESCRIPTION	COD. IDENT. TYPE CODE	MATERIALES - MATERIALS	
			VF	WF
1	Cuerpo - Body Valve	493-01-00A	AISI 304	AISI 316L
1.9	Brida - Flange	454-01-09A	Acero al carbono zincado en caliente - Hot Dip Galv. Carb. Steel	AISI 316L
2	Tapa de presión - Pressure Side Cover	454-02-00A	AISI 304	AISI 316L
4	Clapeta de presión - Pressure Side Cap	454-04-00A	AISI 316 + P.T.F.E.+ F.E.P.	
6	Cruceta de presión - Pressure Side Cross	454-06-00A	AISI 304	AISI 316
8	Asiento - Seat	454-08-00A	AISI 304	AISI 316
9	Junta de asiento - Seat Gasket	454-09-00A	Grafito Expandido - Expanded Graphite	
10	Guía clapeta presión - Pressure Side Cap	454-10-00A	AISI 304	AISI 316
12	Junta lado presión - Pressure Cover Gasket	454-12-00A	Grafito Expandido - Expanded Graphite	
15	Chapa - Nameplate	454-15-00A	AISI 304	AISI 316
16	Contrapesos - Loading Weight		Plomo - Lead	Plomo - Lead /AISI 316L
19	Tuerca - M8 Nut		AISI 304	AISI 316
30	Tuerca - Nut M6: 2" --- M8: 3" - 4" --- M10: 6" - 8" - 10" - 12"		AISI 304	AISI 316

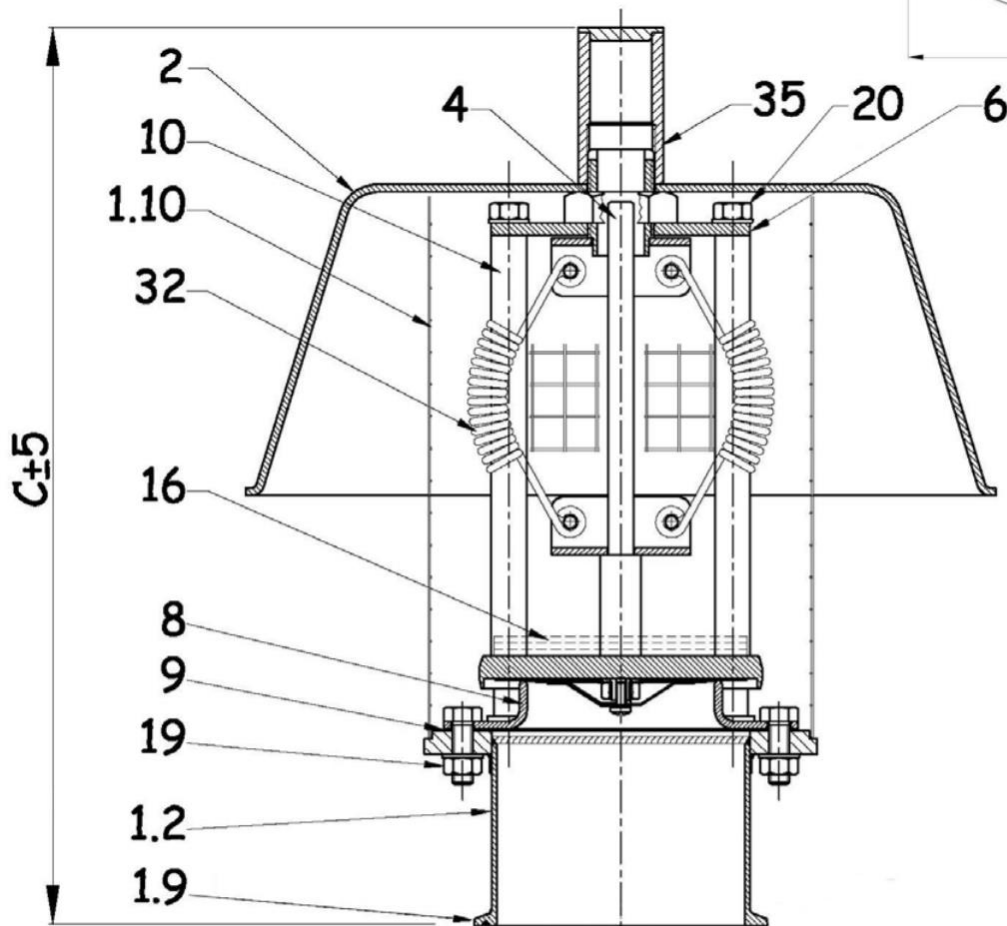
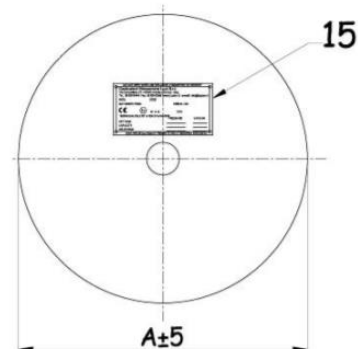
TAMAÑO SIZE	A	B	C	D	E
DN	mm	mm	mm	mm	mm
2"	175	197	365	271	208
3"	229	231	470	360	248
4"	229	243	470	360	248
6"	332	308	625	557	396
8"	332	334	625	557	396
10"	457	476	915	767	448
12"	457	502	915	767	448



LISTA DE MATERIALES - PARTS LIST

N. NO.	DESCRIZIONE - DESCRIPTION	COD. IDENT. TYPE CODE	MATERIALES - MATERIALS	
			VF	WF
1	Cuerpo - Body Valve	493-01-00A	AISI 304	AISI 316L
1.9	Brida - Flange	454-01-09A	Acero al carbono zincado en caliente - Hot Dip Galv. Carb. Steel	AISI 316L
2	Tapa de presión - Pressure Side Cover	454-02-00A	AISI 304	AISI 316L
4	Clapeta de presión - Pressure Side Cap	454-04-00A	AISI 316 + P.T.F.E.+ F.E.P.	
6	Cruceta de presión - Pressure Side Cross	454-06-00A	AISI 304	AISI 316
8	Asiento - Seat	454-08-00A	AISI 304	AISI 316
9	Junta de asiento - Seat Gasket	454-09-00A	Grafito Expandido - Expanded Graphite	
10	Guía clapeta presión - Pressure Side Cap	454-10-00A	AISI 304	AISI 316
12	Junta lado presión - Pressure Cover Gasket	454-12-00A	Grafito Expandido - Expanded Graphite	
15	Chapa - Nameplate	454-15-00A	AISI 304	AISI 316
16	Contrapesos - Loading Weight		Plomo - Lead	Plomo - Lead /AISI 316L
19	Tuerca - M8 Nut		AISI 304	AISI 316
30	Tuerca - Nut M6: 2" --- M8: 3" - 4" --- M10: 6" - 8" - 10" - 12"		AISI 304	AISI 316
32	Muelle - Spring			AISI 316

TAMAÑO SIZE	A	C
DN	mm	mm
1.5" / 2"	224	394
3"	296	394
4"	296	364

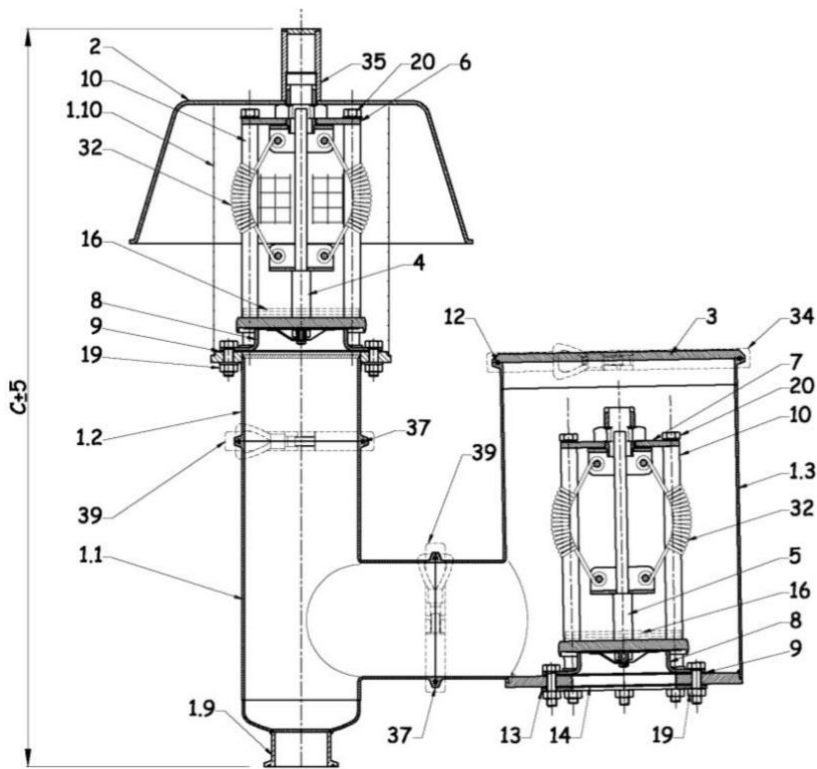
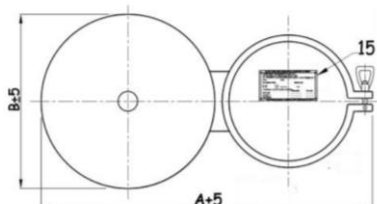


LISTA DE MATERIALES - PARTS LIST

N. NO.	DESCRIZIONE - DESCRIPTION	COD. IDENT. TYPE CODE	MATERIALES - MATERIALS
1.2	Cuerpo - Body Valve		AISI 316L
1.9	Clamp		AISI 316L
1.10	Malla de presión - Pressure Screen		ACERO INOXIDABLE - STAINLESS STEEL
2	Hood - Caperuza		AISI 316L
4	Clapeta de presión - Pressure Side Cap		AISI 316 + P.T.F.E.+ F.E.P.
6	Cruceta de presión - Pressure Side Cross		AISI 316
8	Asiento - Seat		AISI 316
9	Junta de asiento - Seat Gasket		VITON
10	Guía clapeta - Caps Guide		AISI 316
15	Chapa - Nameplate		AISI 316
16	Contrapesos - Loading Weight		PLOMO - LEAD /AISI 316L
19	Tuerca - M8 Nut		AISI 316
20	Tuerca - Nut M8: 2" - 3" - 4"		AISI 316
32	Muelle - Spring		AISI 316
35	Tapon - Plug		ACERO INOXIDABLE - STAINLESS STEEL

TAMAÑO SIZE	A	B	C
DN	mm	mm	mm
1.5" / 2"	529	224	635
3"	565	296	635
4"	565	296	612

DO NOT OPEN WHEN AN EXPLOSIVE ATMOSPHERE IS PRESENT
COSTRUZIONI MECCANICHE LUPI SRL
VIA CANCELLIERA,27 -00040 ARICCIA (ROMA) - ITALY
MOD.NO. SIZE TAG NO.
MAT.BODY/TRIM SERIAL NO.
CE Ex II 2 G T=C
TECHNICAL FILE N° ATEX/ITA/04/002
PRESSURE VACUUM
SETTING _____
CAPACITY _____
RELIEVING _____
NON APRIRE QUANDO E' PRESENTE UNA ATMOSFERA ESPLOSIVA

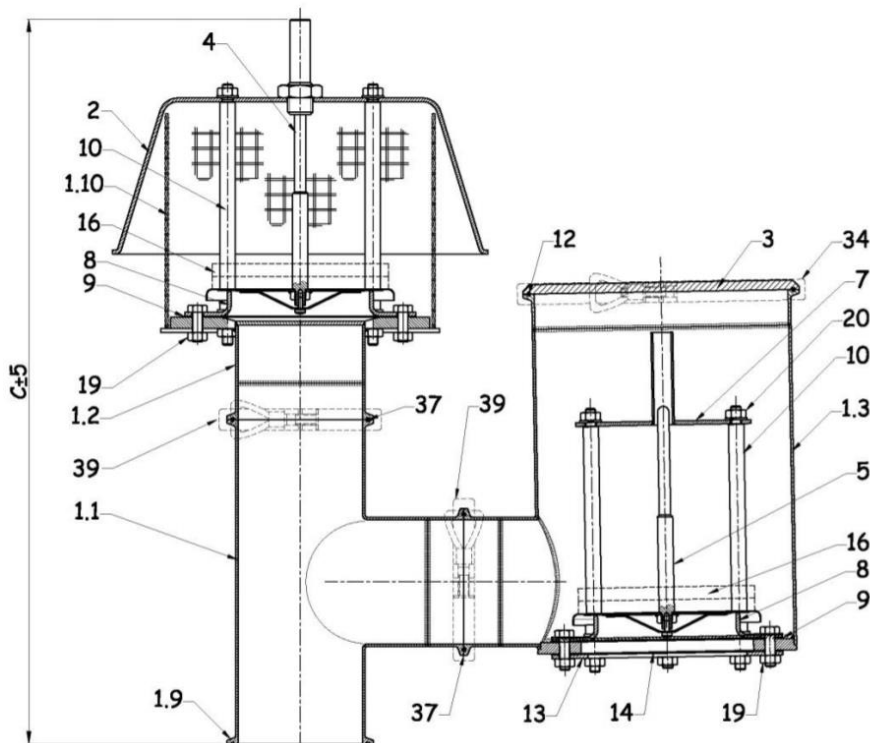
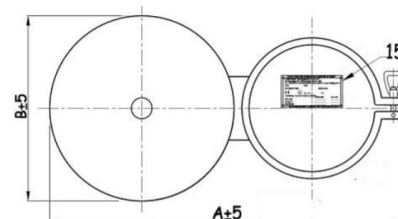


LISTA DE MATERIALES - PARTS LIST

N. NO.	DESCRIZIONE - DESCRIPTION	COD. IDENT. TYPE CODE	MATERIALES - MATERIALS
1.1/2/3	Cuerpo - Body Valve		AISI 316L
1.9	Clamp		AISI 316L
1.10	Malla de presión - Pressure Screen		ACERO INOXIDABLE - STAINLESS STEEL
2	Hood - Caperuza		AISI 316L
3	Tapa Tri-Clamp 8" - Cover Tri-Clamp 8"		AISI 316L
4	Clapeta de presión - Pressure Side Cap		AISI 316 + P.T.F.E.+ F.E.P.
5	Clapeta de vacío - Vacuum Side Cap		AISI 316 + P.T.F.E.+ F.E.P.
6	Cruceta de presión - Pressure Side Cross		AISI 316
7	Cruceta de vacío - Vacuum Side Cross		AISI 316
8	Asiento - Seat		AISI 316
9	Junta de asiento - Seat Gasket		VITON
10	Guia clapeta - Caps Guide		AISI 316
12	Junta Tri-Clamp 8" - Gasket Tri-Clamp 8"		P.T.F.E.
13	Reten de malla - Screen retainer		AISI 316
14	Malla de vacío - Vacuum Screen		ACERO INOXIDABLE - STAINLESS STEEL
15	Chapa - Nameplate		AISI 316
16	Contrapesos - Loading Weight		PLOMO - LEAD /AISI 316L
19	Tuerca - M8 Nut		AISI 316
20	Tuerca - Nut M8: 2" - 3" - 4"		AISI 316
32	Muelle - Spring		AISI 316
34	Clamp 8" - Abrazadera 8"		ACERO INOXIDABLE - STAINLESS STEEL
35	Tapon - Plug		ACERO INOXIDABLE - STAINLESS STEEL
37	Junta Tri-Clamp 4" - Gasket Tri-Clamp 4"		P.T.F.E.
39	Clamp 4" - Abrazadera 4"		ACERO INOXIDABLE - STAINLESS STEEL

TAMAÑO SIZE	A	B	C
DN	mm	mm	mm
1.5" / 2"	529	224	635
3"	565	296	635
4"	565	296	572

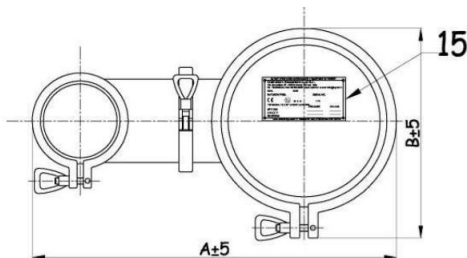
DO NOT OPEN WHEN AN EXPLOSIVE ATMOSPHERE IS PRESENT
 COSTRUZIONI MECCANICHE LUPI SRL
 VIA CANCELLIERA,27 -00040 ARICCIA (ROMA) - ITALY
 MOD.NO. SIZE TAG NO.
 MAT.BODY/TRIM SERIAL NO.
 CE II 2 G T=°C
 TECHNICAL FILE N° ATEX/ITA/04/002
 PRESSURE VACUUM
 SETTING _____
 CAPACITY _____
 RELIEVING _____
 NON APRIRE QUANDO E' PRESENTE UNA ATMOSFERA ESPLOSIVA



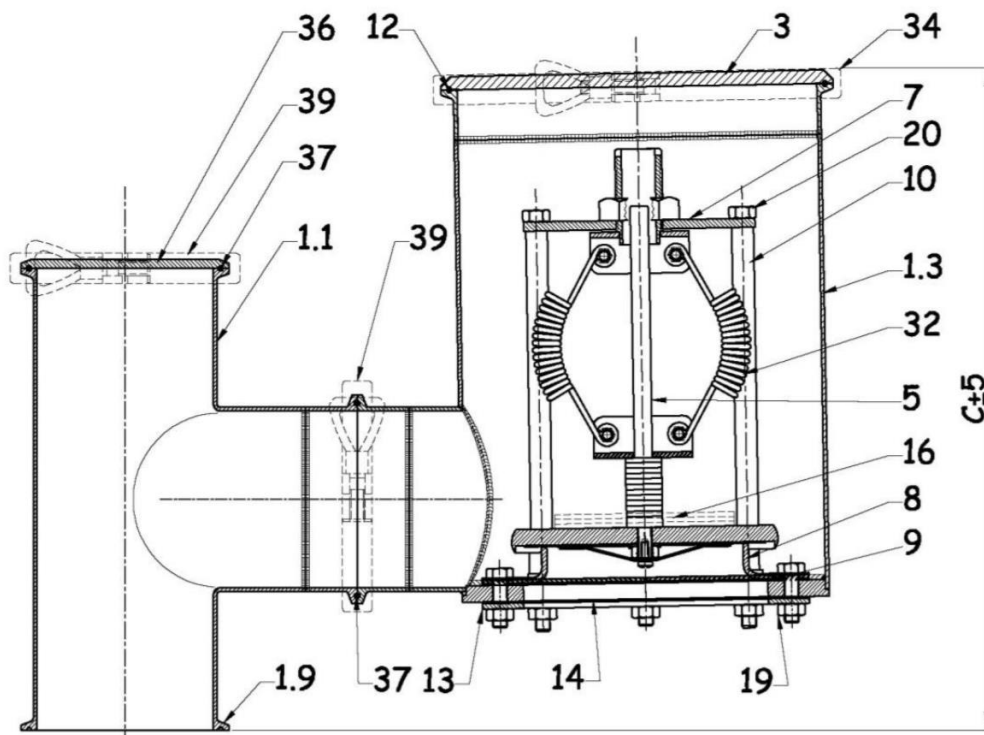
LISTA DE MATERIALES - PARTS LIST

N. NO.	DESCRIZIONE - DESCRIPTION	COD. IDENT. TYPE CODE	MATERIALES - MATERIALS
1.1/2/3	Cuerpo - Body Valve		AISI 316L
1.9	Clamp		AISI 316L
1.10	Malla de presión - Pressure Screen		ACERO INOXIDABLE - STAINLESS STEEL
2	Hood - Caperuza		AISI 316L
3	Tapa Tri-Clamp 8" - Cover Tri-Clamp 8"		AISI 316L
4	Clapeta de presión - Pressure Side Cap		AISI 316 + P.T.F.E. + F.E.P.
5	Clapeta de vacío - Vacuum Side Cap		AISI 316 + P.T.F.E. + F.E.P.
7	Cruceta de vacío - Vacuum Side Cross		AISI 316
8	Asiento - Seat		AISI 316
9	Junta de asiento - Seat Gasket		VITON
10	Guia clapeta - Caps Guide		AISI 316
12	Junta Tri-Clamp 8" - Gasket Tri-Clamp 8"		P.T.F.E.
13	Reten de malla - Screen retainer		AISI 316
14	Malla de vacío - Vacuum Screen		ACERO INOXIDABLE - STAINLESS STEEL
15	Chapa - Nameplate		AISI 316
16	Contrapesos - Loading Weight		PLOMO - LEAD / AISI 316L
20	Tuerca - Nut M8		AISI 316
34	Clamp 8" - Abrazadera 8"		ACERO INOXIDABLE - STAINLESS STEEL
37	Junta Tri-Clamp 4" - Gasket Tri-Clamp 4"		P.T.F.E.
39	Clamp 4" - Abrazadera 4"		ACERO INOXIDABLE - STAINLESS STEEL

TAMAÑO SIZE	A	B	C
DN	mm	mm	mm
1.5" / 2"	462	227	388
3"	462	227	388
4"	462	227	367



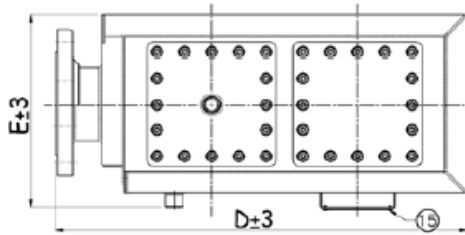
DO NOT OPEN WHEN AN EXPLOSIVE ATMOSPHERE IS PRESENT
 COSTRUZIONI MECCANICHE LUPI SRL
 VIA CANCELLIERA,27 -00040 ARICCIA (ROMA) - ITALY
 MOD.NO. SIZE TAG NO.
 MAT.BODY/TRIM SERIAL NO.
 CE Ex II 2 G T=°C
 TECHNICAL FILE N° ATEX/ITA/04/002
 SETTING PRESSURE VACUUM
 CAPACITY _____
 RELIEVING _____
 NON APRIRE QUANDO E' PRESENTE UNA ATMOSFERA ESPLOSIVA



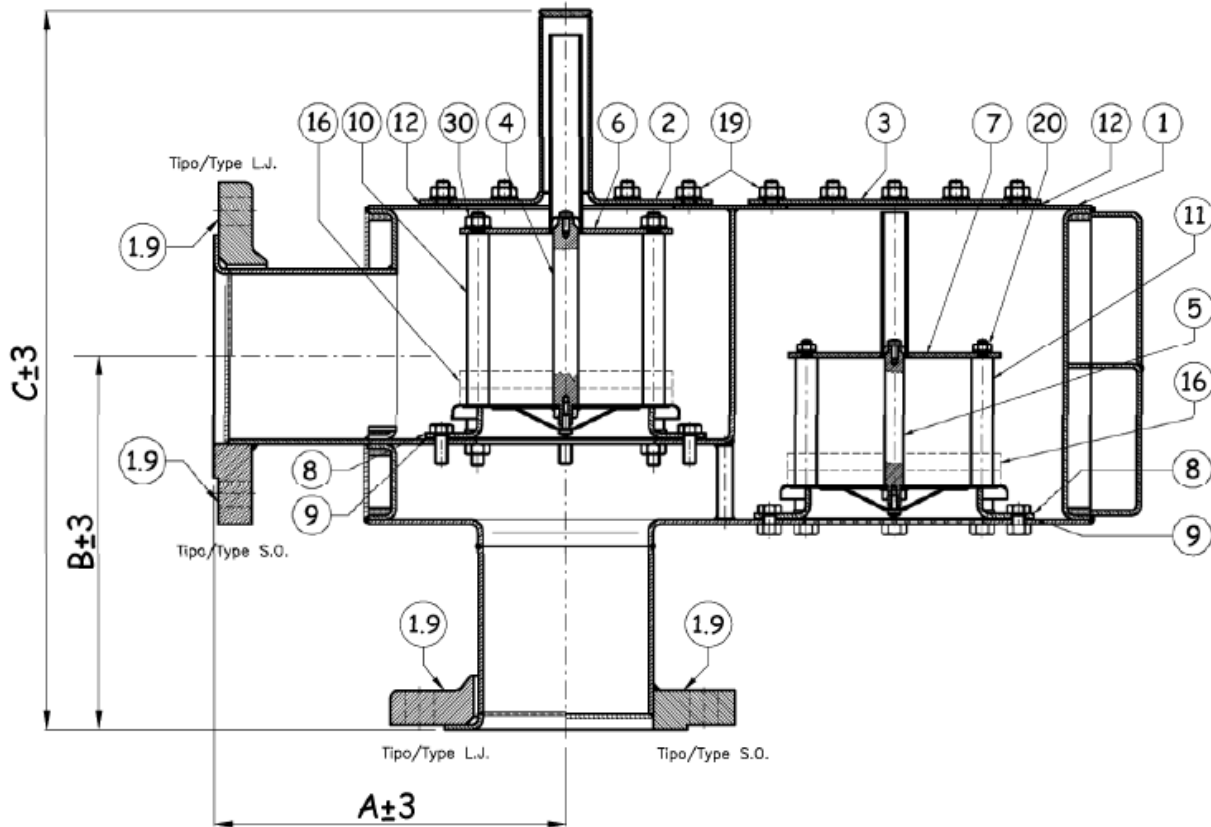
LISTA DE MATERIALES - PARTS LIST

N. NO.	DESCRIZIONE - DESCRIPTION	COD. IDENT. TYPE CODE	MATERIALES - MATERIALS
1.1/3	Cuerpo - Body Valve		AISI 316L
1.9	Clamp		AISI 316L
3	Tapa Tri-Clamp 8" - Cover Tri-Clamp 8"		AISI 316L
5	Clapeta de vacío - Vacuum Side Cap		AISI 316 + P.T.F.E.+ F.E.P.
7	Cruceta de vacío - Vacuum Side Cross		AISI 316
8	Asiento - Seat		AISI 316
9	Junta de asiento - Seat Gasket		VITON
10	Guia clapeta- Caps Guide		AISI 316
12	Junta Tri-Clamp 8" - Gasket Tri-Clamp 8"		P.T.F.E.
13	Reten de malla - Screen retainer		AISI 316
14	Malla de vacío - Vacuum Screen		ACERO INOXIDABLE - STAINLESS STEEL
15	Chapa - Nameplate		AISI 316
16	Contrapesos - Loading Weight		PLOMO - LEAD / AISI 316L
19	Tuerca - M8 Nut		AISI 316
20	Tuerca - Nut M8: 2" - 3" - 4"		AISI 316
32	Muelle - Spring		AISI 316
34	Clamp 8" - Abrazadera 8"		ACERO INOXIDABLE - STAINLESS STEEL
36	Tapa Tri-Clamp 4" - Cover Tri-Clamp 4"		AISI 316
37	Junta Tri-Clamp 4" - Gasket Tri-Clamp 4"		P.T.F.E.
39	Clamp 4" - Abrazadera 4"		ACERO INOXIDABLE - STAINLESS STEEL

TAMAÑO SIZE	A	B	C	D	E
DN	mm	mm	mm	mm	mm
4"	229	243	470	574	248



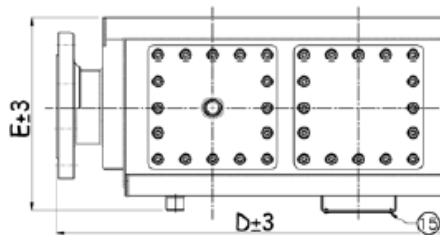
DO NOT OPEN WHEN AN EXPLOSIVE ATMOSPHERE IS PRESENT
COSTRUZIONI MECCANICHE LUPI SRL
VIA CANCELLIERA,27 -00040 ARICCIA (ROMA) - ITALY
MOD.NO. SIZE TAG NO.
MAT.BODY/TRIM SERIAL NO.
CE II 2 G 2R T-190°C
TECHNICAL FILE N° ATEX/ITA/04/002
SETTING PRESSURE VACUUM
CAPACITY
HELIX/INU
NON APRIRE QUANDO E' PRESENTE UNA ATMOSFERA ESPLOSIVA



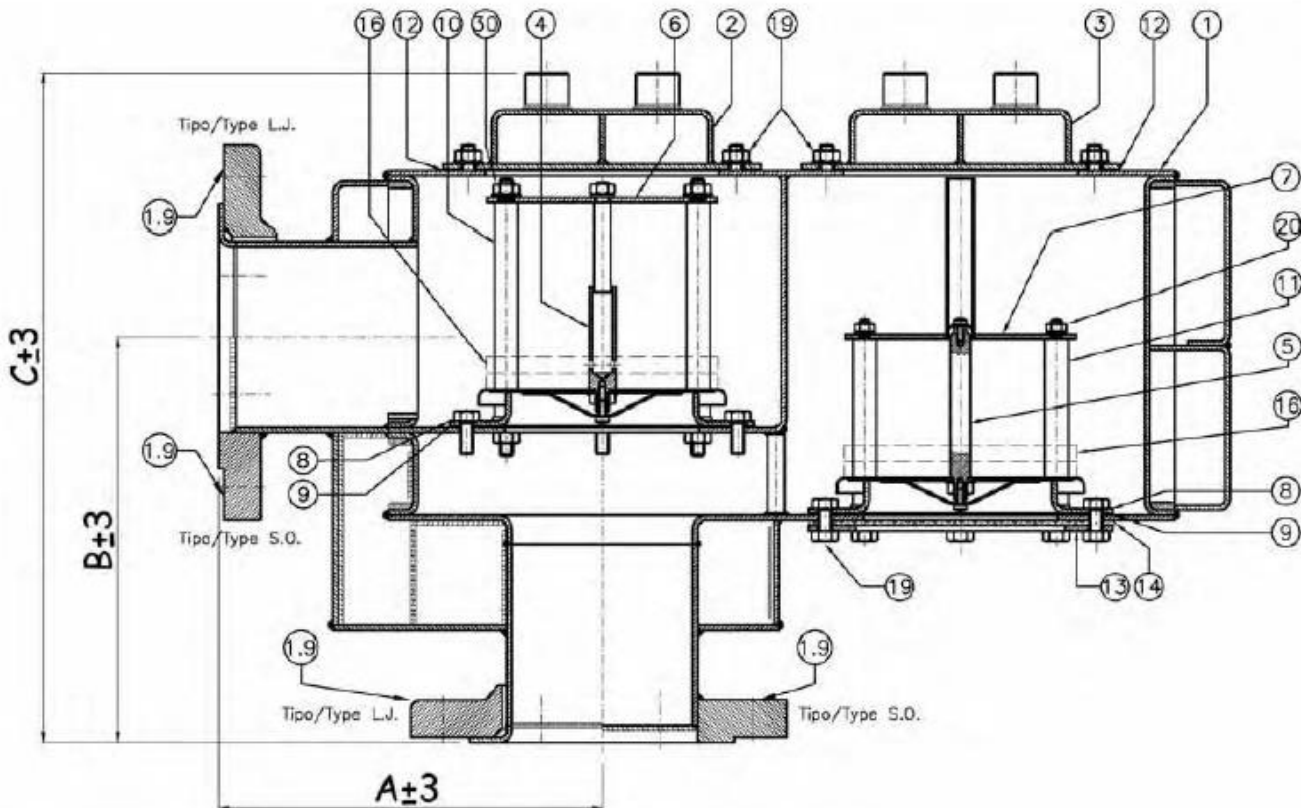
LISTA COMPONENTES - PARTS LIST

N. NO.	DESCRIPCIÓN - DESCRIPTION	COD. IDENT. TYPE CODE	MATERIAL - MATERIALS
1	Cuerpo - Body Valve	492-01-00A	AISI 316L
1.9	Brida - Flange	454-01-09A	AISI 304L
2	Tapa de presión - Pressure Side Cover	492-02-00A	AISI 316L
3	Tapa de vacío - Vacuum Side Cover	454-03-00A	AISI 316L
4	Clapeta de presión - Pressure Side Cap	454-04-00A	AISI 316 + P.T.F.E.+ F.E.P.
5	Clapeta de vacío - Vacuum Side Cap	454-05-00A	AISI 316 + P.T.F.E.+ F.E.P.
6	Cruceta de presión - Pressure Side Cross	454-06-00A	AISI 316
7	Cruceta de vacío - Vacuum Side Cross	454-07-00A	AISI 316
8	Asiento - Seat	454-08-00A	AISI 316
9	Junta de asiento - Seat Gasket	454-09-00A	Grafito expandido - Expanded Graphite
10	Guía de presión - Pressure Side Cap Guide	454-10-00A	AISI 316
11	Guía de vacío - Vacuum Side Cap Guide	454-11-00A	AISI 316
12	Junta de la tapa - Vacuum Cover Gasket	454-12-00A	Grafito expandido - Expanded Graphite
15	Chapa - Nameplate	454-15-00A	AISI 316
16	Contrapesos - Loading Weight		AISI 304
19	Tuerca M8 - M8 Nut		AISI 316
20	Tuerca - Nut M6: 2" - 3" - 4" --- M8: 6" - 8" - 10" - 12"		AISI 316
30	Tuerca - Nut M6: 2" --- M8: 3" - 4" --- M10: 6" - 8" - 10" - 12"		AISI 316

TAMAÑO SIZE	A	B	C	D	E
DN	mm	mm	mm	mm	mm
4"	229	243	401	604	294

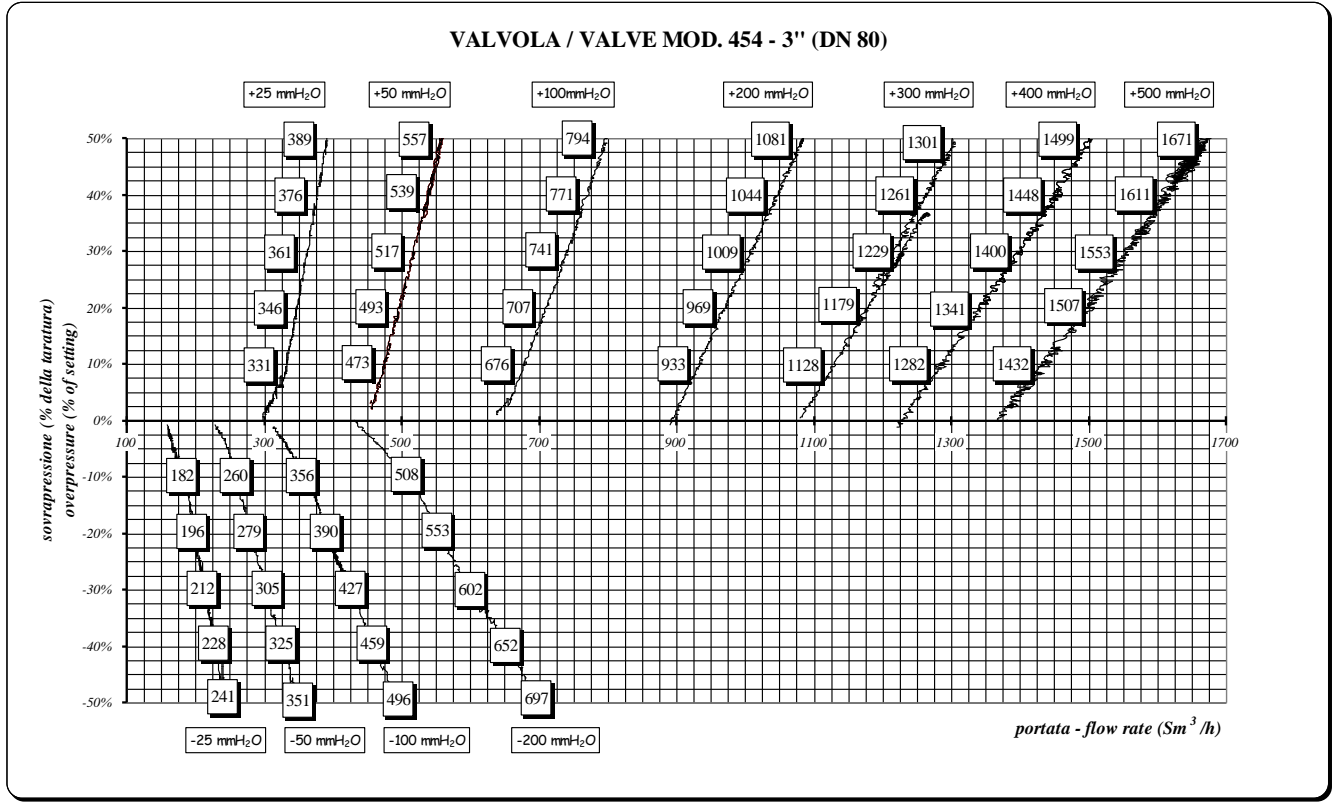
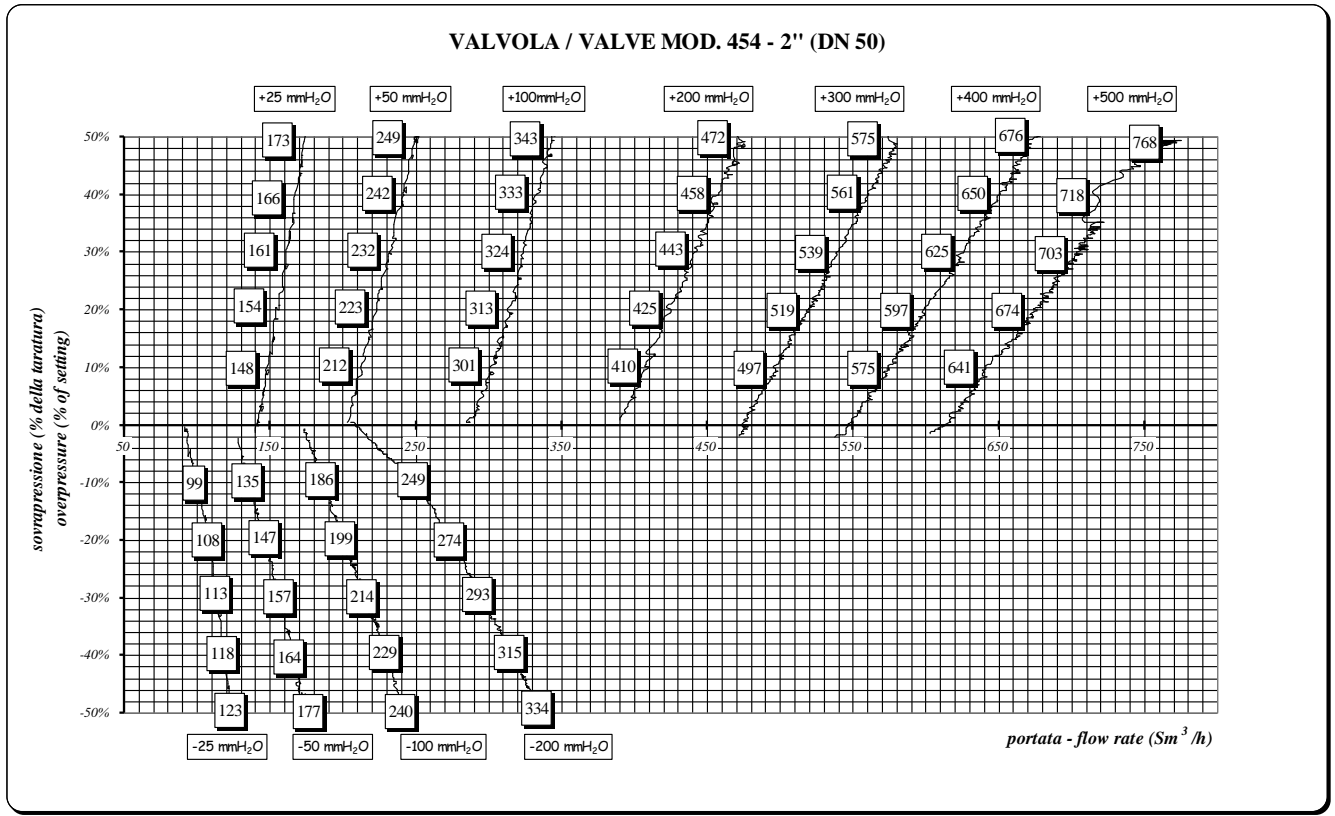


DO NOT OPEN WHEN AN EXPLOSIVE ATMOSPHERE IS PRESENT
 COSTRUZIONI MECCANICHE LUPI SRL
 VIA CANCELLIERA,27 -00040 ARICCIA (ROMA) - ITALY
 MOD.NO. SIZE TAG NO.
 MAT.BODY/TRIM SERIAL NO.
CE II 2 G 2P T-190°C
 TECHNICAL FILE N° ATEX/ITA/04/002
 SETTING PRESSURE VACUUM
 CAPACITY
 HELIUM
 NON APRIRE QUANDO E' PRESENTE UNA ATMOSFERA ESPLOSIVA



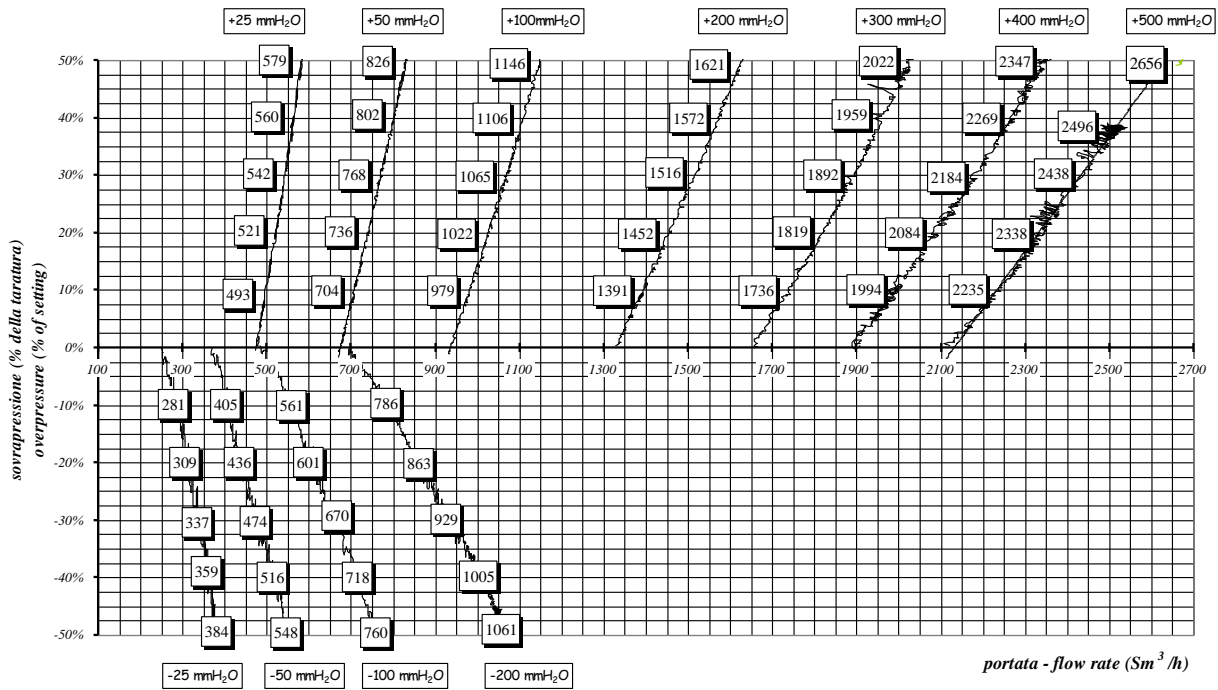
LISTA COMPONENTES - PARTS LIST

N. NO.	DESCRIPCIÓN - DESCRIPTION	COD. IDENT. TYPE CODE	MATERIAL - MATERIALS
1	Cuerpo - Body Valve	492-01-00A	AISI 316L
1.9	Brida - Flange	454-01-09A	AISI 304L
2	Tapa de presión - Pressure Side Cover	492-02-00A	AISI 316L
3	Tapa de vacío - Vacuum Side Cover	454-03-00A	AISI 316L
4	Clapeta de presión - Pressure Side Cap	454-04-00A	AISI 316 + P.T.F.E.+ F.E.P.
5	Clapeta de vacío - Vacuum Side Cap	454-05-00A	AISI 316 + P.T.F.E.+ F.E.P.
6	Cruceta de presión - Pressure Side Cross	454-06-00A	AISI 316
7	Cruceta de vacío - Vacuum Side Cross	454-07-00A	AISI 316
8	Asiento - Seat	454-08-00A	AISI 316
9	Junta de asiento - Seat Gasket	454-09-00A	Grafito expandido - Expanded Graphite
10	Guía de presión - Pressure Side Cap Guide	454-10-00A	AISI 316
11	Guía de vacío - Vacuum Side Cap Guide	454-11-00A	AISI 316
12	Junta de la tapa - Vacuum Cover Gasket	454-12-00A	Grafito expandido - Expanded Graphite
13	Reten de malla - Screen retainer	454-13-00A	AISI 316
14	Malla de vacío - Vacuum Screen	454-14-00A	AISI 316L
15	Chapa - Nameplate	454-15-00A	AISI 316
16	Contrapesos - Loading Weight		AISI 304
19	Tuerca M8 - M8 Nut		AISI 316
20	Tuerca - Nut M6: 2" - 3" - 4" --- M8: 6" - 8" - 10" - 12"		AISI 316
30	Tuerca - Nut M6: 2" --- M8: 3" - 4" --- M10: 6" - 8" - 10" - 12"		AISI 316

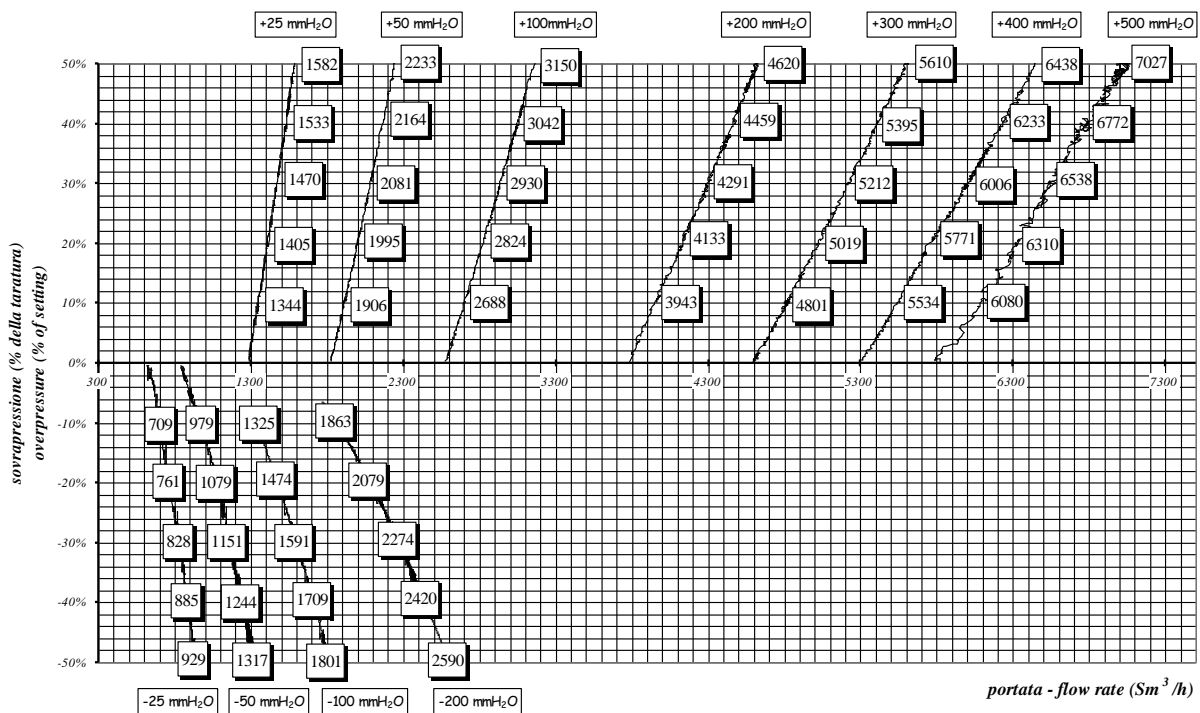


NOTA: Las curvas de vacío son las mismas para los modelos 456 y 3456.
 NOTE: vacuum flow rates values are the same for models 456 and 3456.

VALVOLA / VALVE MOD. 454 - 4" (DN 100)



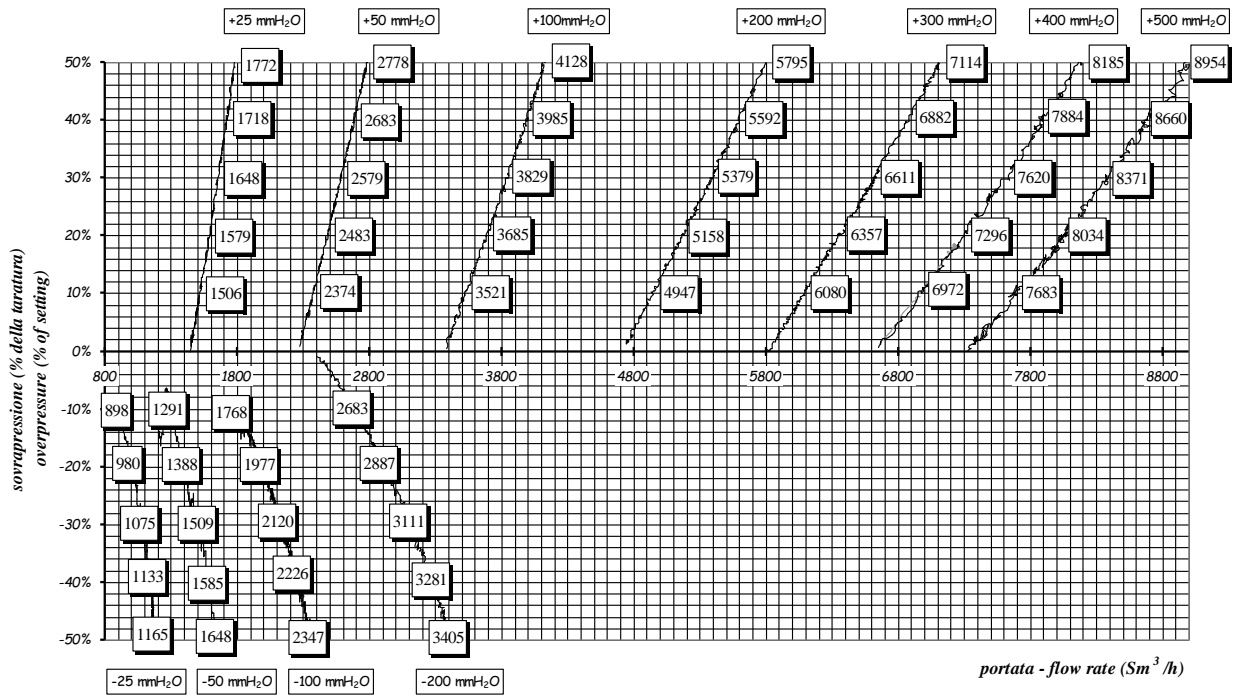
VALVOLA MOD. 454 - 6" (DN 150)



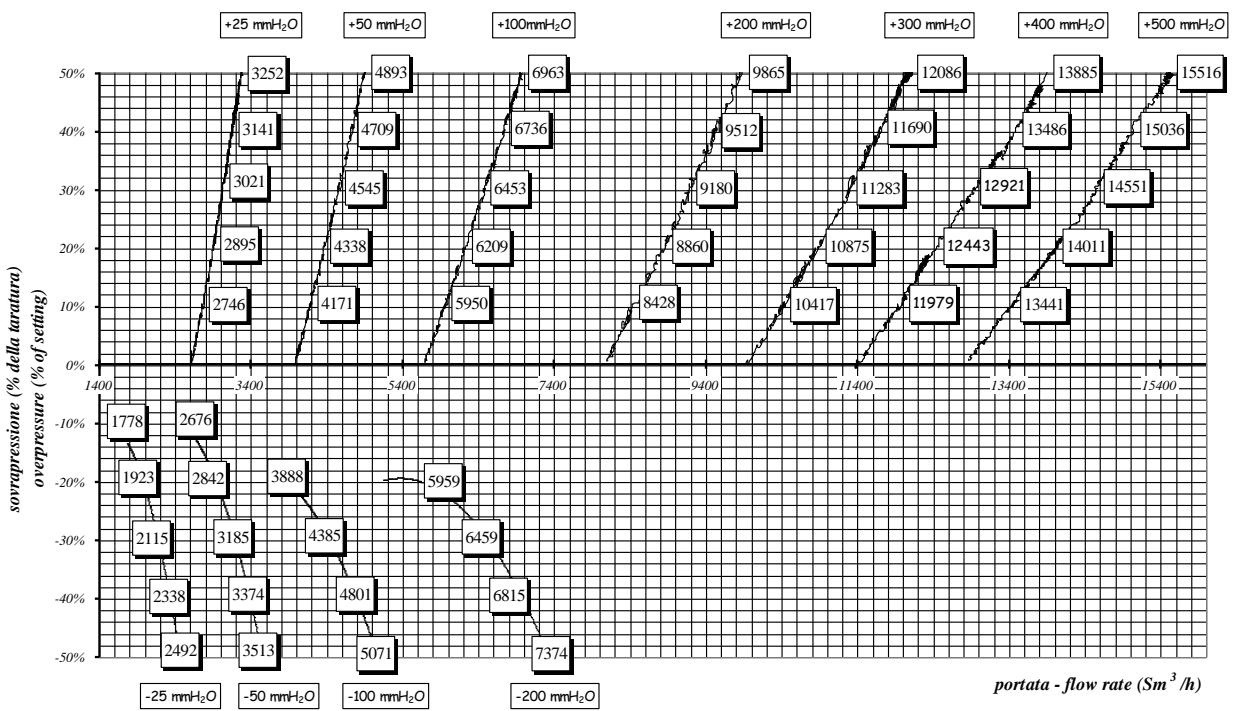
NOTA: Las curvas de vacío son las mismas para los modelos 456 y 3456.

NOTE: vacuum flow rates values are the same for models 456 and 3456.

VALVOLA / VALVE MOD. 454 - 8" (DN 200)



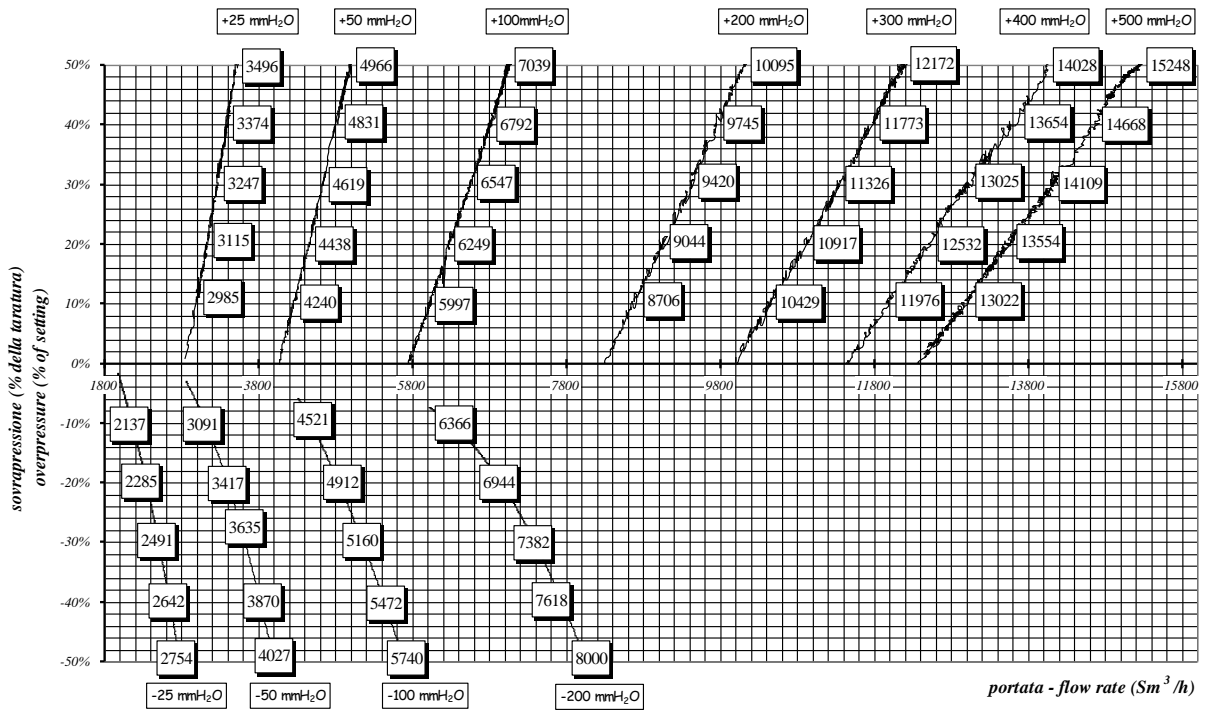
VALVOLA / VALVE MOD. 454 - 10" (DN 250)



NOTA: Las curvas de vacío son las mismas para los modelos 456 y 3456.

NOTE: vacuum flow rates values are the same for models 456 and 3456.

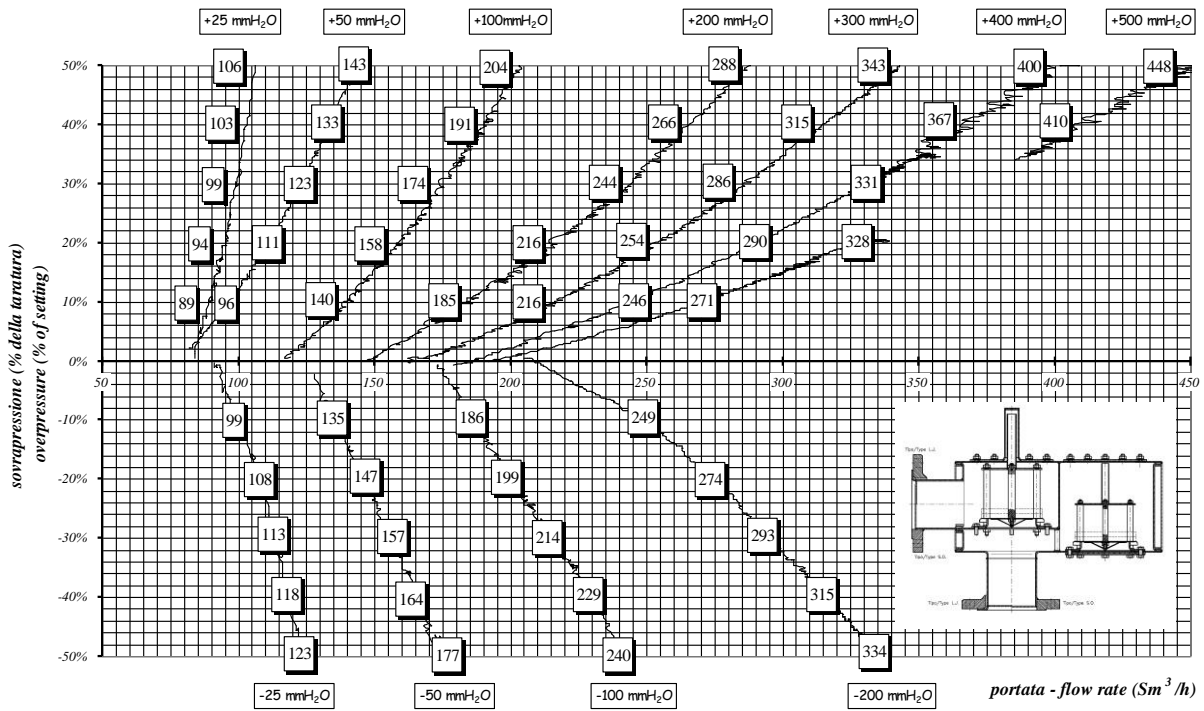
VALVOLA / VALVE MOD. 454 - 12" (DN 300)



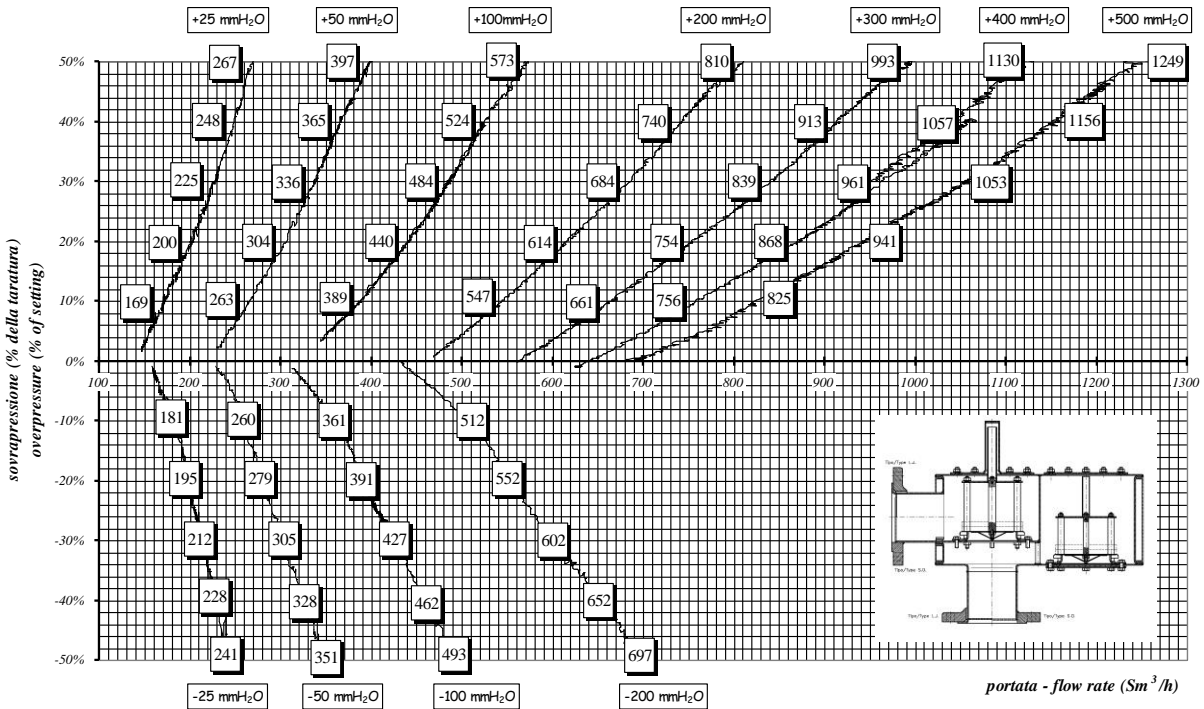
NOTA: Las curvas de vacío son las mismas para los modelos 456 y 3456.

NOTE: vacuum flow rates values are the same for models 456 and 3456.

VALVOLA / VALVE MOD. 492 - 2" (DN 50)



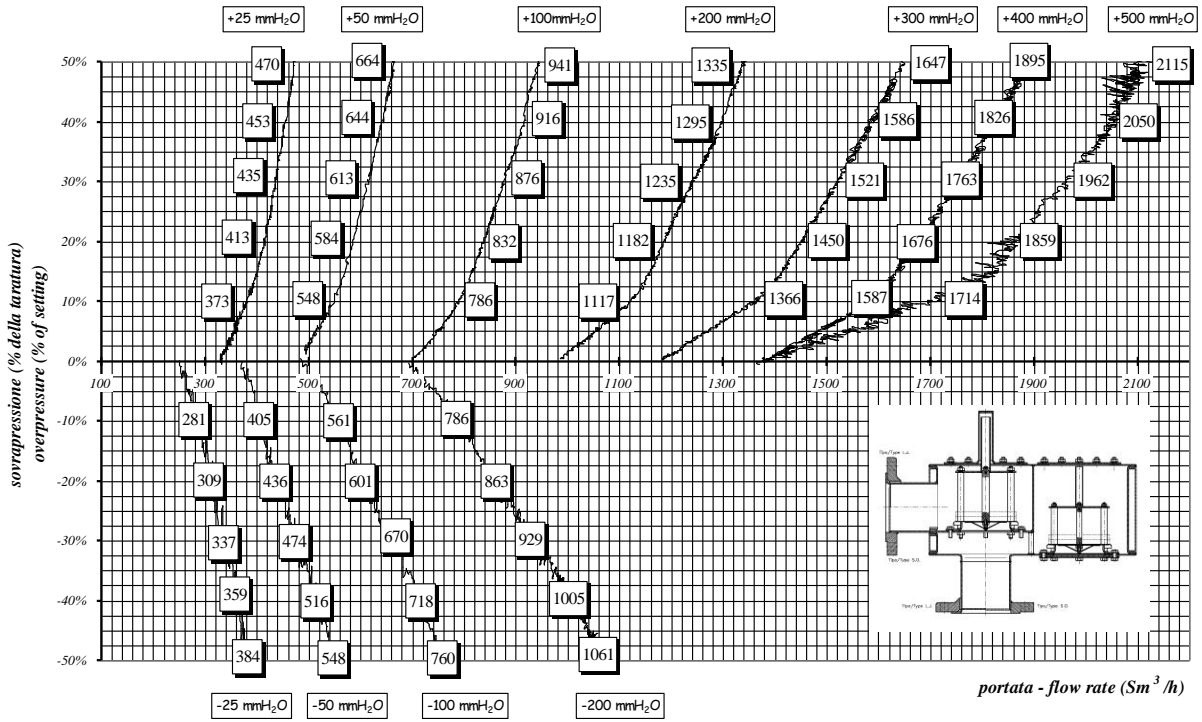
VALVOLA / VALVE MOD. 492 - 3" (DN 80)



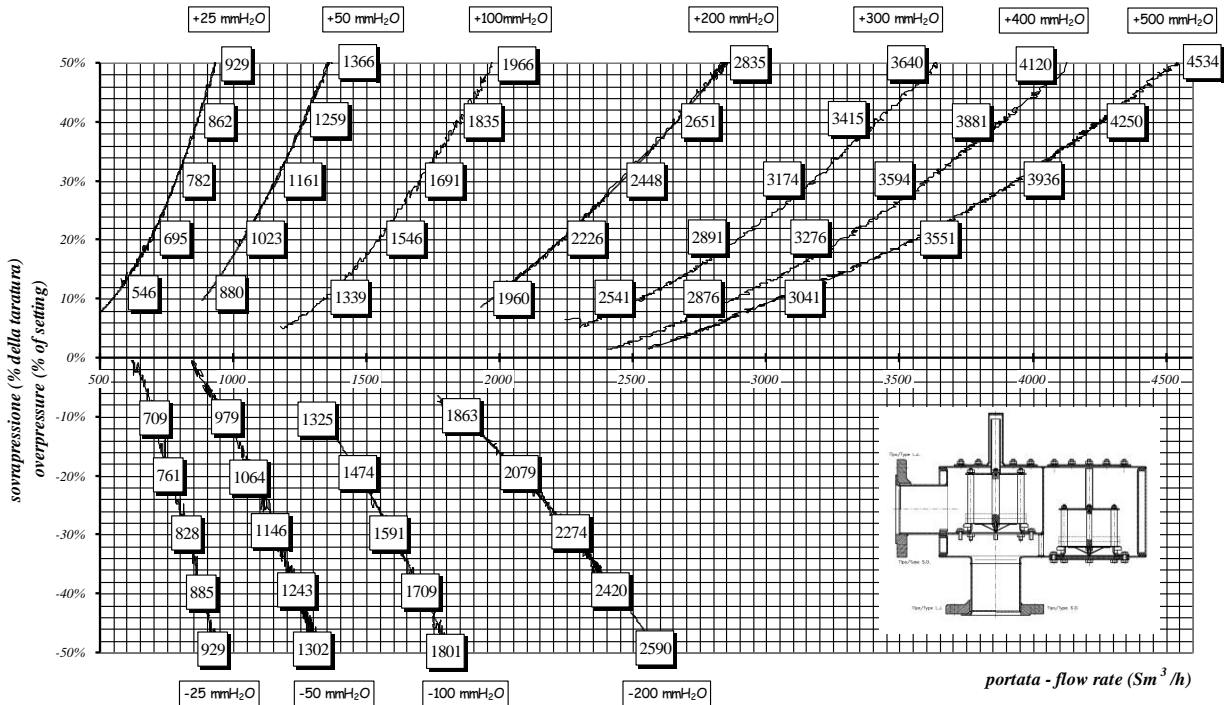
NOTA: Los valores de caudal positivo son válidos para algunos modelos, 493, 464, 3492, 3493 y 3464.

NOTE: positive overpressure flow rates values are the same for models 493, 464, 3492, 3493 e 3464.

VALVOLA / VALVE MOD. 492 - 4" (DN 100)



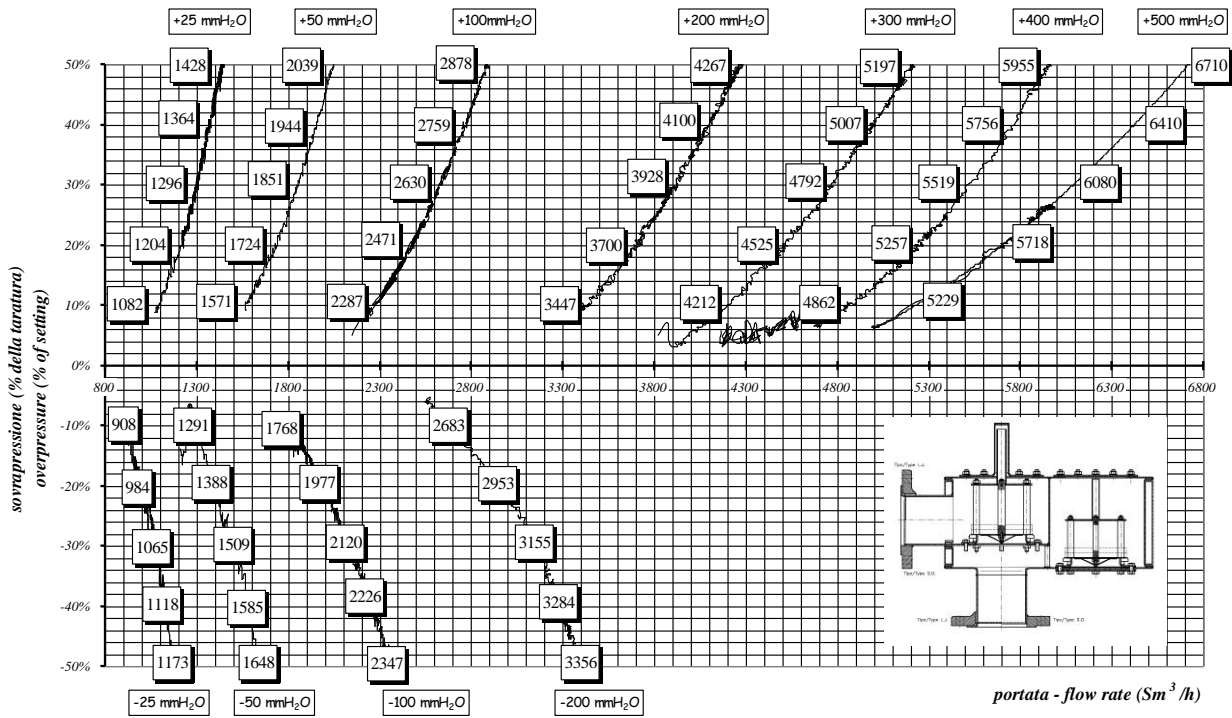
VALVOLA / VALVE MOD. 492 - 6" (DN 150)



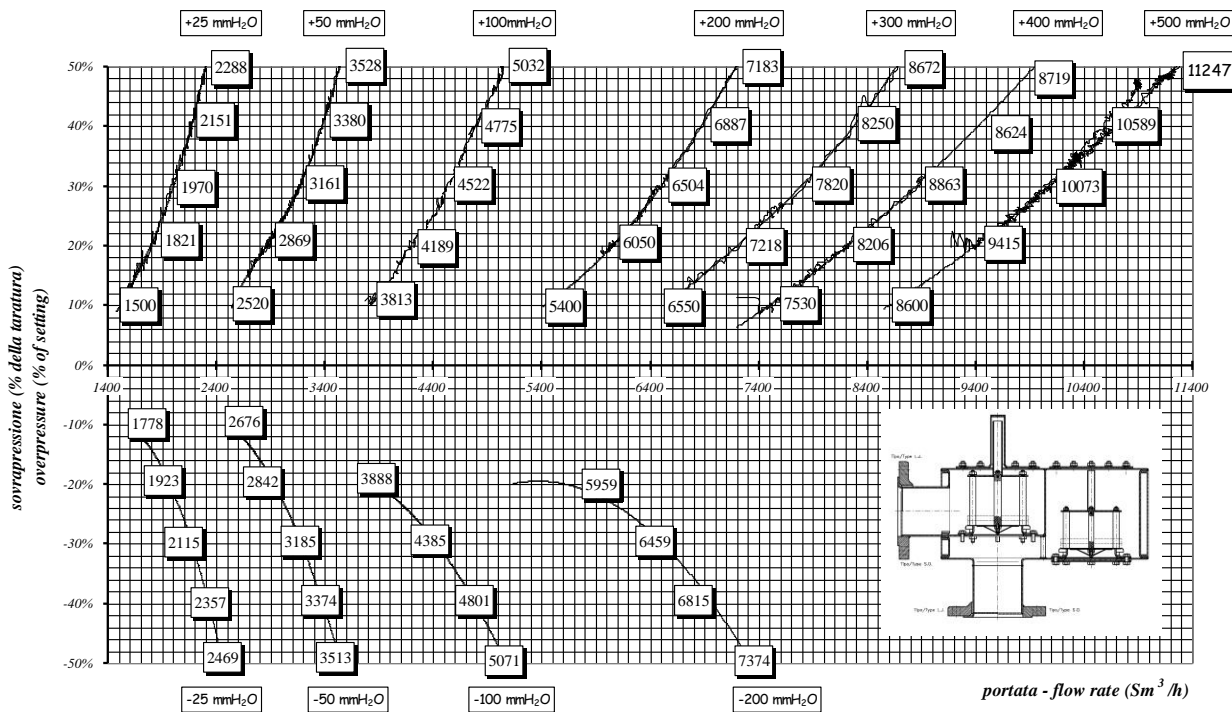
NOTA: Los valores de caudal positivo son válidos para algunos modelos, 493, 464, 3492, 3493 y 3464.

NOTE: positive overpressure flow rates values are the same for models 493, 464, 3492, 3493 e 3464.

VALVOLA / VALVE MOD. 492 - 8" (DN 200)



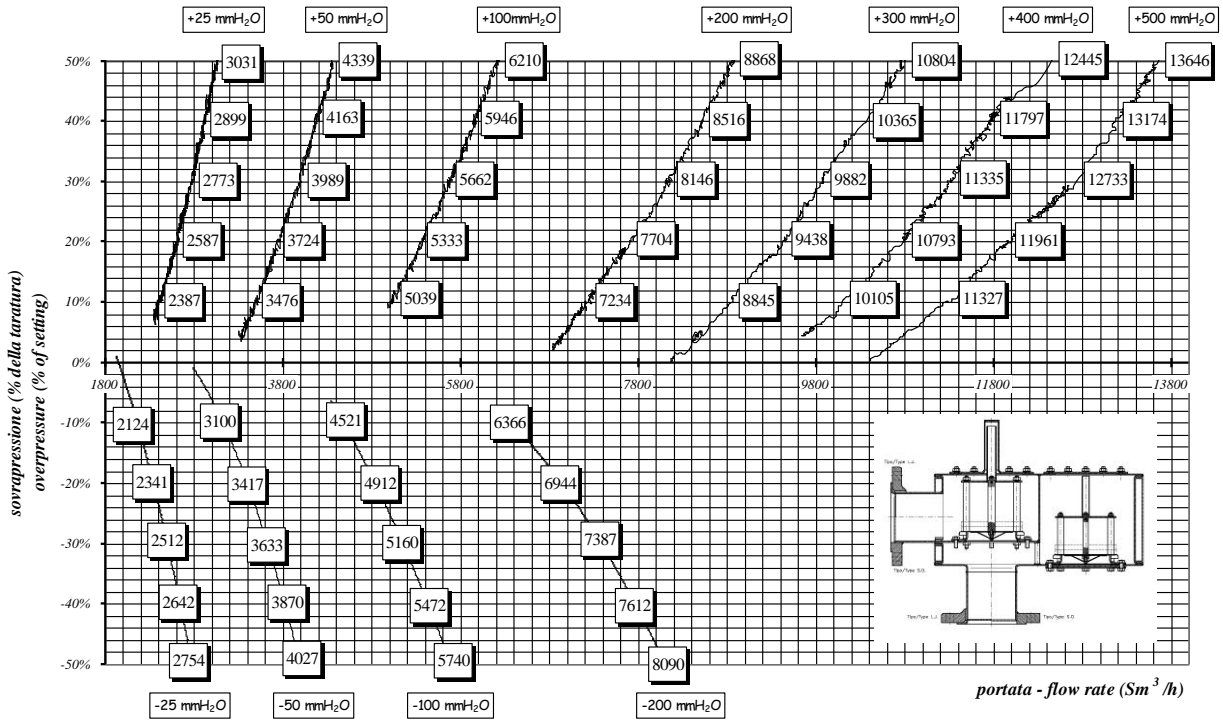
VALVOLA / VALVE MOD. 492 - 10" (DN 250)



NOTA: Los valores de caudal positivo son válidos para algunos modelos, 493, 464, 3492, 3493 y 3464.

NOTE: positive overpressure flow rates values are the same for models 493, 464, 3492, 3493 e 3464.

VALVOLA / VALVE MOD. 492 - 12" (DN 300)



NOTA: Los valores de caudal positivo son válidos para algunos modelos, 493, 464, 3492, 3493 y 3464.

NOTE: positive overpressure flow rates values are the same for models 493, 464, 3492, 3493 e 3464.